

**Lyell Road, Parkstone
Poole, Dorset, BH12 2NE**



HEARNES
WHERE SERVICE COUNTS

Lyell Road, Parkstone, Poole, Dorset, BH12 2NE

Freehold Price Offers over £325,000

A most attractive and beautifully presented character 3 double bedroom, 2 reception room home set on a quiet cul-de-sac of similar aged and styled properties. This home has been lovingly restored by the current owners and is warm and welcoming. The main sitting room, with French doors out to the garden, has a wonderful log burner with a log store on the adjacent patio. The bright dining room leads to a modern kitchen with a range of high gloss cream units and integrated hob, oven, extractor hood and dishwasher. Upstairs has 3 double bedrooms, en-suite shower room, luxury bathroom and a large landing space with room for a small study area. Outside is a well maintained and fully enclosed garden with a patio and tiered lawn with a portable hot tub (included) To the rear is a garage (currently used as a gym) and an off road parking space that can be approached from a service road behind.

- Beautifully presented 3 double bedroom detached character home
- Main sitting room with feature log burner, doors to the garden, and newly carpeted
- Lovely dining room with log burner leading to a modern kitchen fitted in high gloss units with integrated appliances including a Bosch induction hob
- Welcoming entrance hall with inset spot lighting and wood effect flooring
- Luxury, fully tiled, en-suite shower room to the master bedroom and further family bathroom
- Landing with space for a small study area
- Stylish modern internal décor with a warm and inviting feel
- Fully enclosed garden with patio and lawned area
- Garage to the rear (presently used as a gym) and an off road parking space approached via a service road
- On street parking to the front
- Set within a mile of the local Parkstone shops

Lyell Road is a cul-de-sac off Churchill Road in Parkstone. It is conveniently positioned within a mile of Ashley Road with its array of local shops and amenities and approximately 3 miles from Poole and Bournemouth Town Centres.

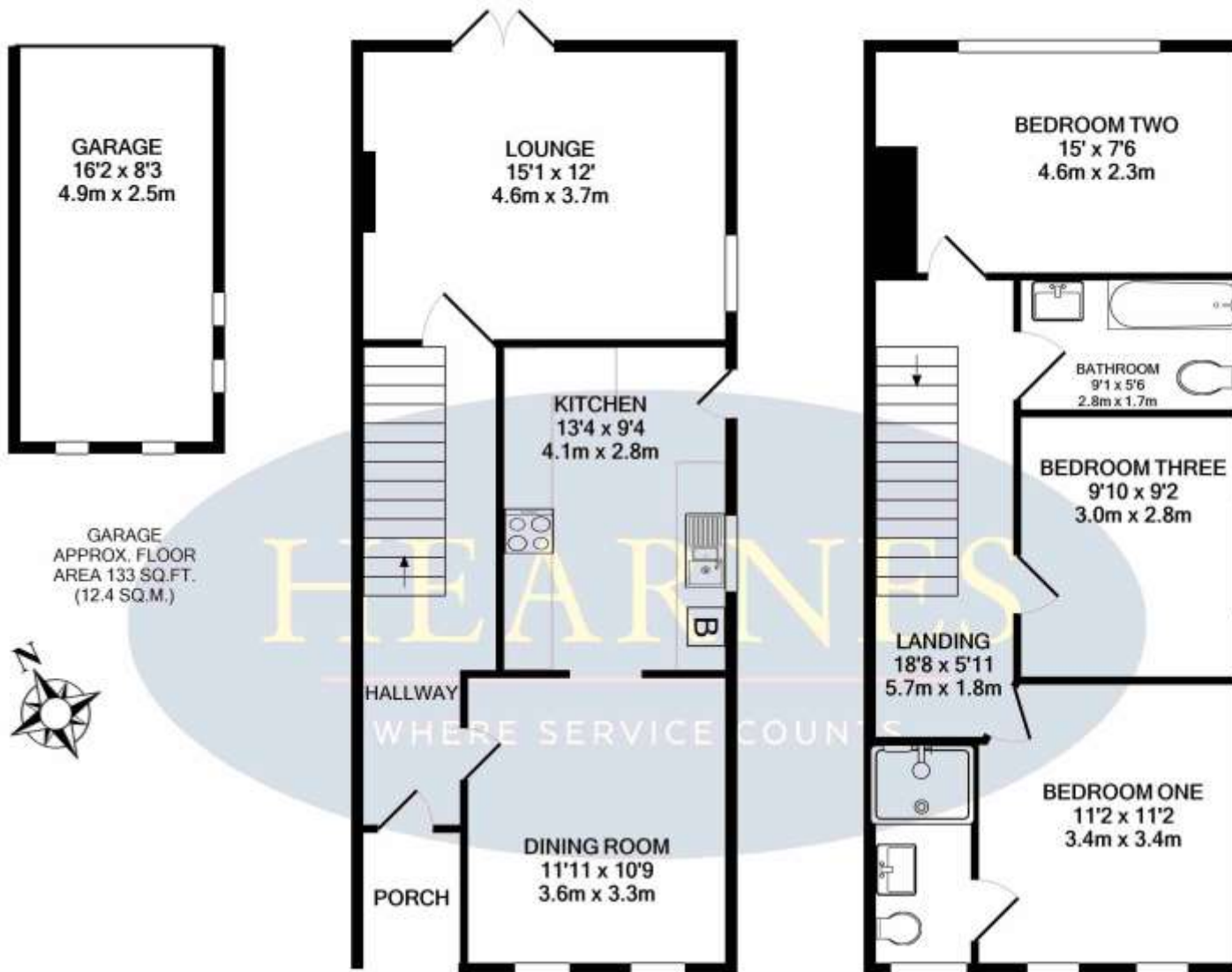
Council Tax Band: C

EPC Rating: E

AGENTS NOTE: The heating system, mains and appliances have not been tested by Hearn's Estate Agents. Any areas, measurements or distances are approximate. The text, photographs and plans are for guidance only and are not necessarily comprehensive.







HEARINGS

WHERE SERVICE COUNTS

GROUND FLOOR
APPROX. FLOOR
AREA 557 SQ.FT.
(51.8 SQ.M.)

1ST FLOOR
APPROX. FLOOR
AREA 550 SQ.FT.
(51.1 SQ.M.)

TOTAL APPROX. FLOOR AREA 1240 SQ.FT. (115.2 SQ.M.)

Whilst every attempt has been made to ensure the accuracy of the floor plan contained here, measurements of doors, windows, rooms and any other items are approximate and no responsibility is taken for any error, omission, or mis-statement. This plan is for illustrative purposes only and should be used as such by any prospective purchaser. The services, systems and appliances shown have not been tested and no guarantee as to their operability or efficiency can be given





Branksome Recreation Ground



www.hearnes.com

18 - 20 Parkstone Road, Poole, Dorset, BH15 2PG

Tel: 01202 377377 Email: poole@hearnes.com

Offices also at: BOURNEMOUTH, FERNDOWN, RINGWOOD & WIMBORNE