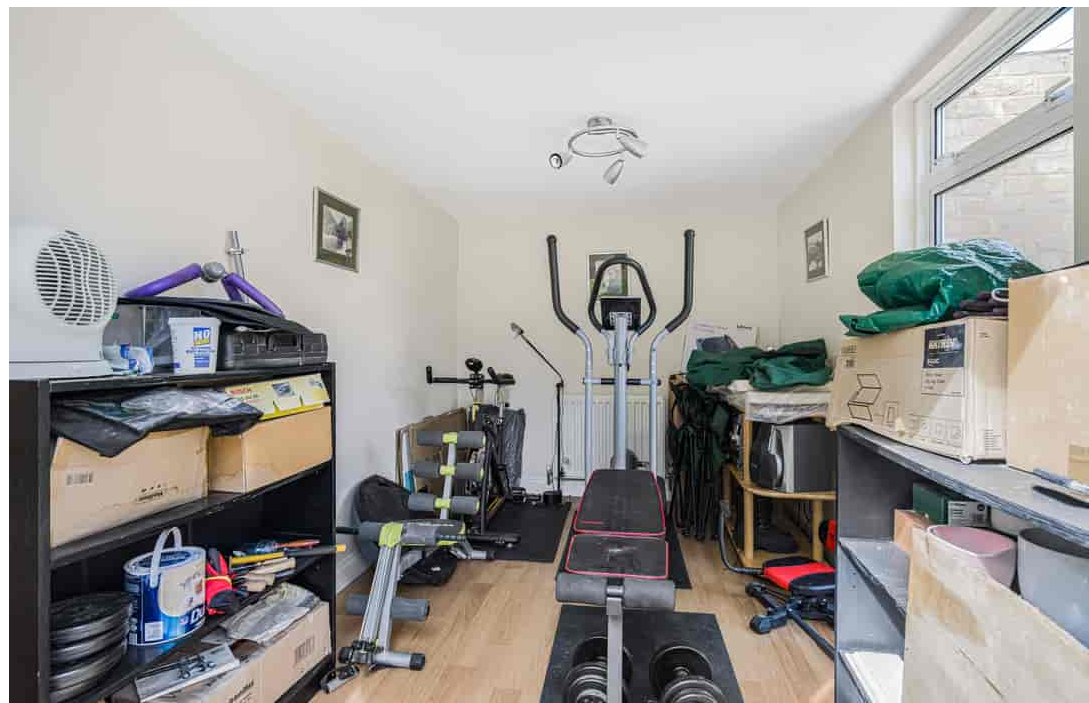




BarrettMove



20 Highwoods Drive, Marlow, Buckinghamshire SL7 3PY
Guide Price £725,000 - Freehold

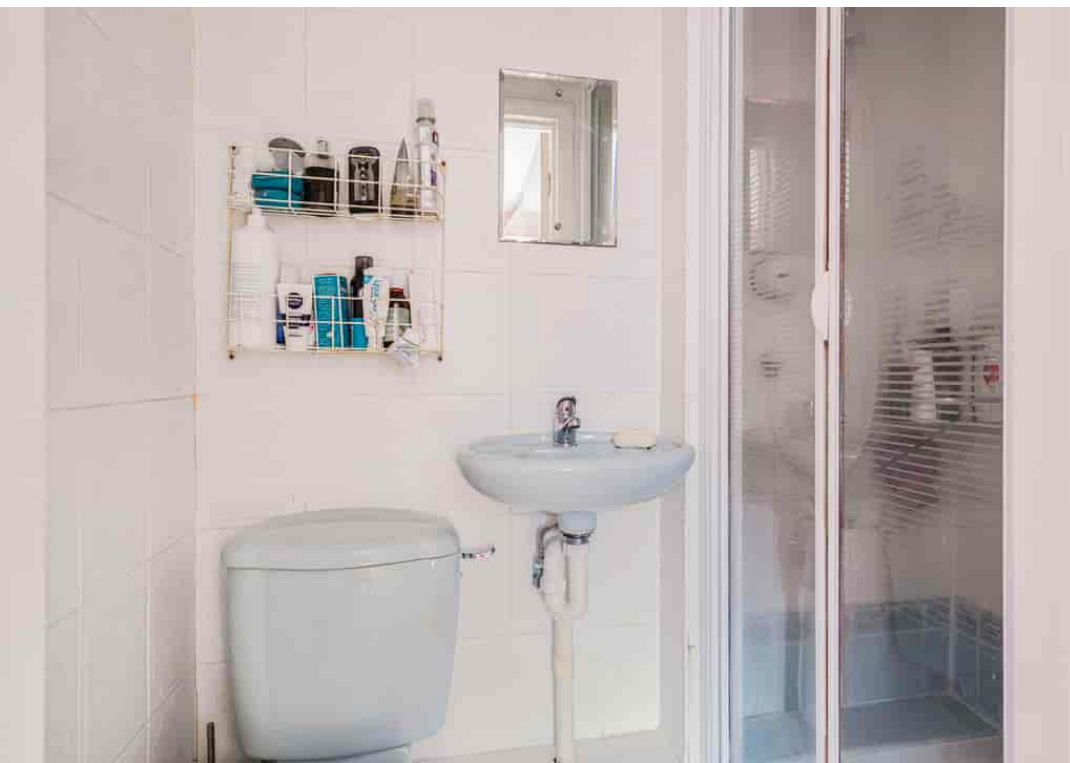


PROPERTY SUMMARY

Barrett Move presents a four bedroom link detached, energy efficient family home with a south facing garden in a popular cul de sac in Marlow Bottom.

POINTS OF INTEREST

- Solar panels - energy efficient house
- Master with ensuite bathroom
- Separate lounge and dining room
- South facing garden
- Home office/study used as home gym
- Driveway parking and garage
- In catchment for Burford primary, Sir William Borlase and Great Marlow schools
- Close to village amenities and woodland walks
- Short walk to Burford School



Approximate Gross Internal Area 1494 sq ft - 139 sq m

Ground Floor Area 964 sq ft – 90 sq m

First Floor Area 530 sq ft – 49 sq m



Although Pink Plan Ltd ensures the highest level of accuracy, measurements of doors, windows and rooms are approximate and no responsibility is taken for error, omission or misstatement. These plans are for representation purposes only as defined by RICS code of measuring practise. No guarantee is given on total square footage of the property within this plan. The figure icon is for initial guidance only and should not be relied on as a basis of valuation.



Energy Efficiency Rating				
	Current	Potential		
Very energy efficient - lower running costs				
(92+)	86	91		
A				
(81-91)				
B				
(69-80)				
C				
(55-68)				
D				
(39-54)				
E				
(21-38)				
F				
(1-20)				
G				
Not energy efficient - higher running costs				
England, Scotland & Wales				
EU Directive 2002/91/EC				