



The Grove, Potters Bar, Hertfordshire, EN6

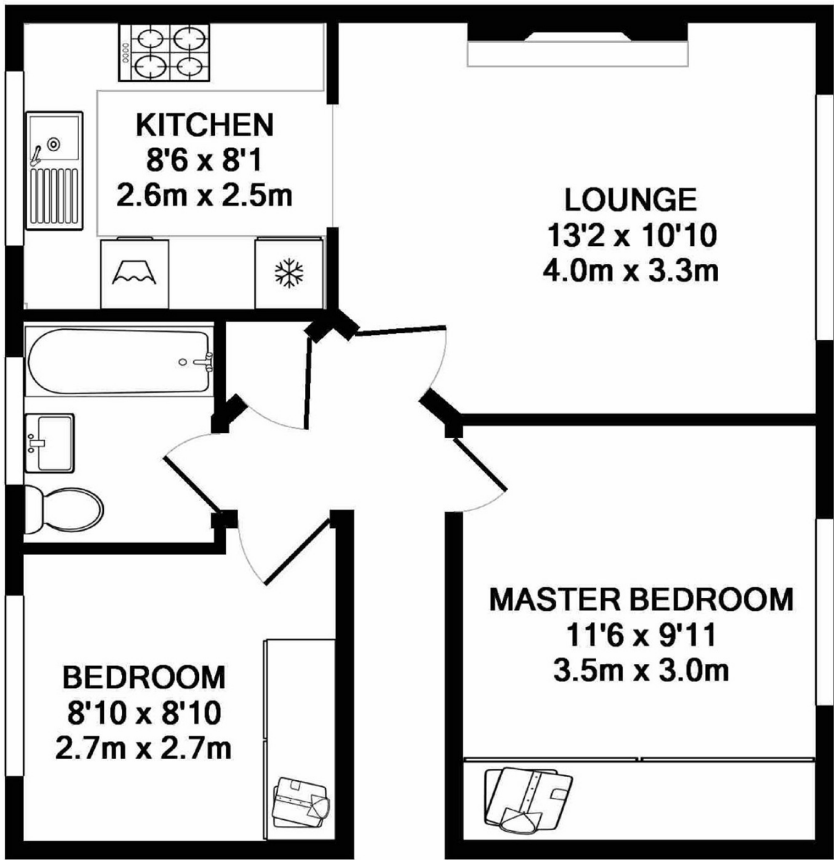
£1,750 pcm

- **Two Bedroom Maisonette**
- **Fitted Wardrobes in Both Bedrooms**
- **Walking Distance to Potters Bar High Street**
- **UPVC Double Glazing**
- **Wooden Flooring Throughout**
- **£1,800pcm**

The Grove, Potters Bar, Hertfordshire, . EN6

£1,750 pcm Freehold

A first floor 2 Bedroom purpose built maisonette with views over Oakmere Park. The property features a modern kitchen, bathroom, fitted wardrobes in both bedrooms with spot lights and wooden flooring throughout. UPVC double glazing throughout. No resident parking permit required. Unfurnished.



TOTAL APPROX. FLOOR AREA 435 SQ.FT. (40.4 SQ.M.)

Whilst every attempt has been made to ensure the accuracy of the floor plan contained here, measurements of doors, windows, rooms and any other items are approximate and no responsibility is taken for any error, omission, or mis-statement. This plan is for illustrative purposes only and should be used as such by any prospective purchaser. The services, systems and appliances shown have not been tested and no guarantee as to their operability or efficiency can be given

Made with Metropix ©2017

