

# 10 Great Western Street, Frome, BA11 1FZ

COOPER  
AND  
TANNER



£385,000 Freehold

An attractive double fronted three-storey townhouse in a popular part of town, just minutes' walk of the town centre and train station.

# 10 Great Western Street, Frome, BA11 1FZ

 4  2  2 EPC C

---

£385,000 Freehold

## DESCRIPTION

The home offers adaptable living accommodation over three floors, a private enclosed garden, a garage and also off-street parking.

The accommodation comprises a 2 year old kitchen to the right-hand side of the property, with fridge freezer, Neff hob and double oven, washing machine and dishwasher included, space for a table and chairs. From the kitchen you also have access to the garden through a set of French doors. On the left-hand side of the home there is a generous sized dual aspect dining room, with space for a dining table and a sofa. Also, on the ground floor there is a WC and a very useful storage space for coats. The ground floor also benefits from high quality solid oak flooring.

On the first floor you are greeted by a landing and from here you have access to the living room which is light and airy due to the fact that it is dual aspect. From here you also have access to another WC and the master bedroom, finished to a beautiful standard with built-in storage and also a good size en-suite.

On the top floor there are a further three bedrooms, one of these is a single bedroom that could be perfect for a child's room or office. There are wall to wall mirror glass wardrobes in one of the bedrooms providing excellent storage. Also, on this floor there is a family bathroom that has a low-level wash basin and a bath.

The current owners have paid incredible detail to the finish throughout the property.

## OUTSIDE

The private wall enclosed rear garden is mainly laid with south Cerney shingle interspersed with young trees and flower beds. There is a terracotta terrace leading from French doors in kitchen. There is a back gate leading to the garage and parking space.

## LOCATION

Frome is a historic market town with many notable buildings and features the highest number of listed buildings in Somerset. Frome offers a range of shopping facilities, a sports centre, several cafés, a choice of pubs, local junior, middle and senior schools, several theatres and a cinema.

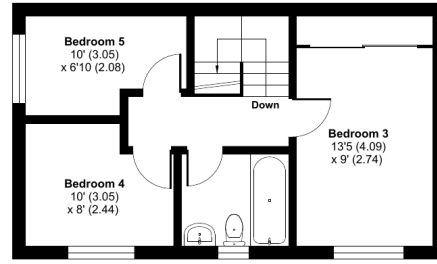
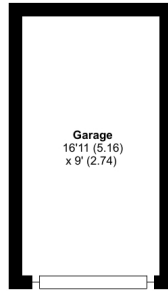




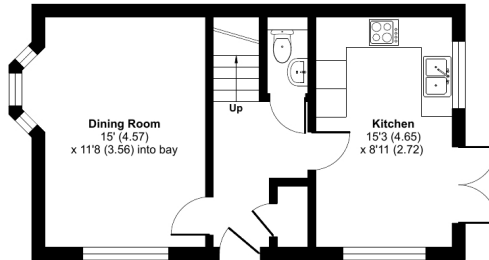
# Great Western Street, Frome, BA11

Approximate Area = 1361 sq ft / 126.4 sq m (includes garage)

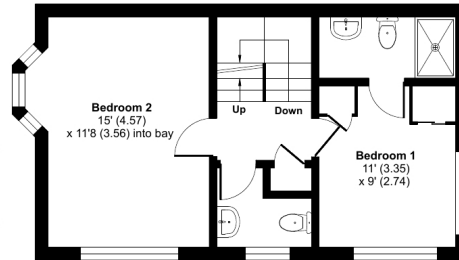
For identification only - Not to scale



SECOND FLOOR



GROUND FLOOR



FIRST FLOOR



Floor plan produced in accordance with RICS Property Measurement Standards incorporating International Property Measurement Standards (IPMS2 Residential). © ricscom 2023. Produced for Cooper and Tanner. REF: 981043



## FROME OFFICE

Telephone 01373 455060

6 The Bridge, Frome, Somerset, BA11 1AR

[frome@cooperandtanner.co.uk](mailto:frome@cooperandtanner.co.uk)

COOPER  
AND  
TANNER

Important Notice: These particulars are set out as a general outline only for the guidance of intended purchasers and do not constitute, nor constitute part of, an offer or contract. All descriptions, dimensions, reference to condition and necessary permissions for use and occupation, warranties and other details are given without responsibility and any intending purchasers should not rely on them as statements or representations of fact but must satisfy themselves by inspection or otherwise as to the correctness of each of them.

