



14 Ascog Hall, Stanley Mount East, Ramsey, Isle of Man. IM8 1NP

One bedroom top floor flat with superb views over Queens Pier and Ramsey Bay offered with no onward chain



£95,000 Leasehold

PROPERTY DESCRIPTION

Manxmove are pleased to offer this well-located one-bedroom apartment within Ascog Hall, Ramsey.

In need of modernisation throughout, this property presents a fantastic opportunity for buyers looking to refurbish to their own taste or as an investment project.

Positioned on the top floor, the apartment boasts elevated views over Queens Pier and Ramsey Bay, best enjoyed from the open plan kitchen/lounge/diner – a light-filled space with real potential.

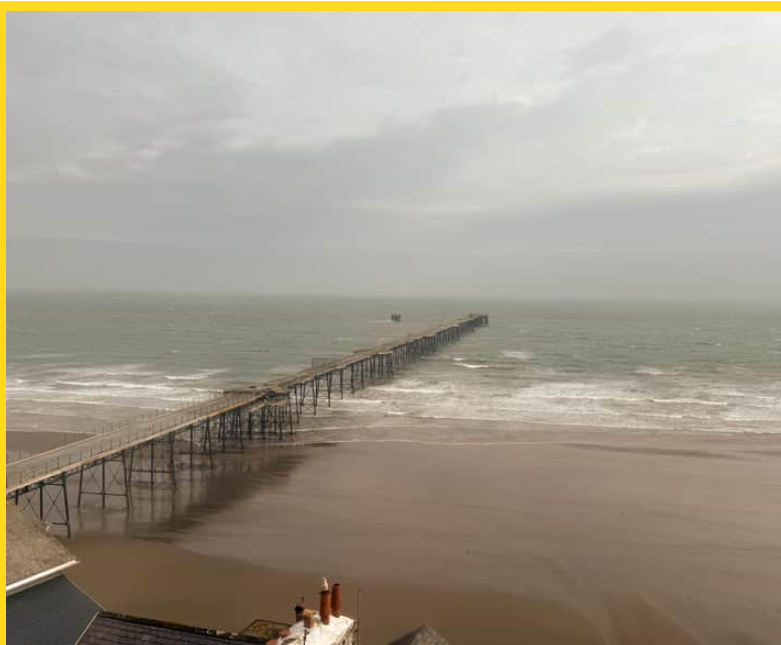
The accommodation also includes a double bedroom with en suite bathroom, again requiring updating, but providing scope to reconfigure or improve.

The property is offered with no onward chain and is available as single occupancy only, making it ideal for a first-time buyer, downsizer or buy-to-let investor.

Early viewing is recommended to appreciate the position and potential of this apartment.

FEATURES

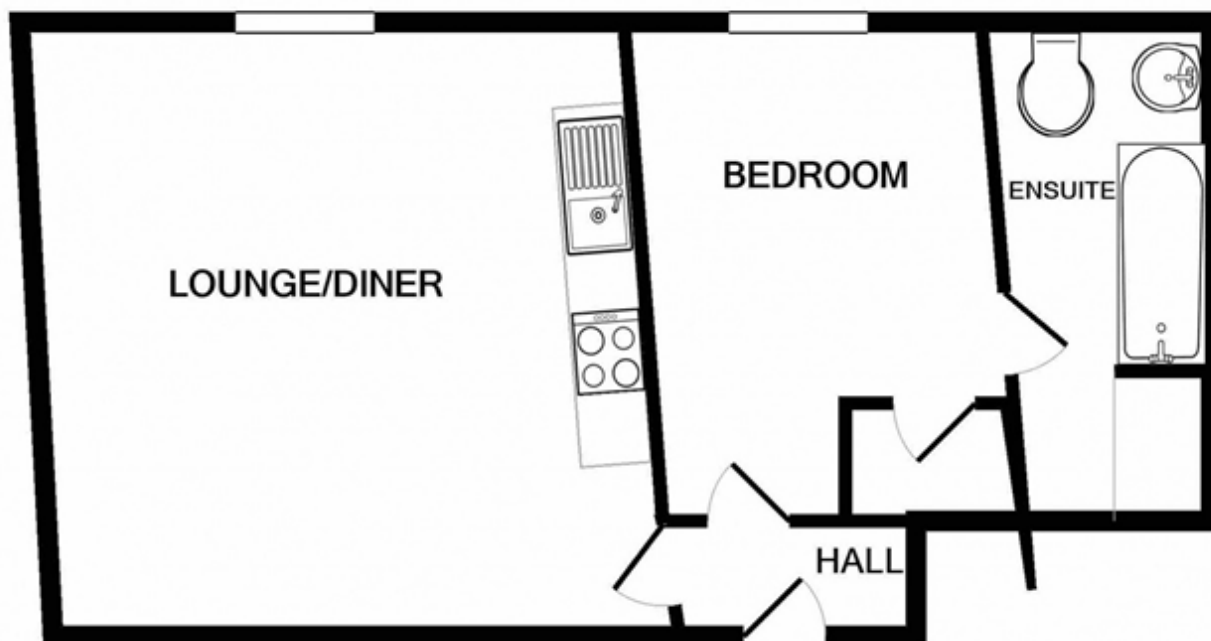
- Top Floor Flat
- Single Occupancy Only
- Easy Access to Amenities of Ramsey
- Open Plan Kitchen/Lounge/Diner
- Double Bedroom with En Suite Bathroom
- Views Over Queens Pier and Ramsey Bay
- No Onward Chain



Property Images



FLOORPLAN



TOTAL APPROX. FLOOR AREA 385 SQ.FT. (35.8 SQ.M.)

Whilst every attempt has been made to ensure the accuracy of the floor plan contained here, measurements of doors, windows, rooms and any other items are approximate and no responsibility is taken for any error, omission, or mis-statement. This plan is for illustrative purposes only and should be used as such by any prospective purchaser. The services, systems and appliances shown have not been tested and no guarantee as to their operability or efficiency can be given

Made with Metropix ©2022

DISCLAIMER: Whilst Manxmove Ltd believe that these details are correct, neither Manxmove Ltd or their clients guarantee their accuracy in any way. Consequently, these details are not to be used to form part of any legally binding contract. Prospective purchasers or tenants are advised to visit this property to satisfy themselves as to the correctness of these details. Please note, we use wide angle camera lenses in order to show as much of each room as possible. This is not intended to mislead any prospective purchasers or tenants in any way and an honest verbal description is always available prior to viewing if required.

Manxmove Estate Agents - Douglas

Victoria Road, Douglas, IM2 4HD

01624 619966

info@manxmove.im