

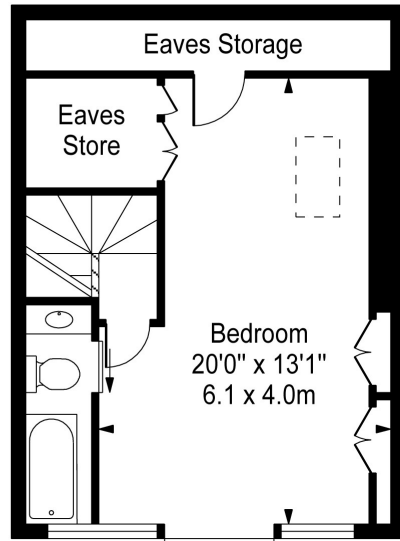
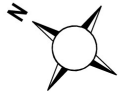


Webb's Road
Between the Commons
SW11

TO LET

Offering generous living space, this wonderfully light three-bedroom flat benefits from its own street entrance and a superb location just moments from Northcote Road and within easy reach of transport links at Clapham Junction.

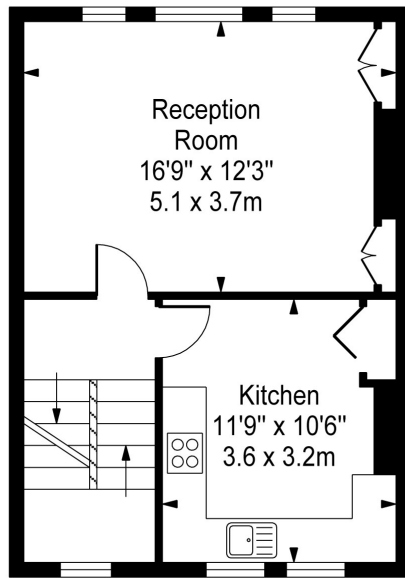
**Webbs Road,
Battersea, SW11**



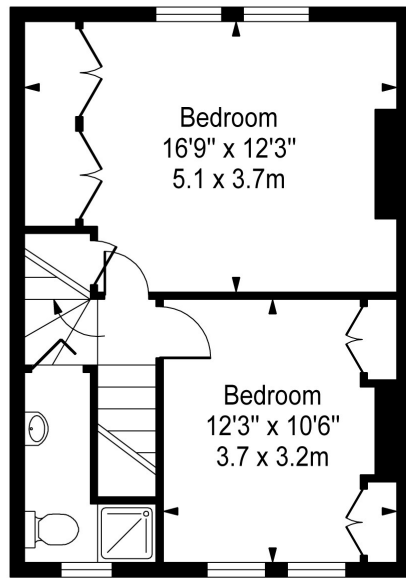
Third Floor



Ground Floor



First Floor



Second Floor

Approx Gross Internal Area 1163 Sq Ft - 108.0 Sq M
(Excluding Eaves Storage)

For Illustration Purposes Only - Not To Scale
photosandfloorplans.com ©

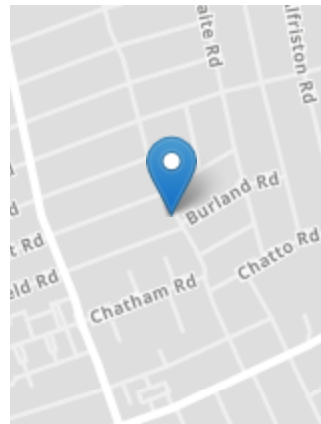


PROPERTY FEATURES

- Victorian Property
- Upper Floors
- En suite Bathroom
- Available Immediately
- Part Furnished
- Kitchen / Breakfast Room
- Reception Room
- Shower Room
- 3 Double Bedrooms
- 1230 Sq.ft / 114 Sq.M + 55 Sq.ft storage

VIEWING BY APPOINTMENT ONLY

The particulars do not constitute part of an offer or contract: the particulars including text descriptions, photographs and plans are only for the guidance of prospective purchasers and must not be relied on as statements of fact: nothing in the particulars shall be deemed as a statement that the property is in good condition nor that any services or facilities are in good working order: measurements given are approximate: prior to viewing we recommend that you discuss particular points of interest with a staff member to avoid a wasted journey



Energy Efficiency Rating			
Very energy efficient - lower running costs	A	B	C
(92 to 100)	(81 to 91)	(69 to 80)	(55 to 68)
(55 to 68)	(39 to 54)	(21 to 38)	(1 to 20)
<small>Not energy efficient - higher running costs</small>			
<small>England, Wales & N.Ireland E.U. Directive 2002/91/EC</small>			

Environmental Impact (CO ₂) Rating			
Very environmentally friendly - lower CO ₂ emissions	A	B	C
(92 to 100)	(81 to 91)	(69 to 80)	(55 to 68)
(55 to 68)	(39 to 54)	(21 to 38)	(1 to 20)
<small>Not environmentally friendly - higher CO₂ emissions</small>			
<small>England, Wales & N.Ireland E.U. Directive 2002/91/EC</small>			