



**£425,000 Leasehold**  
2 bedroom flat

Oaksford Avenue  
Sydenham

# Read all about it...

Set within an elegant Victorian conversion on Oaksford Avenue, this beautifully presented two-bedroom ground-floor flat blends period charm with contemporary comfort. With a southeast-facing private garden and bright open-plan living, it offers a calm, stylish retreat on the borders of Forest Hill and Sydenham.

At the heart of the home is a light-filled open-plan kitchen and lounge, featuring birch-ply cabinetry, integrated appliances, and space to dine and relax. Two well-proportioned bedrooms provide flexibility for guests, home working, or storage, while a neatly arranged three-piece bathroom completes the layout.

The southeast-facing garden is landscaped for privacy and ease, perfect for morning coffee or summer afternoons outdoors.

Just 0.7 miles from Sydenham & Sydenham Hill Stations and under a mile from Forest Hill Station, the flat also enjoys close proximity to artisan cafés, independent shops, popular schools, and green spaces including Crystal Palace Park and Wells Park.

## GROUND FLOOR

### Entrance Hall

Engineered wood flooring, pendant light, under-stair storage cupboard

### Kitchen/Lounge/Diner

3.86m x 4.33m (12' 8" x 14' 2")  
Sash windows, engineered oak floor, pendant light, radiator, open to kitchen area

Kitchen;  
Matching wall & base level units, solid worktop with single-drainer sink and mixer tap, tiled splashback, four-ring gas hob with extractor hood, electric oven, integrated dishwasher and fridge freezer, door leading to the private garden, utility cupboard with plumbing for washing machine.

### Bedroom

3.37m x 4.34m (11' 1" x 14' 3")  
Sash windows to front with shutters, fitted carpet, radiator, pendant light fitting, built-in wardrobes.

### Bedroom

3.37m x 3.25m (11' 1" x 10' 8")  
Sash window overlooking the rear garden, fitted carpet, radiator, pendant light fitting, shelving to alcoves.

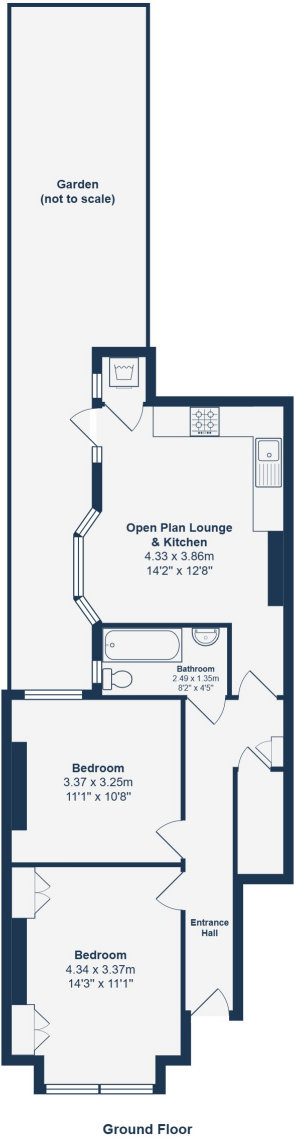
### Bathroom

2.49m x 1.35m (8' 2" x 4' 5")  
Window to side, tiled floor, tiled surround, panel-enclosed bath with shower, fixed wash basin, low-level WC, powered extractor fan, heated towel rail.

## OUTSIDE

### Private Rear Garden

South-east facing rear garden with a patio area leading to shingle. Space for seating and dining.



Total Area: 57.9 m<sup>2</sup> ... 623 ft<sup>2</sup>

Drawn for Stanfords Sales & Lettings

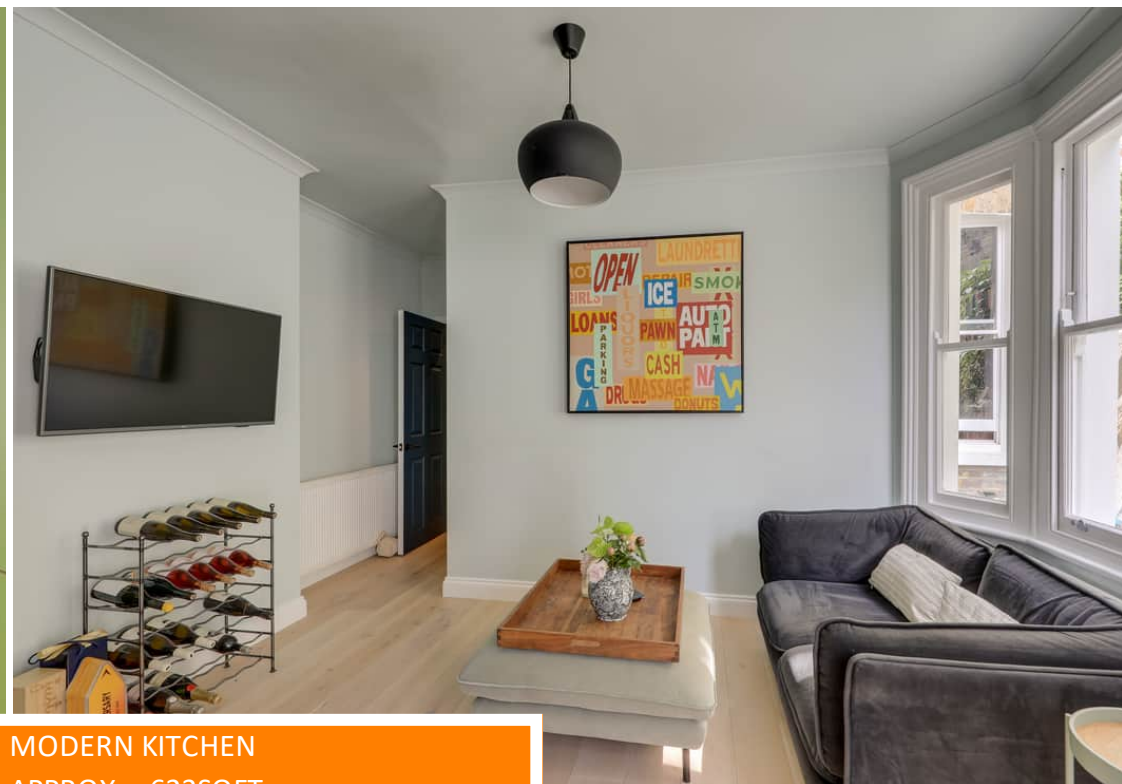
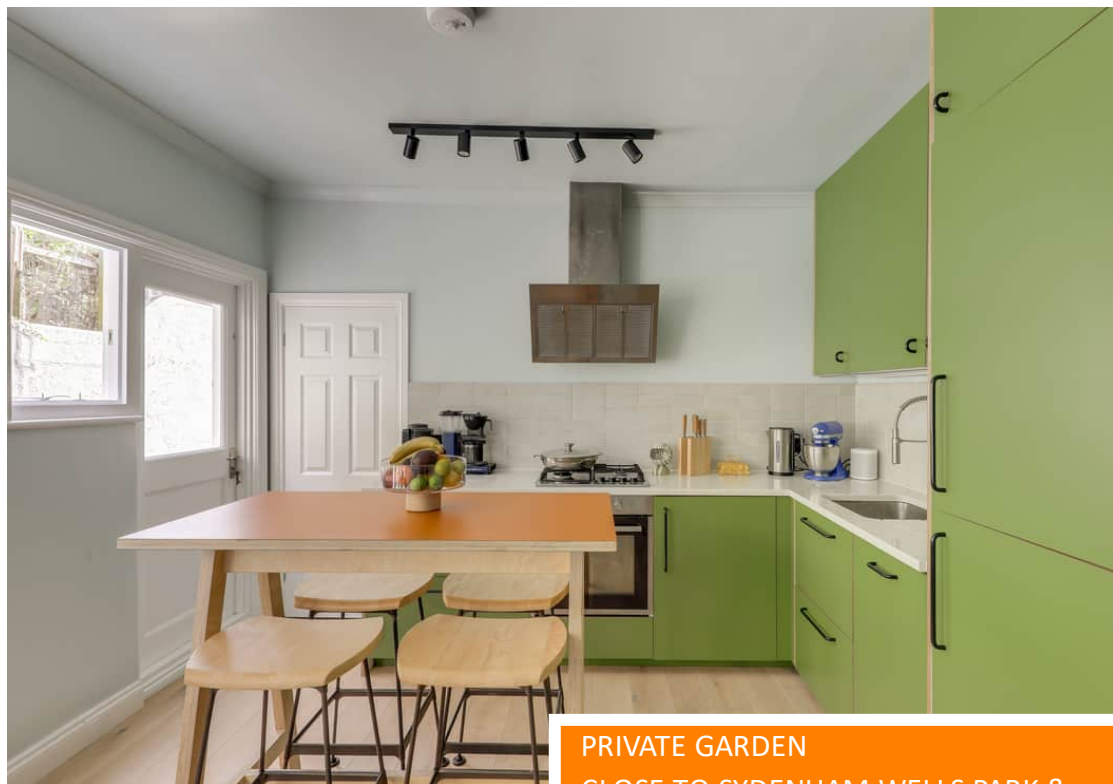
This floorplan is for illustrative purposes only. Whilst every effort has been made to ensure the accuracy of the plan, the dimensions and total area are approximated only and should not be relied upon.

Like what you see?

Call 020 8699 6778 or email us at [foresthill@stanfordestates.london](mailto:foresthill@stanfordestates.london)  
to arrange a viewing or request further information

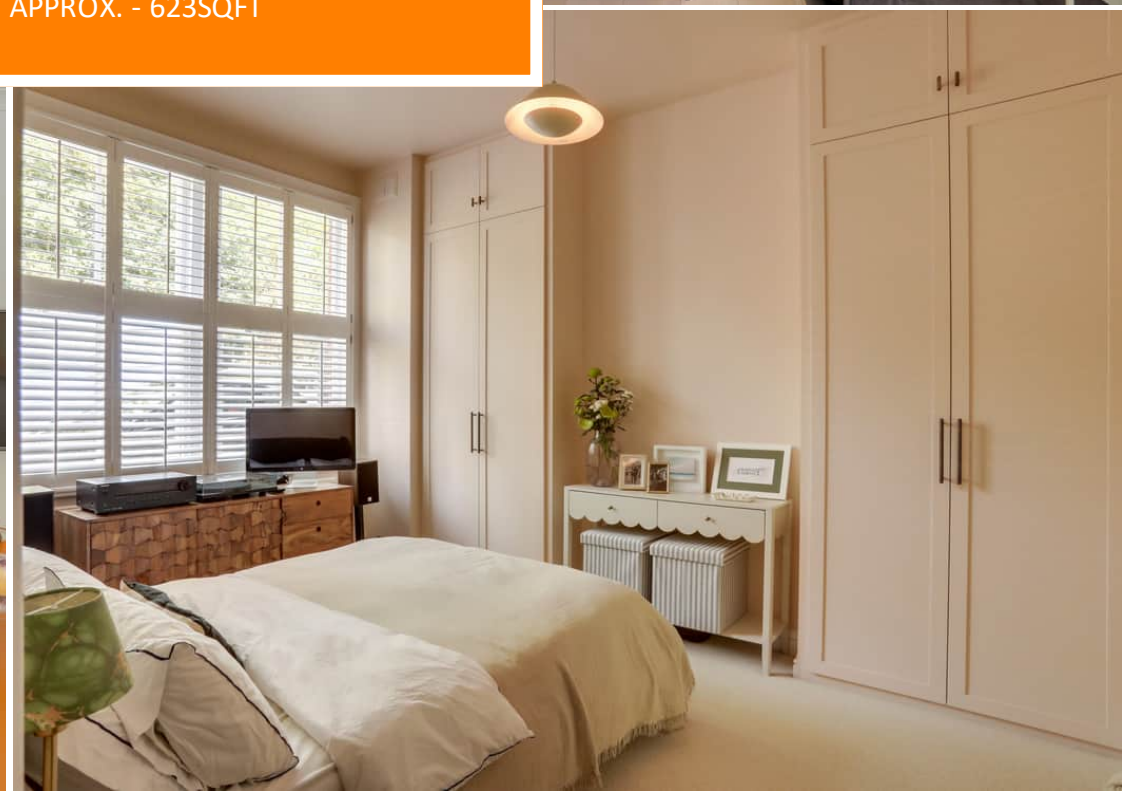
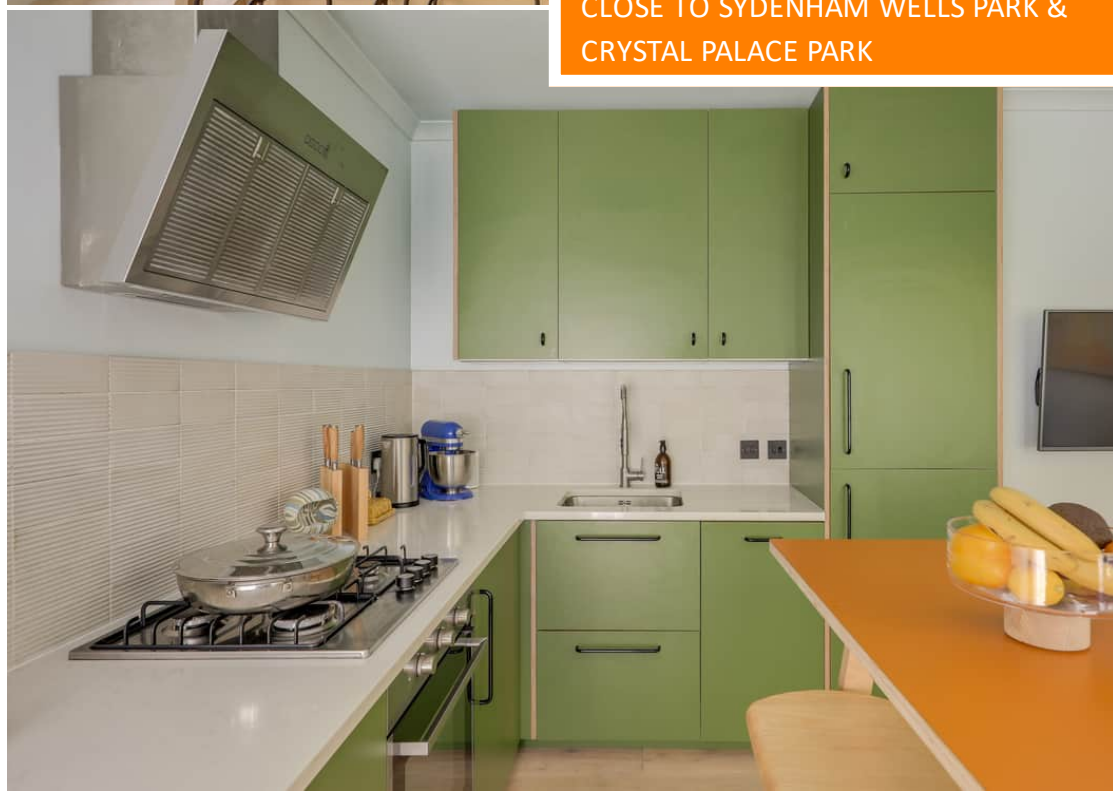
[www.stanfordestates.london](http://www.stanfordestates.london)

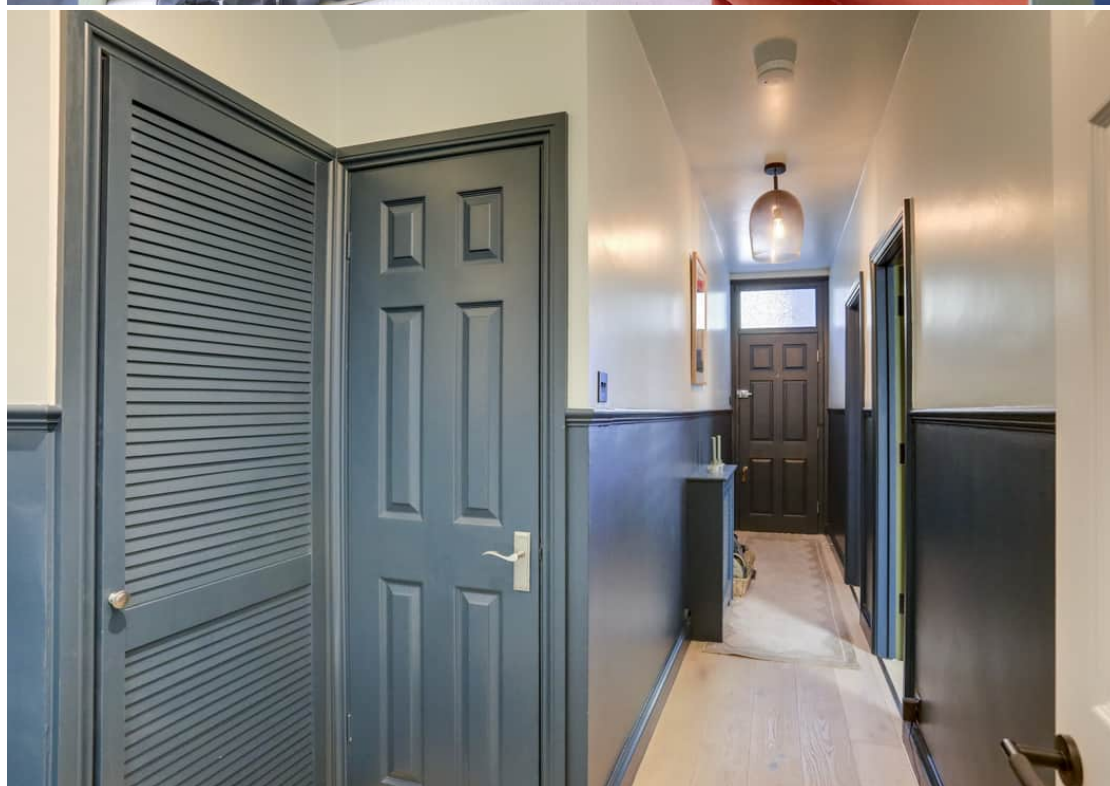
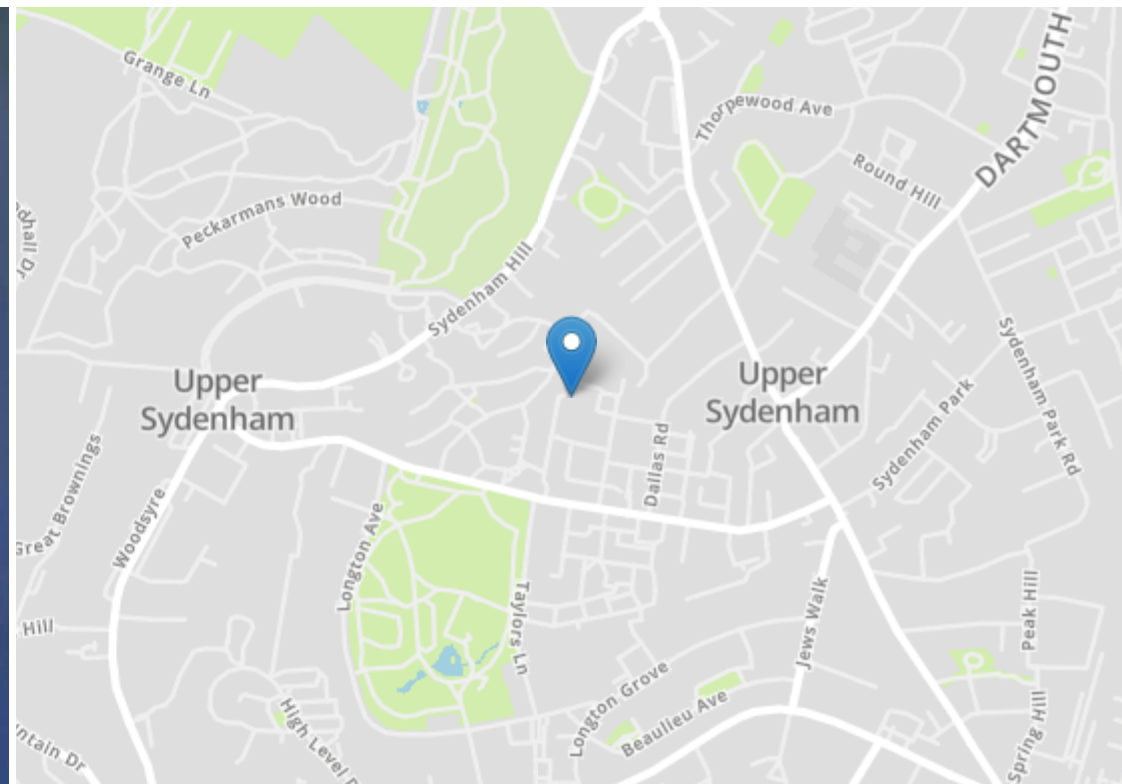




PRIVATE GARDEN  
CLOSE TO SYDENHAM WELLS PARK &  
CRYSTAL PALACE PARK

MODERN KITCHEN  
APPROX. - 623SQFT





Robert Stanford Estates property particulars are produced in accordance with the Consumer Rights Act (2015) and should not be construed as a contract or offer. The contents of these property particulars are to provide a general illustration only and are inconsequential to any decisions to purchase a property. A potential buyer accepts that all representations made by these particulars are made in good faith on behalf of the seller and require verification by a buyers' legal and professional representatives prior to an exchange of contracts. We offer no guarantees for any structural component, service or appliance and while we make every effort to take accurate measurements and distances, they are illustrative only. Any reliance you place on information within these particulars is therefore strictly at your own risk.