

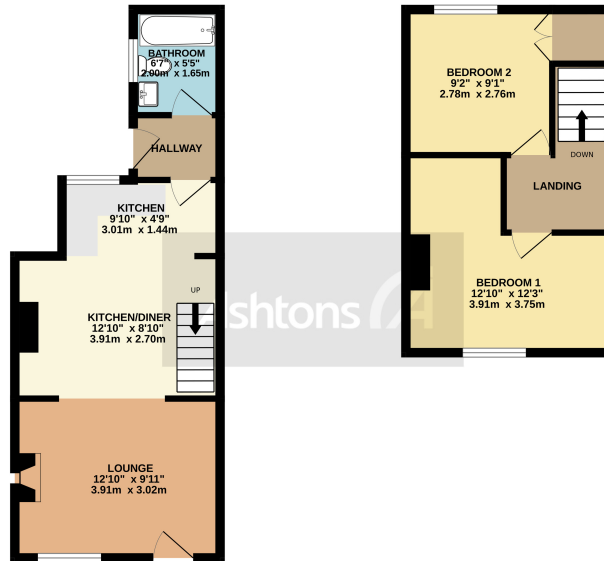


15 Brookfield Cottages, Lymm, Cheshire. WA13 oDH.

Offers in Region of £199,950

Seating area to the front | Two Bedrooms | Feature Fireplace | Retaining a wealth of charm | Three Piece
Bathroom | Sought After Location |





TOTAL FLOOR AREA - 606 sq ft. (56.3 sq.m.) approx.

Whilst every attempt has been made to ensure the accuracy of the floorplans contained here, measurements of these, elevations, views and any other items are approximate and no responsibility is taken for any error, omission or misstatement. This plan is for illustrative purposes only and should be used as such by any prospective purchaser. The vendors, agents and applicants above have not been licensed or guaranteed as to their competency or reliability. Call to be given.
Made with Metapix ©2023

DELIGHTFUL COTTAGE - TWO BEDROOMS - OPEN PLAN LAYOUT - CLOSE TO LYMM VILLAGE - FRONT AND REAR GARDENS.

Retaining a wealth of charm this pretty mid terraced cottage has the benefit of gas central heating and upvc double glazing and briefly comprises a spacious lounge with feature fireplace, dining kitchen with ample storage, rear hallway and bathroom. On the first floor there are two bedrooms. Externally pleasant garden to the front and a courtyard to the rear.

Location



Contact your local office to arrange a viewing:

Padgate: 01925 479334
Great Sankey: 01925 454300
Winwick: 01925 232146
Stockton Heath: 01925 453400
St.Helens: 01744 754120
Wigan: 01942 498862
Culcheth: 01925 764744
Ashton-In-Makerfield: 01942 364446
Newton-Le-Willows: 01925 907770
Commercial Office: 01925 907709
Lettings Head Office: 01925 873533
Financial Services: 01925 221234

Viewing Arrangements

Viewing is strictly by appointment only through Ashtons Estate Agency.

Disclaimer Property Details

These particulars, whilst being believed to be accurate are set out as a general outline only for guidance and do not constitute any part of an offer or contract. Intending purchasers should not rely on them as statements of representation of fact, but must satisfy themselves by inspection or otherwise as to their accuracy. We have not carried out a detailed survey nor tested the services, appliances and specific furnishings. The measurements given are approximate. No person in this firm's employment has the authority to make or give any representation or warranty in respect of the property.

All details, photographs and floorplans are the copyright of Ashtons Estate Agency.



How much you can borrow?
Speak to a mortgage expert in your local office.

Ashtons Financial Services

Ashtons.net rightmove

PrimeLocation.com Zoopla.co.uk

Ashtons