



**Park Grove
Stockport
Cheshire
SK4 4BG**

Offers in Excess of £525,000

bettermove

Park Grove

Stockport

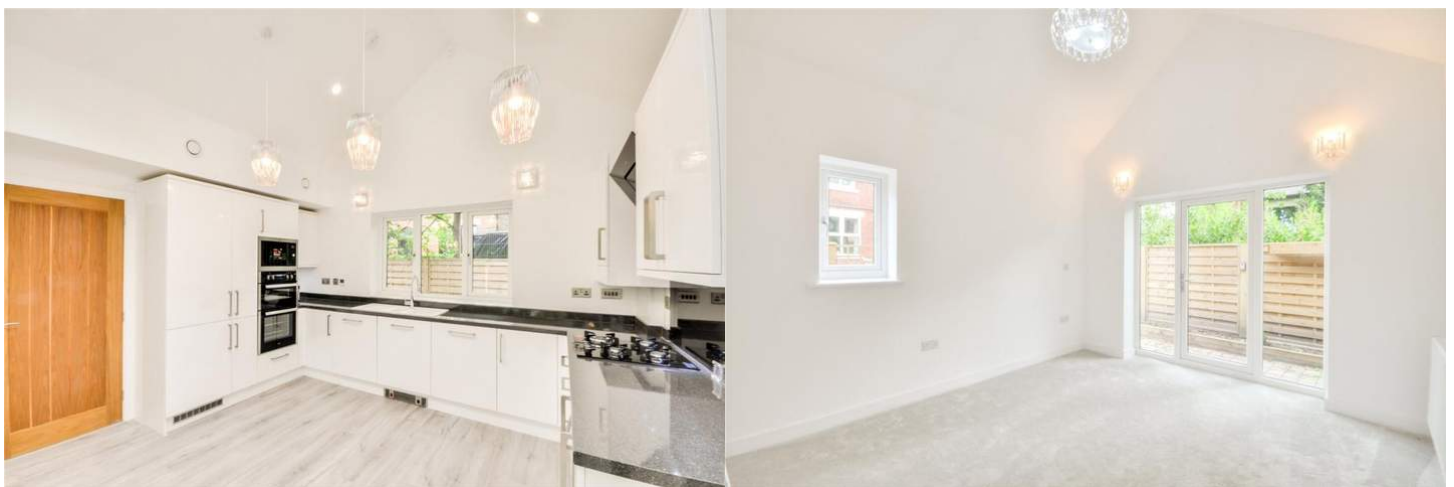
Bettermove are pleased to present this stunning three bedroom eco home bungalow in Heaton Moor, available with no forward chain.

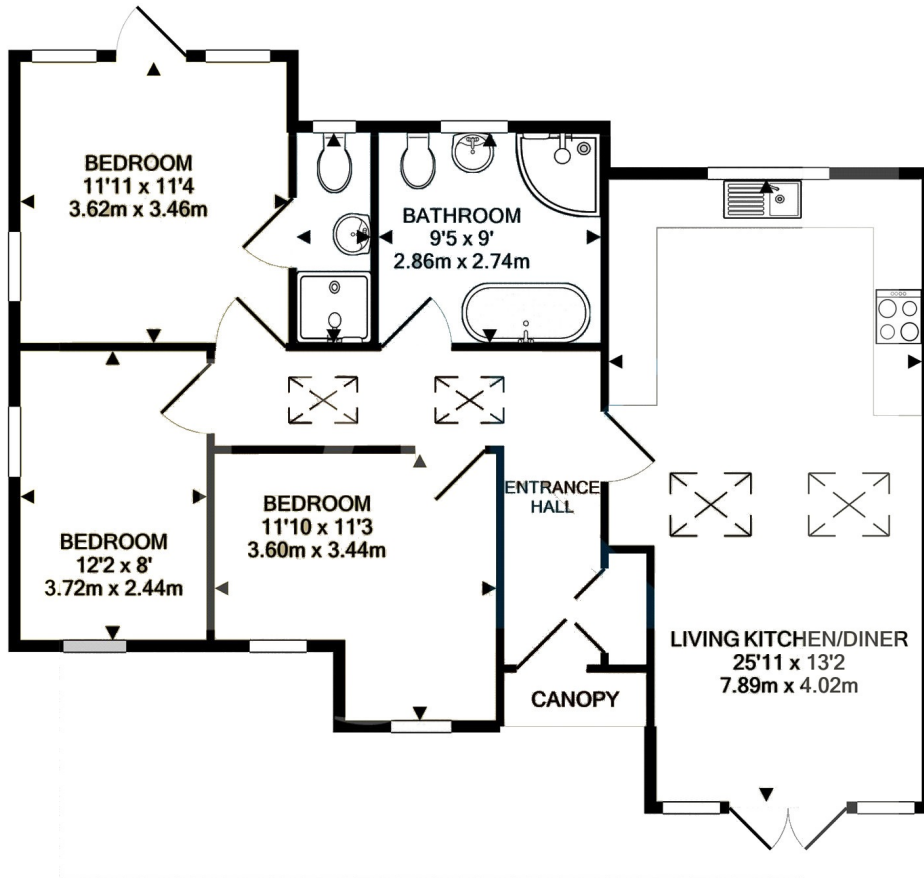
The property benefits from a beautiful modern interior which has been finished to a high specification.

The interior of this well-presented property consist of an open plan kitchen/living/dining room, three double bedrooms with an en suite shower room to the master bedroom and a family bathroom. The exterior boasts a garden with artificial lawn as well as a driveway for at least one car.

Located in the sought after area of Heaton Moor, the property is close to a wide range of local amenities, including supermarkets, shops, restaurants and pubs. Transport connections can be found from Heaton Chapel train station, the A6, M60 and A34.

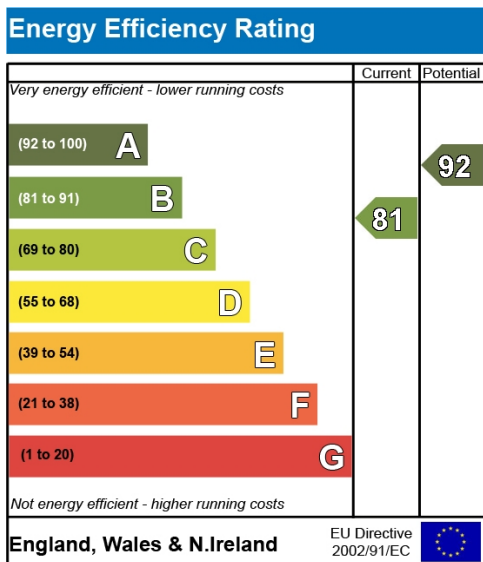
This exciting opportunity is not to be missed! All enquiries can be made through Bettermove on 0330 004 0050.





TOTAL APPROX. FLOOR AREA 914 SQ.FT. (84.9 SQ.M.)

Whilst every attempt has been made to ensure the accuracy of the floor plan contained here, measurements of doors, windows, rooms and any other items are approximate and no responsibility is taken for any error, omission, or mis-statement. This plan is for illustrative purposes only and should be used as such by any prospective purchaser. The services, systems and appliances shown have not been tested and no guarantee as to their operability or efficiency can be given
 Made with Metropix ©2021





20-22 Bridge End, Leeds, LS1 4DJ
t: 0330 004 0050 e: hello@bettermove.co.uk
www.bettermove.co.uk