



£365,000 Leasehold
2 bedroom flat

Taymount Rise
Forest Hill

Read all about it...

Offered to the market with no onward chain, this well-presented two-bedroom first-floor flat is set in the heart of Forest Hill.

Inside, the property features a spacious lounge opening onto a private balcony — a tranquil spot with leafy views. Along the hallway you'll find a well-appointed kitchen and bathroom, as well as two generously sized bedrooms. The flat also benefits from shared residents' parking.

Perfectly suited to buyers seeking excellent transport links and a vibrant local community, the property is just moments from Forest Hill Town Centre. Here you'll find independent shops, supermarkets, and a wide choice of cafés and restaurants, while Forest Hill Station provides frequent Overground and National Rail services into Central London. Outdoor enthusiasts will also enjoy the nearby Horniman Museum, a much-loved landmark with extensive green space and a popular Sunday market showcasing local and independent producers.

NO ONWARD CHAIN
PRIVATE BALCONY
COMMUNAL PARKING

FIRST FLOOR FLAT
SOUGHT AFTER LOCATION
0.2MI TO FOREST HILL STATION

Like what you see?

Call **020 8699 6778** or email us at foresthill@stanfordestates.london
to arrange a viewing or request further information





FIRST FLOOR

Entrance Hall

Ceiling light, storage cupboard, entry phone, fitted carpet.

Living Room

4.64m x 3.28m (15' 3" x 10' 9")

Double-glazed window and door to balcony, radiator, parquet wood flooring.

Kitchen

2.27m x 1.78m (7' 5" x 5' 10")

Double-glazed window, ceiling light, fitted kitchen units, sink with mixer tap and drainer, integrated oven, gas hob and extractor hood, plumbing for washing machine, tile flooring.

Bedroom

3.75m x 3.01m (12' 4" x 9' 11")

Double-glazed window, pendant ceiling light, radiator, fitted carpet.

Bedroom

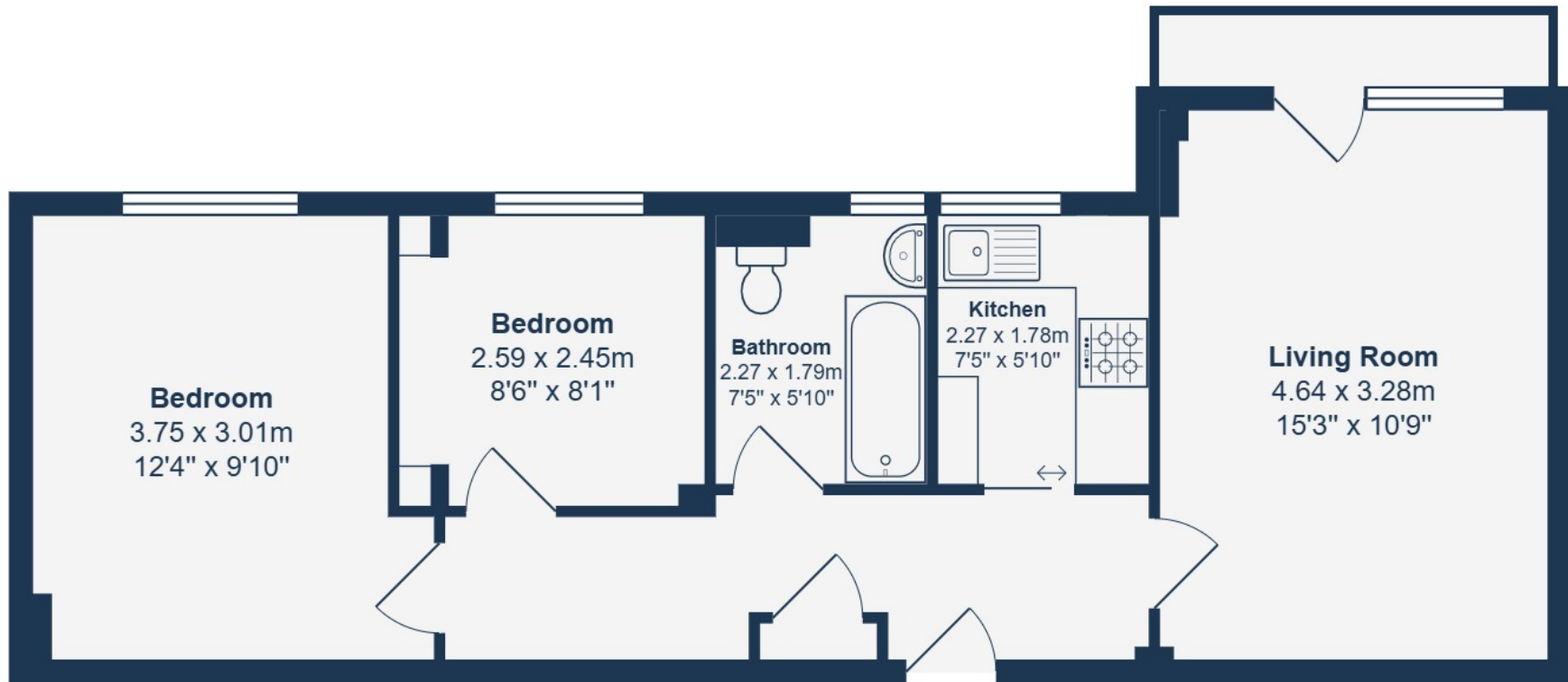
2.59m x 2.45m (8' 6" x 8' 0")

Double-glazed window, pendant ceiling light, radiator, fitted carpet.

Bathroom

2.27m x 1.79m (7' 5" x 5' 10")

Double-glazed window, ceiling light, bathtub with shower, washbasin, WC, heated towel rail, tile flooring.



First Floor

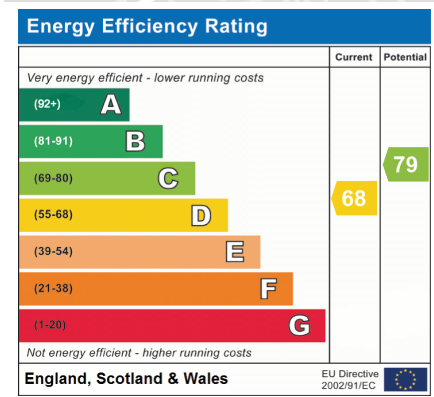
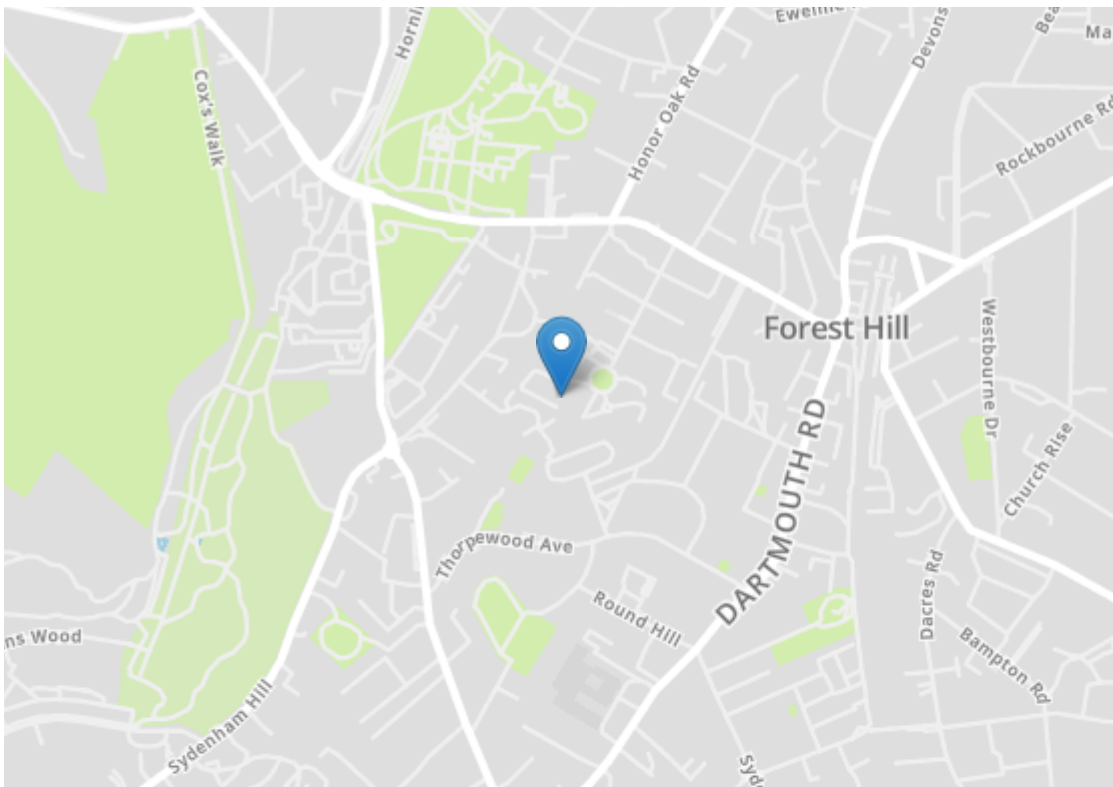
Total Area: 51.1 m² ... 550 ft²

Drawn for Stanfords Sales & Lettings

This floorplan is for illustrative purposes only. Whilst every effort has been made to ensure the accuracy of the plan, the dimensions and total area are approximated only and should not be relied upon.







Robert Stanford Estates property particulars are produced in accordance with the Consumer Rights Act (2015) and should not be construed as a contract or offer. The contents of these property particulars are to provide a general illustration only and are inconsequential to any decisions to purchase a property. A potential buyer accepts that all representations made by these particulars are made in good faith on behalf of the seller and require verification by a buyers' legal and professional representatives prior to an exchange of contracts. We offer no guarantees for any structural component, service or appliance and while we make every effort to take accurate measurements and distances, they are illustrative only. Any reliance you place on information within these particulars is therefore strictly at your own risk.