





33 Shaftesbury Avenue, Feltham, Greater London TW14 9LN
£425,000 - Freehold



PROPERTY DESCRIPTION

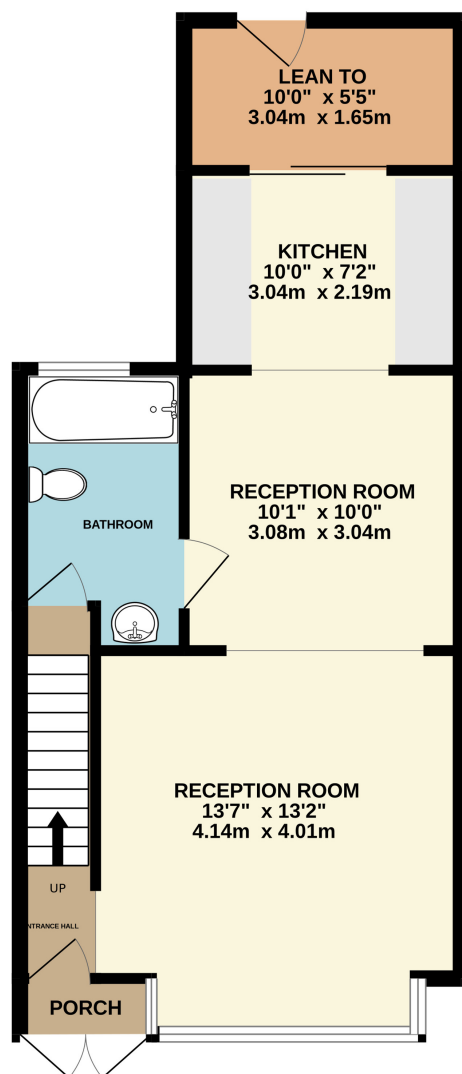
Situated on the popular Shaftesbury Avenue in Feltham, this spacious 3-bedroom semi-detached house presents an exciting opportunity for those seeking a project. In need of modernisation, the property offers ample living space, a good-sized garden, and great potential to be transformed into a stylish family home. With no onward chain, this property is perfect for those looking for a quick and straightforward move. Ideally located close to local amenities, schools, and transport links, early viewing is highly recommended!

POINTS OF INTEREST

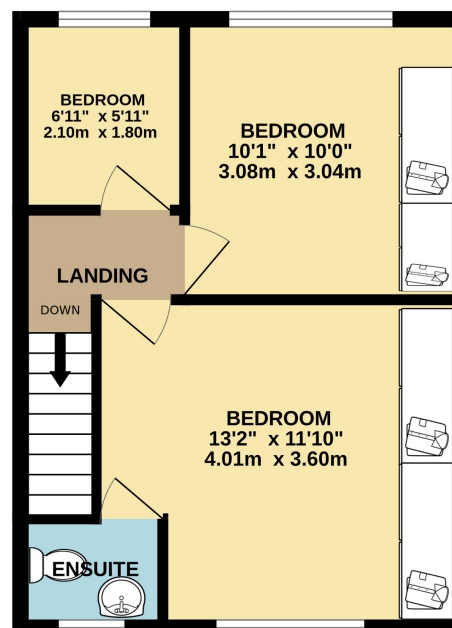
- NO ONWARD CHAIN
- WORK REQUIRED
- LARGE GARDEN
- POTENTIAL TO EXTEND (S.T.P.P.)
- THREE BEDROOMS
- CLOSE TO LOCAL BUS ROUTES



GROUND FLOOR
502 sq.ft. (46.6 sq.m.) approx.



1ST FLOOR
348 sq.ft. (32.3 sq.m.) approx.



TOTAL FLOOR AREA : 850 sq.ft. (78.9 sq.m.) approx.

Whilst every attempt has been made to ensure the accuracy of the floorplan contained here, measurements of doors, windows, rooms and any other items are approximate and no responsibility is taken for any error, omission or mis-statement. This plan is for illustrative purposes only and should be used as such by any prospective purchaser. The services, systems and appliances shown have not been tested and no guarantee as to their operability or efficiency can be given.

Made with Metropix ©2025