



Riverside Cottage, 48 Mill Lane, Welwyn, Hertfordshire, AL6 9ES

£675,000

Delightful two double bedroom semi-detached Victorian cottage situated in the heart of Welwyn village close to all the local shops, restaurants, public houses plus good schools and easy access to the A1 motorway and Welwyn North Station. Unique location with its own private south facing garden and a riverside terrace with steps down to and overlooking the River Mimran plus off road parking. The accommodation comprises of a good-sized living room with a wood burner and casement doors leading to a patio, kitchen with granite work surfaces and a cellar with cloakroom. Upstairs are two bedrooms and a bathroom. The cottage also benefits from Heritage' double glazed windows, gas central heating, extensive built in wardrobes to Bedroom 1 and a boarded loft.

Lane &
BENNETTS

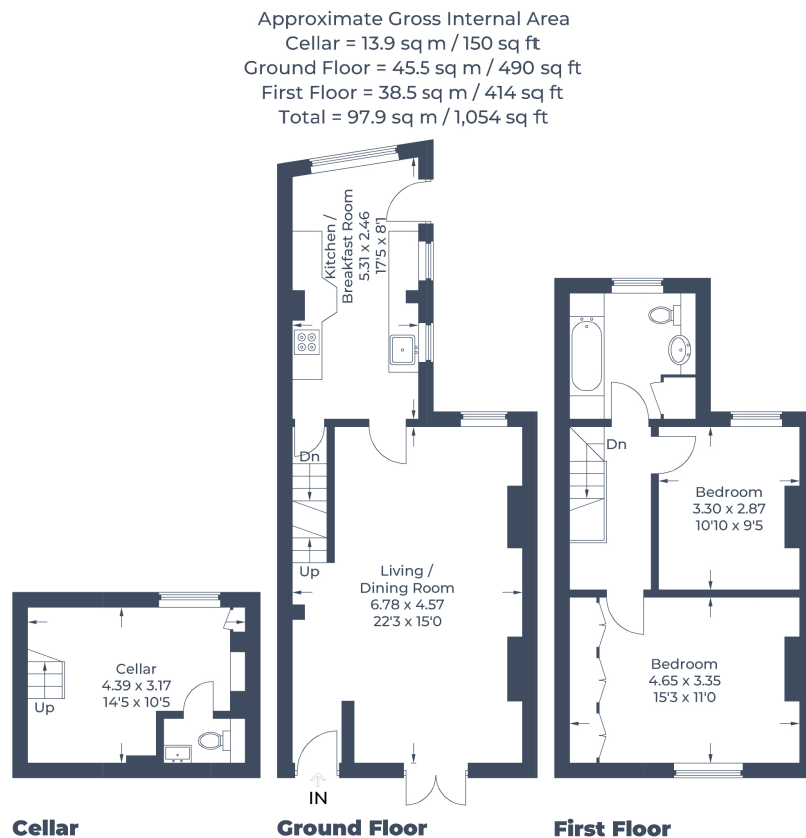


Illustration for identification purposes only,
 measurements are approximate, not to scale.
 © CJ Property Marketing Produced for Lane & Bennetts

- VICTORIAN SEMI-DETACHED COTTAGE
- SITUATED IN THE HEART OF WELWYN VILLAGE
- LIVING ROOM WITH LOG BURNER + FRENCH DOORS TO PATIO
- KITCHEN WITH GRANITE WORK SURFACES
- TWO BEDROOMS
- UPSTAIRS BATHROOM
- CELLAR WITH TOILET
- PRIVATE SOUTH FACING GARDEN + RIVERSIDE TERRACE
- OFF ROAD PARKING
- COUNCIL TAX BAND E / EPC D

