



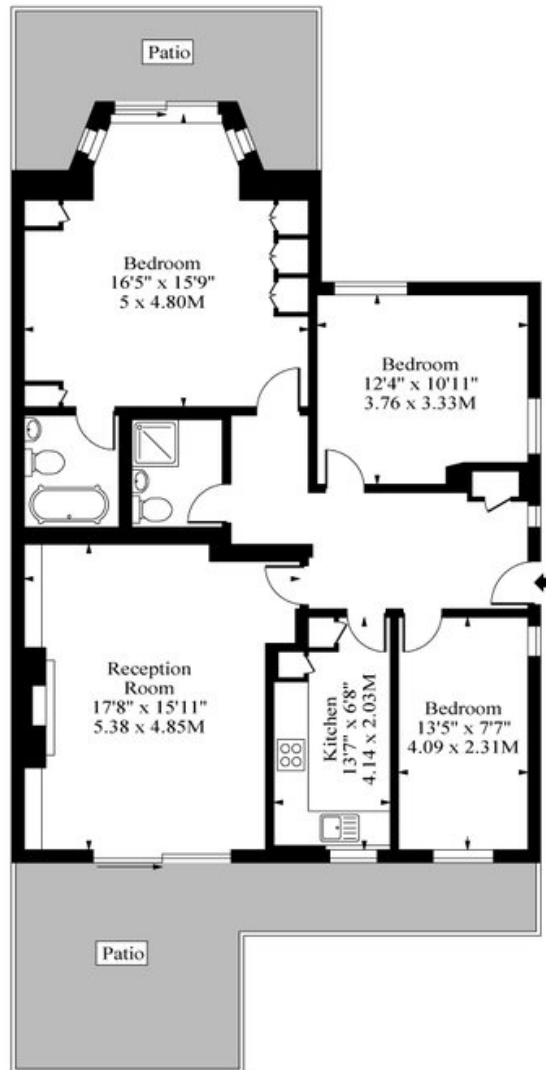
## Priory Road, London, NW6

£950 p/w

- Three Bedroom Apartment
- Large Living Area
- Private Patio
- Bright & Spacious Throughout
- Two Bathroom
- Over 1000sqft
- Communal Garden



**Priory Road NW6**



Garden Floor

Approx Gross Internal Area 1072 Sq Ft - 99.62 Sq M

Measured in accordance with RICS guidelines. Every attempt is made to ensure accuracy  
However all measurements are approximate.

The floor plan is illustrative purposes only and is not to scale

[www.tomekphotography.co.uk](http://www.tomekphotography.co.uk)

