

£179,995  
Leasehold







Whilst every attempt has been made to ensure the accuracy of the floor plan contained here, measurements of doors, windows, rooms and any other items are approximate and no responsibility is accepted. The measurements should not be relied upon for valuation, transaction and/or funding purposes. This plan is for illustrative purposes only and should be used as such. The services, systems and appliances shown have not been tested and no guarantee as to their operability or efficiency can be given.  
Copyright V360 Ltd 2024 | www.houseviz.com



## Features

- ONE BEDROOM
- A MUST SEE
- BALCONY
- NO CHAIN
- PARKING FOR ONE CAR
- WALKING DISTANCE TO MK TRAIN STATION

## Summary of Property

Mason's Residential are delighted to offer this immaculate one bedroom apartment.

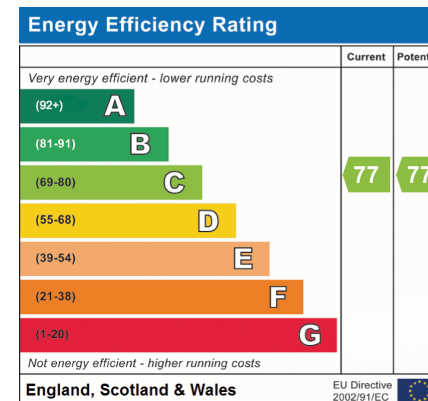
The property is situated in Central Milton Keynes with shops, amenities and a variety of restaurants close by, with the Grand Union Canal within walking distance. This apartment is situated close to the Central Milton Keynes Train station providing good connections to London and Birmingham with easy access to the M1 and A5.

The property offers a good size double bedroom with a balcony offering extra outside space off the sitting room, a kitchen and bathroom.

An allocated parking space for one car is offered behind gated secure access.

Ground rent is payable at £150.00 per month and service charges are £242.00 per month.

The Lease assigned has 108 years.



## Room Descriptions

### ENTERED VIA LIFT

#### SITTING ROOM

11' 8" x 18' 3" (3.56m x 5.56m)

#### BALCONY OFF SITTING ROOM

#### KITCHEN

6' 8" x 8' 9" (2.03m x 2.67m)

#### BEDROOM ONE

8' 10" x 12' 9" (2.69m x 3.89m)

#### BATHROOM

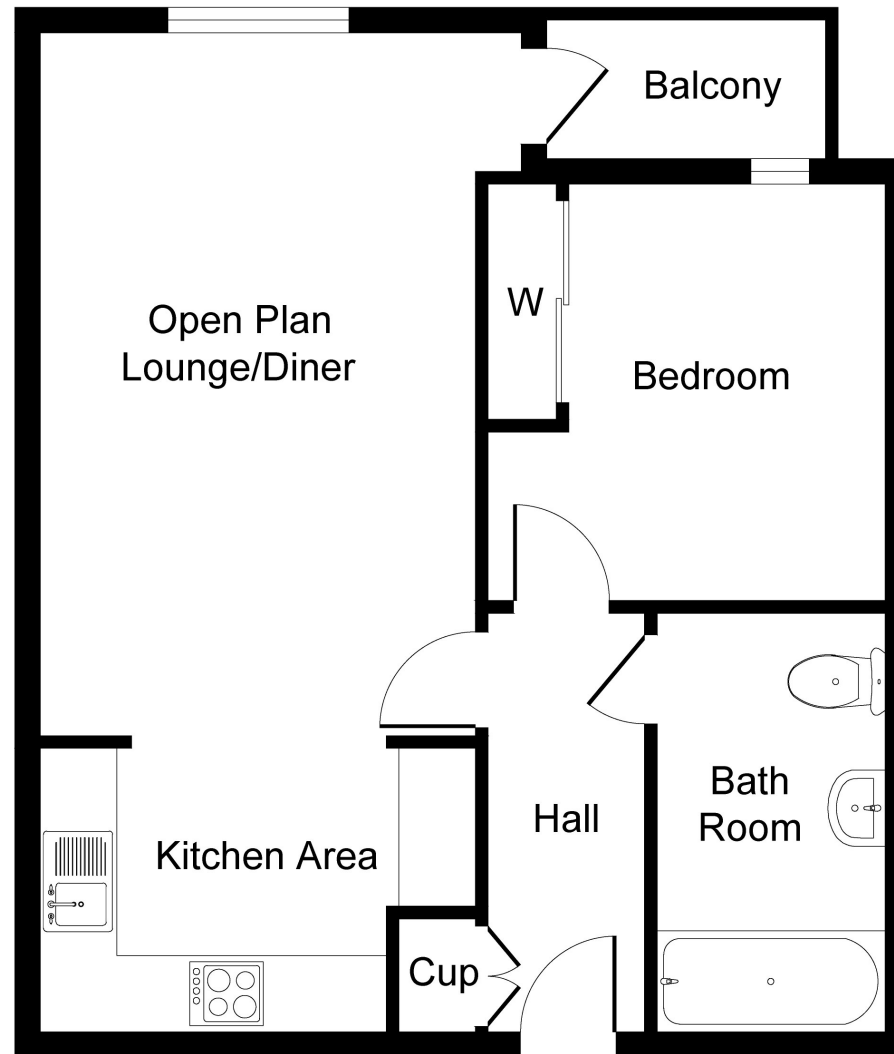
6' 7" x 7' 2" (2.01m x 2.18m)

#### OFF ROAD PARKING FOR ONE CAR

#### PLEASE NOTE

These property particulars do not constitute part or all of an offer or contract. All measurements are stated for guidance purposes only and may be incorrect. Details of any contents mentioned are supplied for guidance only and must also be considered as potentially incorrect. Mason's Residential advise perspective buyers to check all measurements prior to committing to any expense. Mason's Residential confirm we have not checked any appliances, equipment, apparatus, fixtures or fittings at the property and any prospective buyer should conduct their own checks before exchange of contracts. Mason's Residential has not sought to verify the legal title of the property and any prospective buyers must obtain verification and confirmation from their solicitor.

## Floorplan



Whilst every attempt has been made to ensure the accuracy of the floor plan contained here, measurements of doors, windows, rooms and any other items are approximate and no responsibility is taken for any error, omission, or mis-statement. The measurements should not be relied upon for valuation, transaction and/or funding purposes. This plan is for illustrative purposes only and should be used as such by any prospective purchaser or tenant.

The services, systems and appliances shown have not been tested and no guarantee as to their operability or efficiency can be given.

Copyright V360 Ltd 2024 | [www.houseviz.com](http://www.houseviz.com)