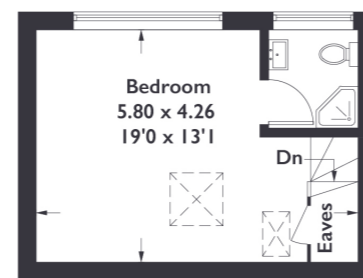
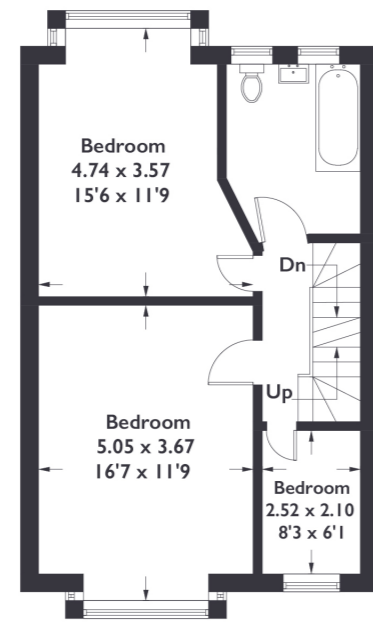
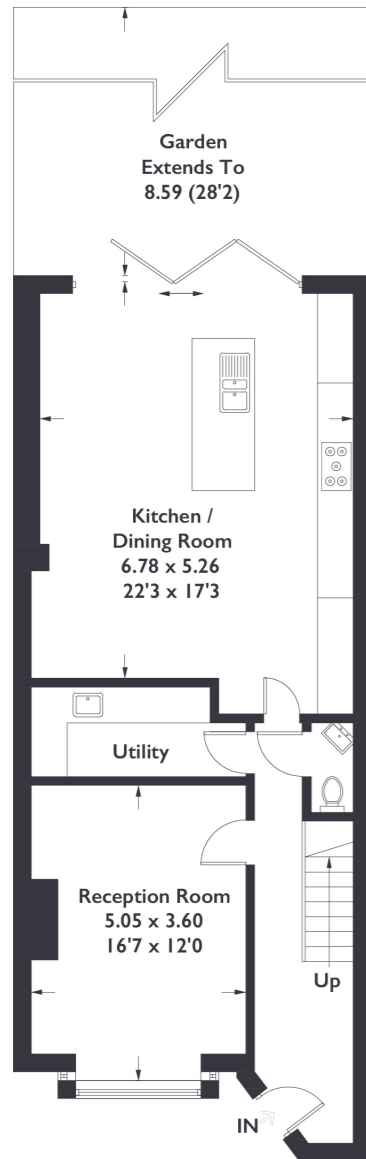


Camborne Avenue, W13

Approximate Gross Internal Area = 145.4 sq m / 1566 sq ft



4 BEDROOM HOUSE

Camborne Avenue, W13

£1,225,000

This Edwardian family home has been thoughtfully renovated to offer a stunning residence. Situated on one of Northfields' most sought-after streets, near Walpole and Lammas parks, shops, and just a short walk from Northfields tube station, this impressive house enjoys a prime location. It boasts four bedrooms, two reception rooms, and a lovely garden.

FEATURES

- Chain Free
- Freehold
- Four Bedrooms
- Three Bathrooms
- Walpole & Lammas Park Nearby
- Fielding Primary school
- Northfields Station
- EPC Rating C



4 BEDROOM HOUSE

Camborne Avenue, W13

£1,225,000

Nestled along this serene, tree-lined street, the house sits gracefully behind a front garden adorned with hedges. A wide pathway guides you to the welcoming, pillar-box red front door.

The living room, on the left, is an elegant space with a gorgeous square bay window, that features an impressive cast iron open fireplace. Indulge in a stunning, fully fitted kitchen with integrated appliances and a spacious, inviting island. This modern space also offers underfloor heating. The ground floor features an incredibly useful utility room with plenty of storage. Step outside to discover a generously sized patio and bi-folding doors that seamlessly blend indoor and outdoor spaces. The manicured lawn, surrounded by mature trees and shrubs, offers a peaceful retreat with convenient rear access. Ascending to the first floor, you'll find two double bedrooms, both boasting ample wardrobe space, feature fireplaces, and large square bay windows. This floor also has a recently refurbished family bathroom. The fourth bedroom overlooks the quiet street below. The top floor reveals the master bedroom, with abundant storage space and an elegant ensuite shower room complete this inviting space. EPC Rating C.

