



Whitings Court

24 Whitings Court | Paynes Park | Hitchin | SG5 1EJ

www.stonegate-estates.co.uk



WHITINGS COURT

Property Description

A two double bedroom retirement apartment situated within this highly regarded town centre development.

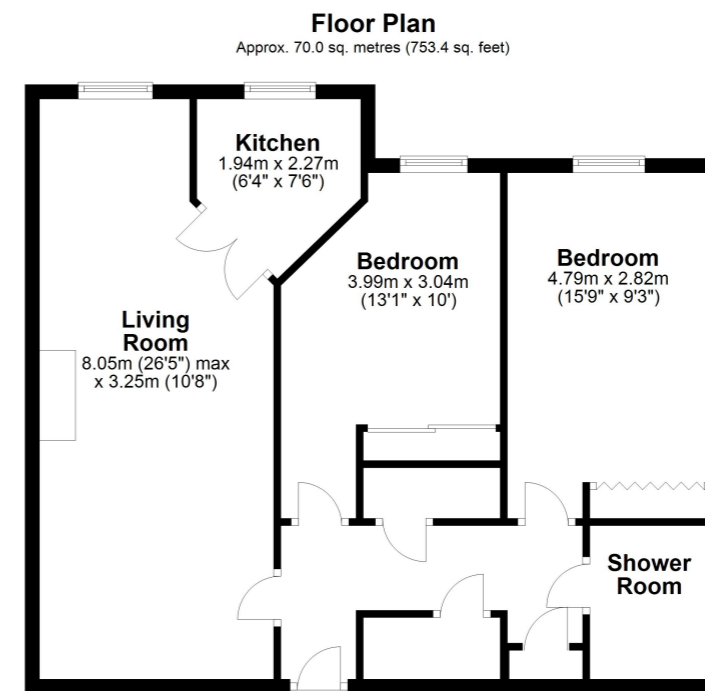
Set on the first floor of this ever popular development and benefitting from spacious accommodation this well presented apartment is well placed for the communal lounge and laundry room. The well proportioned accommodation includes a long entrance hall with two double bedrooms and shower room together with an good sized lounge/dining room and adjacent kitchen.

There is the practical benefit of electric storage heating and double glazed windows plus all the advantages of retirement living, this being a McCarthy and Stone development.

Whitings Court is well placed for access to the town centre (via the Arcade) where there is a variety of shops, including the nearby Waitrose store plus restaurants and bars within the town's attractive and historic centre. The apartment is set to the rear of the block and features the 24 hour Careline facility, a house manager and communal facilities that include the resident's lounge, laundry room and communal garden.

£255,000 Leasehold





All measurements shown are approximate and for guidance only. Garages and workshops are not included in any gross floor areas unless integral to the main building where they will be included.
Plan produced using PlanUp.



- Retirement Apartment
- Two Double Bedrooms
- Town Centre Location
- Spacious Accommodation
- Good Condition Throughout
- Development Manager
- Lift to all Floors
- Communal Lounge & Garden

EPC Rating: B

Stonegate Estate Agents

01462 438979

sales@stonegate-estates.co.uk | www.stonegate-estates.co.uk

