



11 April Place Buckhurst Road, Bexhill on Sea,
East Sussex, TN40 1UE

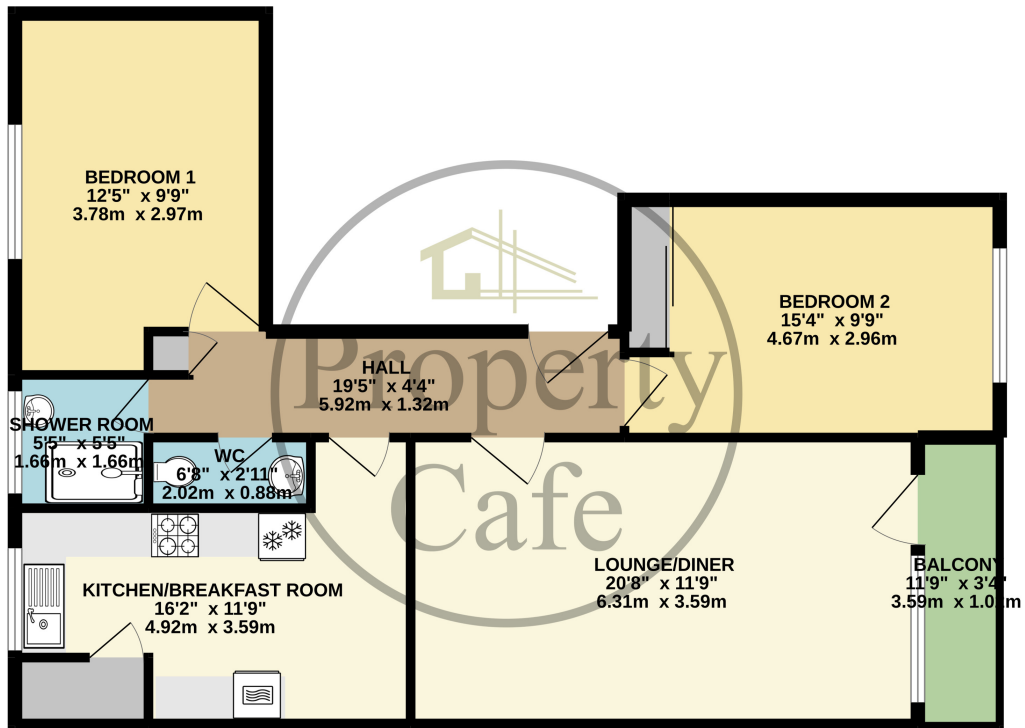
£220,000



- Spacious First Floor Apartment
- Two Double Bedrooms with Storage
- South Facing Lounge With Balcony
- Modern Fitted Kitchen-Diner
- Kitchen with All Appliances Included
- Shower Room with Sep W.C
- Single Garage En-Bloc
- Close To Town Center & Station
- Secure Communal Entrance & Lift
- Well Managed Building (Low Outgoings)
- Long Lease & Share Of Freehold
- Ideal & Convenient Location
- 950 Year Lease (Low Maintenance Charges)
- Sold With No Onward Chain!



FIRST FLOOR APARTMENT
823 sq.ft. (76.5 sq.m.) approx.



TOTAL FLOOR AREA : 823 sq.ft. (76.5 sq.m.) approx.

Whilst every attempt has been made to ensure the accuracy of the floorplan contained here, measurements of doors, windows, rooms and any other items are approximate and no responsibility is taken for any error, omission or mis-statement. This plan is for illustrative purposes only and should be used as such by any prospective purchaser. The services, systems and appliances shown have not been tested and no guarantee as to their operability or efficiency can be given.
Made with Metropix ©2022.

