



Gladstone Park Gardens  
London  
NW2 6JX

Offers In Excess Of  
£1,150,000

bettermove

# Gladstone Park Gardens London

Bettermove are proud to present this 6 bedroom semi-detached house in London.

The property benefits from double glazing, gas central heating throughout and has off street parking available.

The council tax band is E.

The interior of this beautifully presented property comprises a spacious living room, dining room, w/c, bedroom and fitted kitchen on the ground floor. The first floor consists of 4 bedrooms, 1 en-suite and the family bathroom. The second floor holds a further bedroom with dressing room and bathroom. The exterior boasts a private rear garden, perfect for enjoying the summer months.

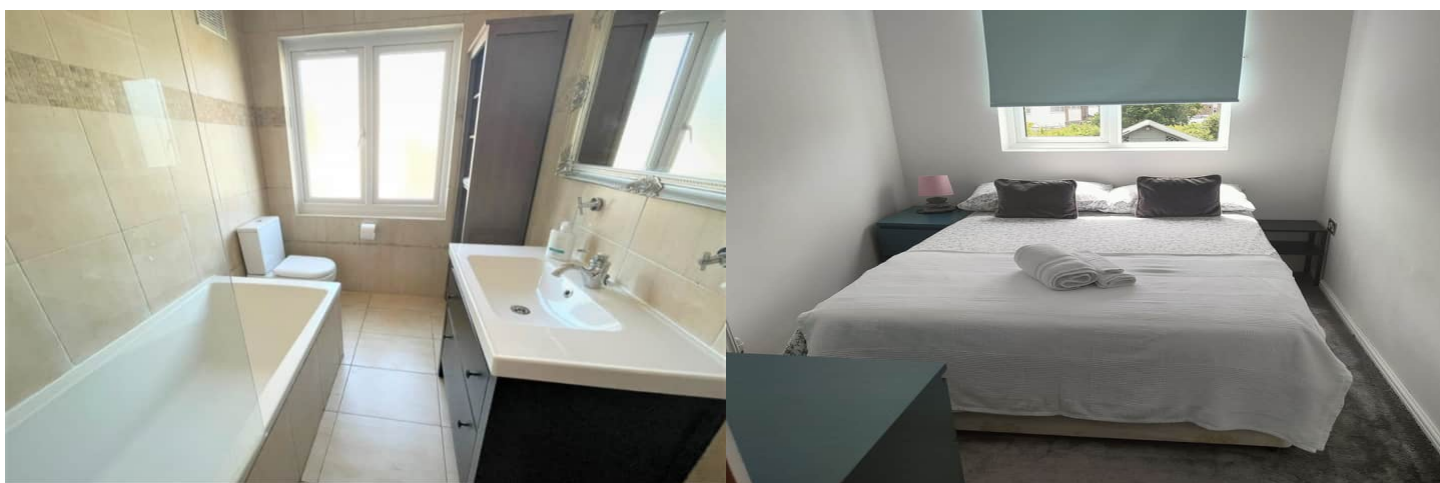
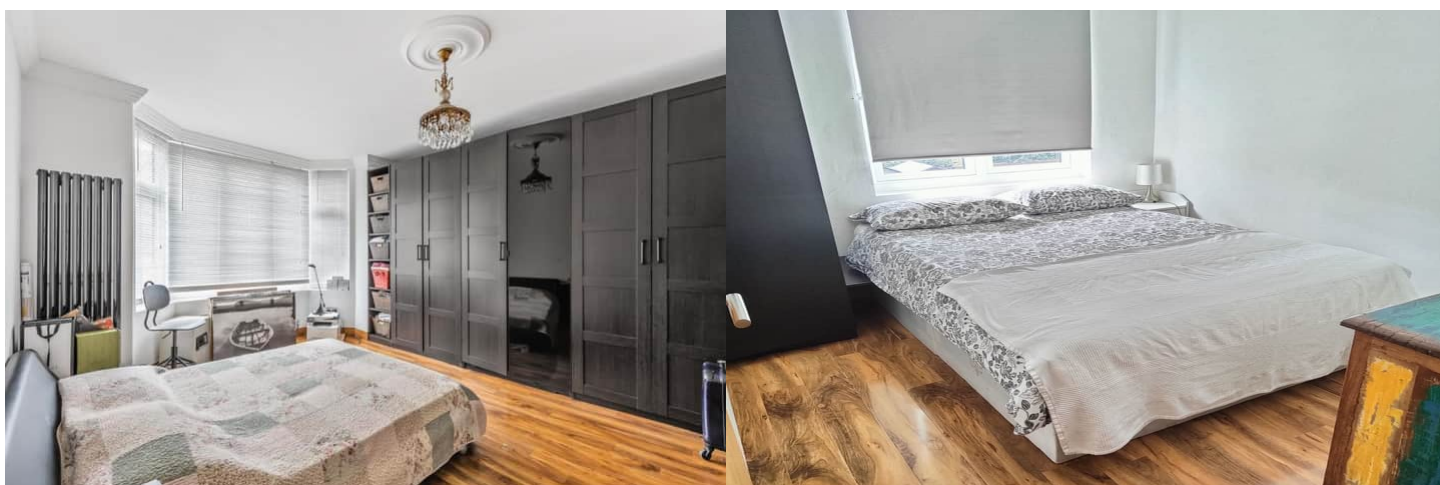
Located just north of the center of London, the property is close to a range of amenities, including shops, supermarkets, restaurants and pubs. Excellent transport connections can be found from the A5, M1 and many local transport links.

This exciting opportunity should not be missed! All enquiries can be made through Bettermove on 0330 004 0050.

You can secure the purchase today by paying an exclusivity fee of £1,000 which gives you the rights to purchase within a given timeframe.

Paying this fee ensures that the seller takes their property off the market and reserves it exclusively for you, therefore eliminating the risk of gazumping and aborted costs.

The exclusivity fee is returned to you upon successful completion of the property.







Energy Efficiency Rating		
	Current	Potential
<i>Very energy efficient - lower running costs</i>		
(92+) <b>A</b>		
(81-91) <b>B</b>		
(69-80) <b>C</b>	74	81
(55-68) <b>D</b>		
(39-54) <b>E</b>		
(21-38) <b>F</b>		
(1-20) <b>G</b>		
<i>Not energy efficient - higher running costs</i>		
<b>England, Scotland &amp; Wales</b>	EU Directive 2002/91/EC	



20-22 Bridge End, Leeds, LS1 4DJ  
t: 0330 004 0050 e: hello@bettermove.co.uk  
[www.bettermove.co.uk](http://www.bettermove.co.uk)