



23 Hillberry Meadows, Douglas, Isle of Man. IM2 7BJ

Spacious true bungalow on a private plot within a quiet residential cul-de-sac. The property has spacious reception rooms, 3 double bedrooms, 2 bathrooms and parking for several vehicles.



£379,950 Freehold

PROPERTY DESCRIPTION

Open House - Thursday 17th April 12-2PM

Welcome to this charming true bungalow featuring an inviting entrance hallway and a spacious lounge with a wall-mounted electric fire and twin light tunnels. The dining room/sun room offers ample space for entertaining, leading to a large flagged patio and garden. The L-shaped kitchen is fitted with Shaker-style units, a Zanussi oven, and ample natural light.

The property includes three well-sized bedrooms, with the master bedroom providing a bright, airy retreat. The family bathroom boasts a large walk-in shower and a stylish four-piece suite. An additional en-suite complements the third bedroom.

Outside, enjoy a manageable front garden with off-road parking for up to three vehicles, and a generous rear garden featuring a patio area, lawn, and a timber shed. The home well situated closed to schools, doctors, pub, pharmacy and shop. Perfect for families and people looking to downsize, this property is not to be missed

FEATURES

- Open House - Thursday 17th April 12-2PM
- Spacious True Bungalow
- Quiet Residential Cul-de-Sac
- Lounge plus Sun Room and Kitchen
- 3 Double Bedrooms (1 En Suite) plus Bathroom
- Private Garden and Patio
- Internal Inspection Recommended

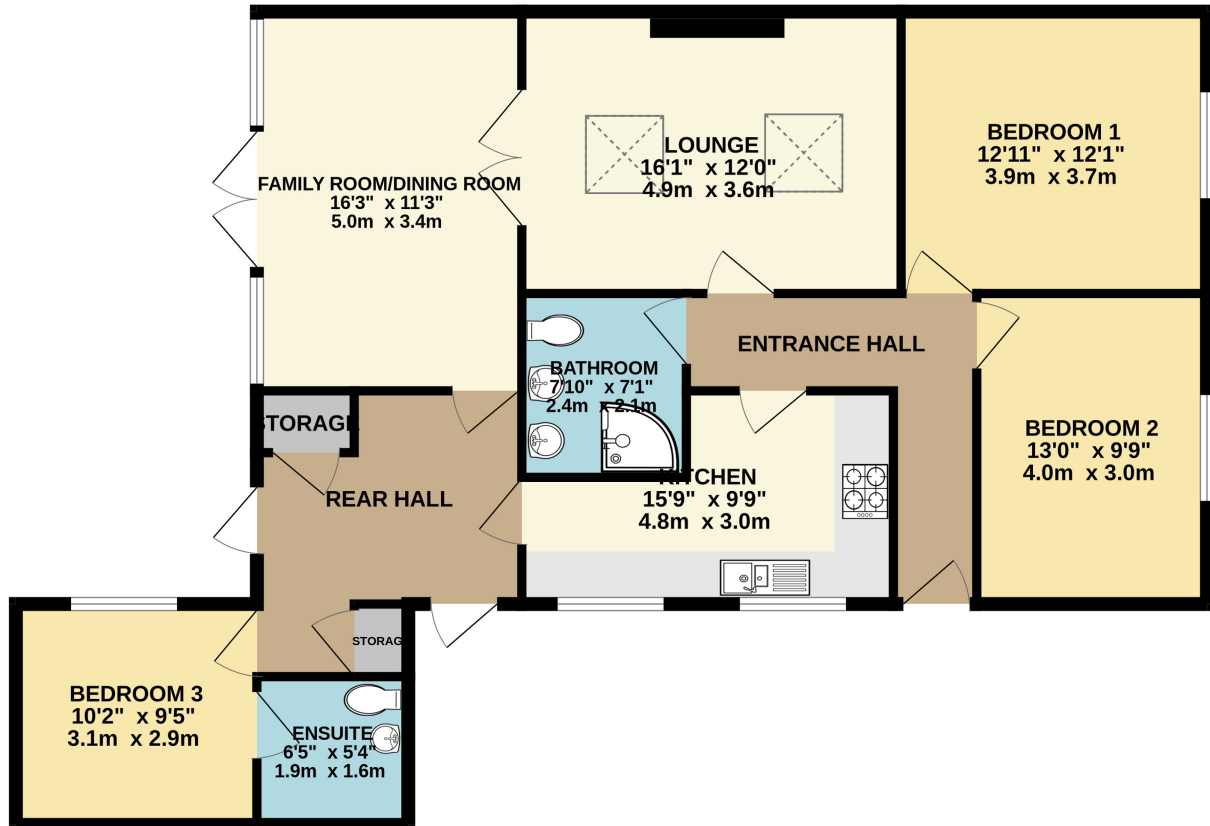


Property Images



FLOORPLAN

GROUND FLOOR 1167 sq.ft. (108.4 sq.m.) approx.



TOTAL FLOOR AREA : 1167 sq.ft. (108.4 sq.m.) approx.
Whilst every attempt has been made to ensure the accuracy of the floorplan contained here, measurements of doors, windows, rooms and any other items are approximate and no responsibility is taken for any error, omission or mis-statement. This plan is for illustrative purposes only and should be used as such by any prospective purchaser. The services, systems and appliances shown have not been tested and no guarantee as to their operability or efficiency can be given.
Made with Metropix ©2025

DISCLAIMER: Whilst Manxmove Ltd believe that these details are correct, neither Manxmove Ltd or their clients guarantee their accuracy in any way. Consequently, these details are not to be used to form part of any legally binding contract. Prospective purchasers or tenants are advised to visit this property to satisfy themselves as to the correctness of these details. Please note, we use wide angle camera lenses in order to show as much of each room as possible. This is not intended to mislead any prospective purchasers or tenants in any way and an honest verbal description is always available prior to viewing if required.