



Day & Co  
ESTATE AGENTS

28 Cavendish Street

Keighley

BD21 3RG



2 15, The Old Brewery, Prince Street, Haworth, Keighley, West Yorkshire, BD22 8LE

£199,995

T: 01535 664609

W: [www.dayandcoestateagents.co.uk](http://www.dayandcoestateagents.co.uk)

E: [keighley@dayandcoestateagents.co.uk](mailto:keighley@dayandcoestateagents.co.uk)

- EPC Rating Is C
- Fabulous Duplex Penthouse Apartment
- Spacious Dining Kitchen/Separate Lounge /Sitting Room

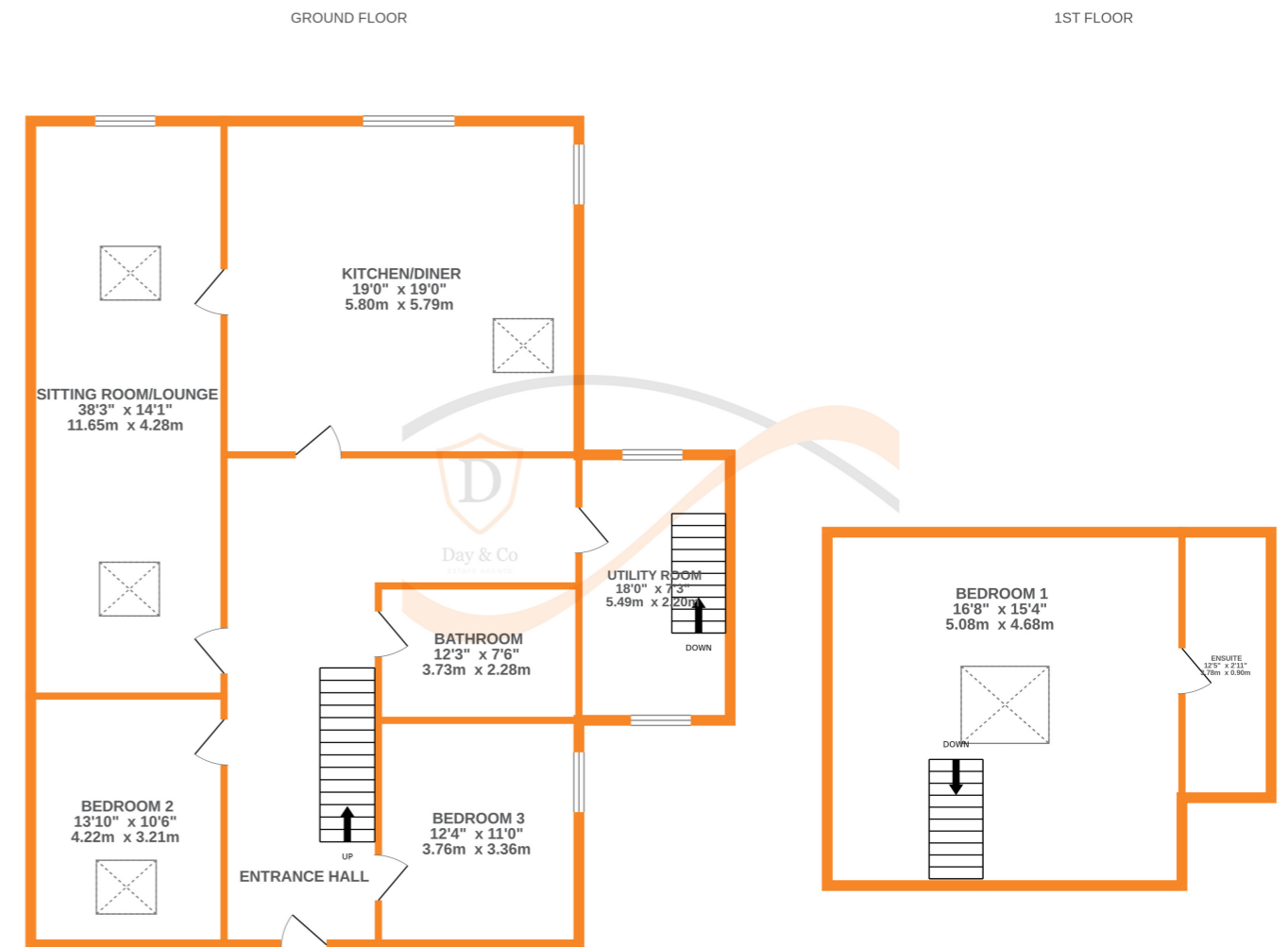
- SOLD WITH TENANT IN SITU
- Three Double Bedrooms & Master En-Suite
- Stunning Views Over Sought After Historic Village Of Haworth

## SUMMARY

**\*\*SOLD WITH TENANT IN SITU!!\*\*** A FABULOUS 3 BEDROOM DUPLEX PENTHOUSE APERTMENT, SOUGHT AFTER HISTORIC LTERARY VILLAGE OF HAWORTH WITH STUNNING VIEWS!!\*\* Having an en-suite shower room to the master bedroom as well as house bathroom, spacious dining kitchen, separate lounge/sitting room, rear patio, 3 allocated parking spaces - VIEWING ESSENTIAL TO FULLY APPRECIATE!! EPC rating is C.

## FULL DESCRIPTION

**\*\*SOLD WITH TENANT IN SITU!!\*\*** A fabulous three double bedroom duplex penthouse apartment situated in the sought after historic literary village of Haworth. The deceptively spacious accommodation comprises of an entrance hall, the spacious dining kitchen has a range of base and wall mounted units, integrated oven, hob and extractor fan, double glazed windows to the front and side and two double glazed Velux windows. The lounge/sitting room measures approximately 11.65m in length, has two double glazed Velux windows and a window to the front enjoying stunning views over Haworth village. There is a separate utility room, the house bathroom has a four piece suite comprising of a bath, shower cubicle, WC, wash hand basin. To the first floor is the master bedroom with en-suite shower room. Externally an enclosed patio and three allocated parking spaces. Viewing essential to fully appreciate, EPC rating is C.



Whilst every attempt has been made to ensure the accuracy of the floorplan contained here, measurements of doors, windows, rooms and any other items are approximate and no responsibility is taken for any error, omission or mis-statement. This plan is for illustrative purposes only and should be used as such by any prospective purchaser. The services, systems and appliances shown have not been tested and no guarantee as to their operability or efficiency can be given.  
Made with Metropix ©2024