

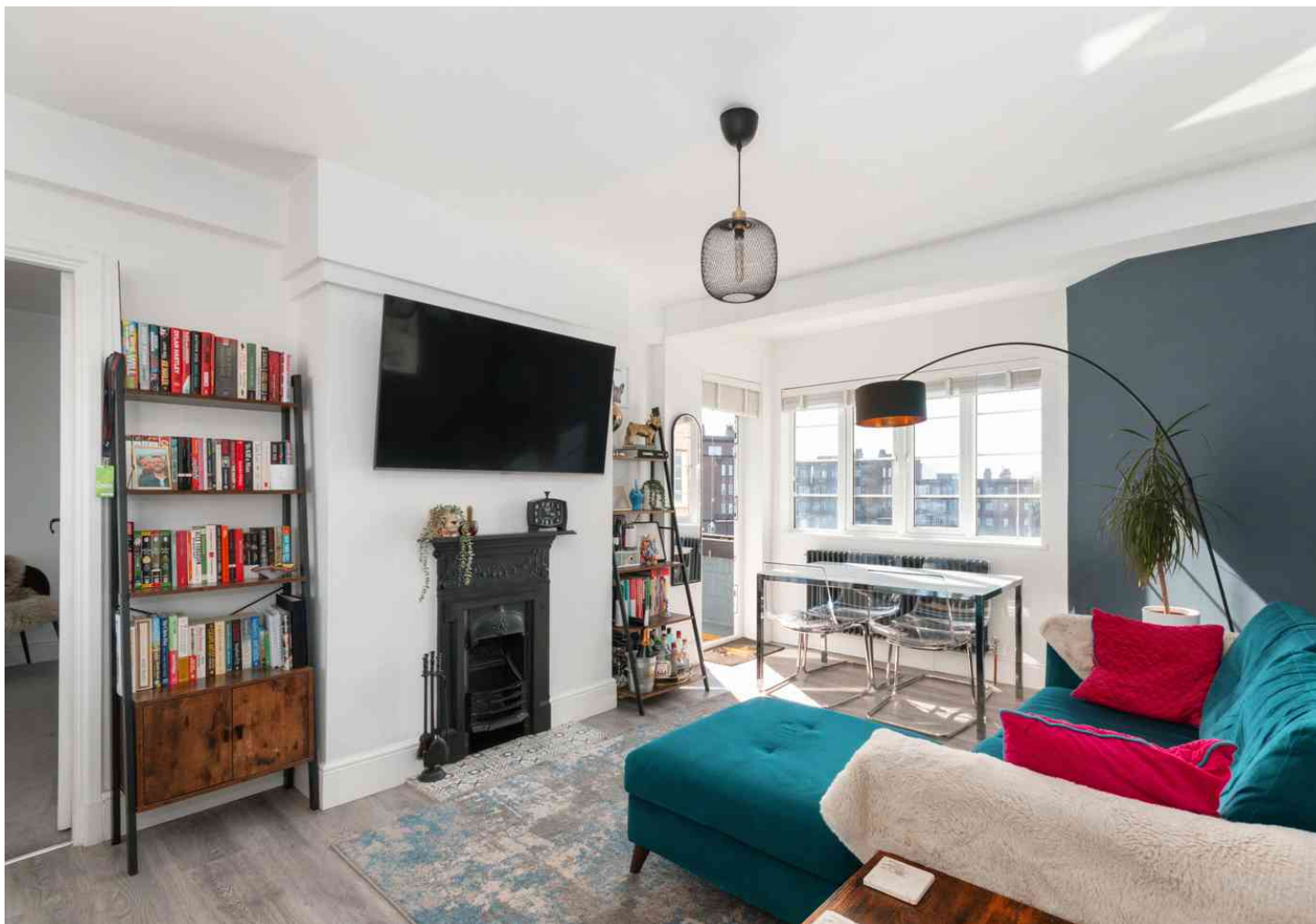
FOR SALE

Chiswick Village,
Gunnersbury, W4

Flat
Gunnersbury

£425,000 sh of fh

2  1  1 

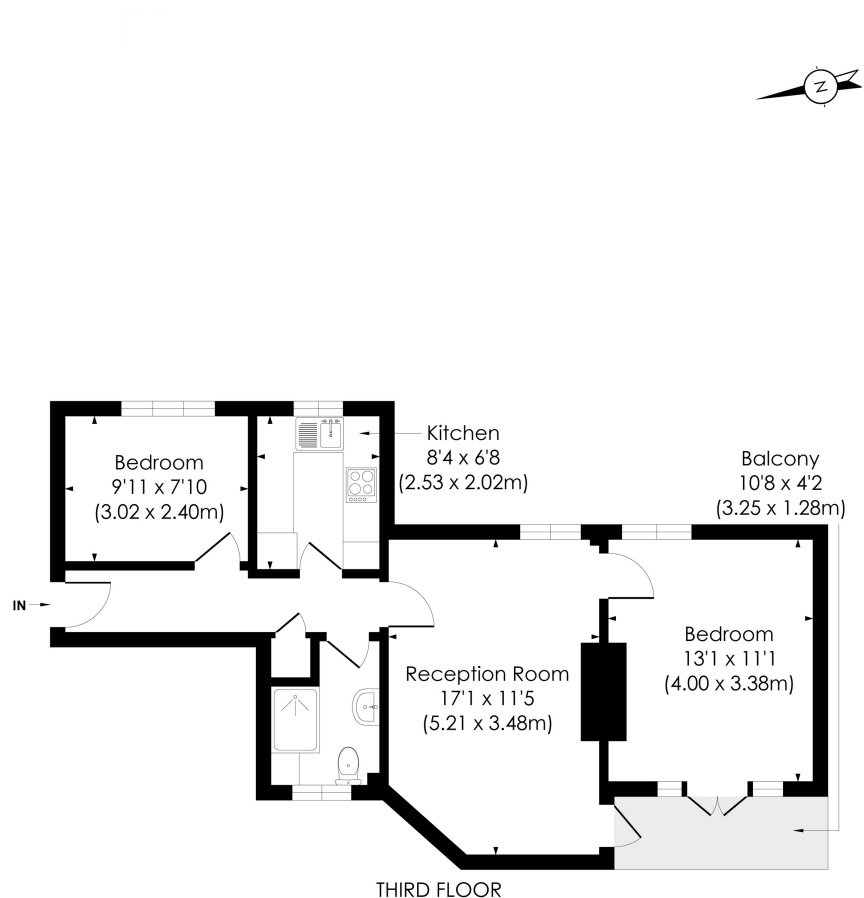


**horton
andgarton**

SALES / LETTINGS / PROPERTY MANAGEMENT

hortonandgarton.co.uk | Sales 020 3989 6464 | Lettings 020 3989 5454
161 Chiswick High Road, London, W4 2DT





CHISWICK VILLAGE, W4

Approx. Gross Internal Floor Area
594 Sq' / 55.17 SqM

**horton
andgarton**

© Pixangle Property Marketing Ltd. info@pixangle.com Tel: 0208 870 2118

This floor plan has been prepared for the purpose of illustration only in accordance with the latest RICS code of measuring practice and is not to scale. All measurements and areas are approximate and whilst every effort has been made to ensure the accuracy of the plan contained here, no responsibility is taken for any error, omission or misstatement.



Third floor purpose-built flat | Two bedrooms - One bathroom | 594 Sq' - 55.17 SqM | West facing balcony | EPC rating D | Gunnersbury



hortonandgarton.co.uk
Sales 020 3989 6464
Lettings 020 3989 5454

161 Chiswick High Road, London, W4 2DT