



Cranham Drive



Cranham Drive

Worcester

Offers in Region of £180,000

This spacious three bedroom semi-detached home offers good access to the city centre, nearby amenities as well as M5 motorway. The accommodation comprises, entrance hall, sitting room, dining room, kitchen, three bedrooms, WC and bathroom. The property further benefits from a driveway, garage, store and pleasant garden and is offered for sale with no onward chain.

We've Noticed

- **Semi-detached home**
- **Three bedrooms**
- **Two reception rooms**
- **Driveway, garage, store**
- **No onward chain**



Entrance

Through front entrance door into hall with doors into sitting room and dining room.

Sitting Room

A good size room with front aspect window and radiator.

Dining Room

With front aspect window, radiator and door into kitchen.

Kitchen

With radiator, matching wall and base units with work surfaces over, stainless steel sink and drainer with mixer tap over, wall mounted boiler, space for upright fridge/freezer as well as cooker, under stairs storage further door to pantry/storage and door leading to the rear garden.

First Floor Landing

With doors into bedrooms, bathroom, WC and airing cupboard.

Bedroom 1

With front aspect window, radiator and storage cupboard.

Bedroom 2

With front aspect window, radiator and storage cupboard.

Bedroom 3

With rear aspect window and radiator.

WC

With WC and rear aspect window.

Bathroom

With rear aspect window, wash hand basin and bath with electric shower over.

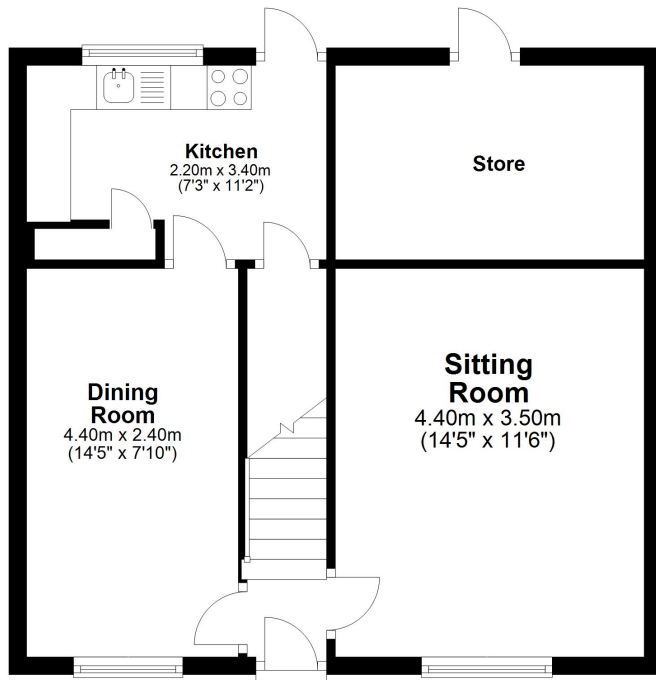
Outside

The front of the property is approached via a driveway leading to garage and pathway to entrance door.

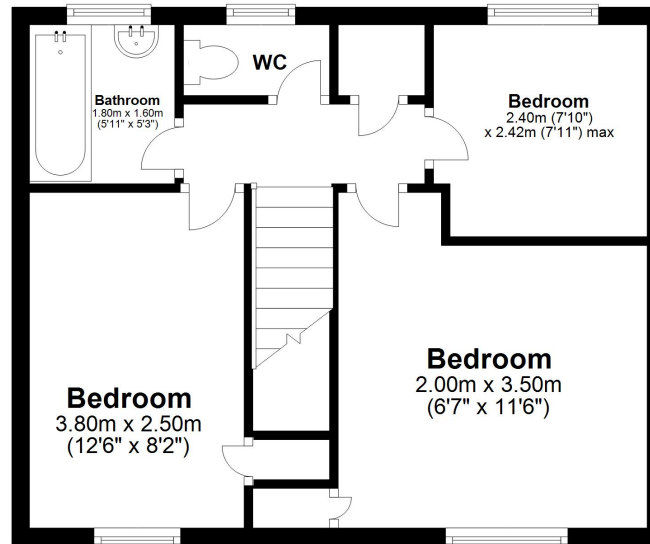
To the rear is a garden laid mostly to lawn with door accessing internal store, also with garage, shed and fenced boundaries to sides and rear.



Ground Floor



First Floor



46 Foregate Street, Worcester WR1 1EE

Tel: 01905 723545 info@hillsestateagents.co.uk

www.hillsestateagents.co.uk

These particulars, whilst believed to be accurate are set out as a general outline only for guidance and do not constitute any part of an offer or contract. Intending purchasers should not rely on them as statements or representation of fact, but must satisfy themselves by inspection or otherwise as to their accuracy. We have not carried out a detailed survey nor tested the services, appliances and specific fittings. Room sizes should not be relied upon for carpets and furnishings. The measurements given are approximate. No person in this firm's employment has the authority to make or give any representation or warranty in respect of the property.

