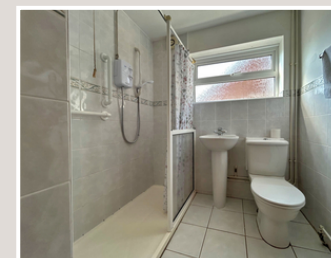


Total area: approx. 92.7 sq. metres (998.2 sq. feet)

For Illustrative Purposes Only. Not to Scale.  
Plan produced using PlanUp.



# 4 Shannon Court, Thornbury, South Gloucestershire BS35 2HN

Milburys are thrilled to offer to the market, this fabulous dormer bungalow. Situated in a cul-de-sac just a healthy stroll from Thornbury high street. Beautifully kept and well-proportioned throughout, it's quite the hidden gem! Entering through the front door into the spacious hallway. To the right, a fitted kitchen, clean and fresh, with wall and base units, space for multiple appliances and a small breakfast table. Moving on to the lounge, spacious, bright and airy with large window allowing light to flood the room, the electric fireplace finishes off the room perfectly. Continuing through the property, the family bathroom is on your left, with walk in shower, basin and w/c, again, all well kept. The ground floor double bedroom benefits from fitted wardrobes and large understairs storage cupboard. The dining room/bedroom 3 can be found at the rear of the property allowing access to the enclosed rear garden. To the first floor, a further double bedroom with an en-suite bathroom with shower over bath. Externally, to the front, paved driveway for two vehicles and large lawn area and to the rear a fabulous enclosed rear garden with patio and shed. Call to day to arrange your tour. NO CHAIN!!

## Situation

Thornbury is a thriving market town to the north of the City of Bristol and the M4/M5 interchange, with excellent commuting links via the motorway network and by rail from Bristol Parkway Station (Paddington/South Wales). The High Street offers a wide variety of shops, cafes, pubs and restaurants. Other facilities include the leisure centre, golf course and library, plus open community spaces, parks and sports grounds/clubs. The town is blessed with a number of primary and junior schools, plus The Castle secondary school ([www.thecastleschool.org.uk](http://www.thecastleschool.org.uk)) which is situated close to Thornbury's Tudor Castle, a luxury hotel.

## Property Highlights, Accommodation & Services

- 2/3 Bedroom Semi-Detached Dormer Bungalow
- Spacious Lounge With Attractive Electric Fireplace
- Fitted Kitchen (Appliances Can Remain If Required)
- Dining Room/Bedroom 3 With Access To Enclosed Rear Garden
- First-Floor Bedroom With En-Suite
- Ground Floor Double Bedroom With Fitted Wardrobes And Storage Cupboard
- Large Rear Garden Laid Mainly To Lawn And Patio
- Easy Access To The Rear Open Green Space
- Block Paved Driveway for Two Vehicles
- Within Easy Reach Of Thornbury High Street, Local Schools And The A38 At Grovesend.

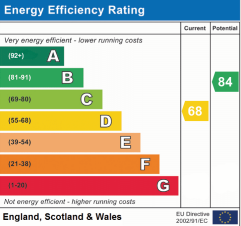
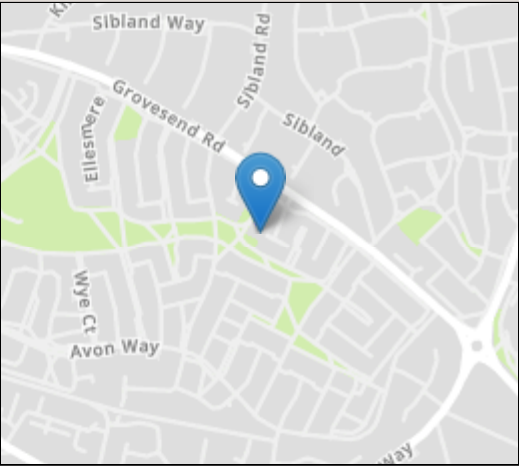
## Directions

Driving along Grovesend Road toward Thornbury, take your second left into Shannon Court and the property can be found on your right hand side.

**Local Authority & Council Tax** - South Gloucestershire Council - Tax Band D

**Tenure** - Freehold

**Contact & Viewing** - Email: [mil\\_thornburysales@milburys.co.uk](mailto:mil_thornburysales@milburys.co.uk) Tel: 01454 417336



IMPORTANT NOTICE Milburys Estate Agents Ltd, their clients and any joint agents give notice that they have not tested any apparatus, equipment, fixtures, fittings, heating systems, drains or services and so cannot verify they are in working order or fit for their purpose. Interested parties are advised to obtain verification from their surveyor or relevant contractor. Statements pertaining to tenure are also given in good faith and should be verified by your legal representative. Digital images may, on occasion, include the use of a wide angle lens. Please ask if you have any queries about any of the images shown, prior to viewing. Where provided, floor plans are shown purely as an indication of layout. They are not scale drawings and should not be treated as such. Complete listings and full details of all our properties (both for sale and to let) are available at [www.milburys.co.uk](http://www.milburys.co.uk)







[www.milburys.co.uk](http://www.milburys.co.uk)