





Wheatcroft Drive, Ambergate, Belper, Derbyshire DE56 2NE
£420,000 - Freehold

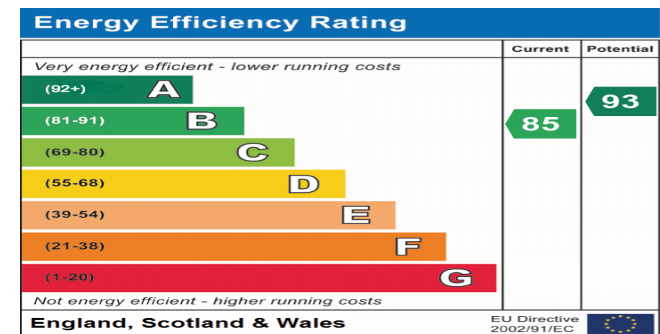


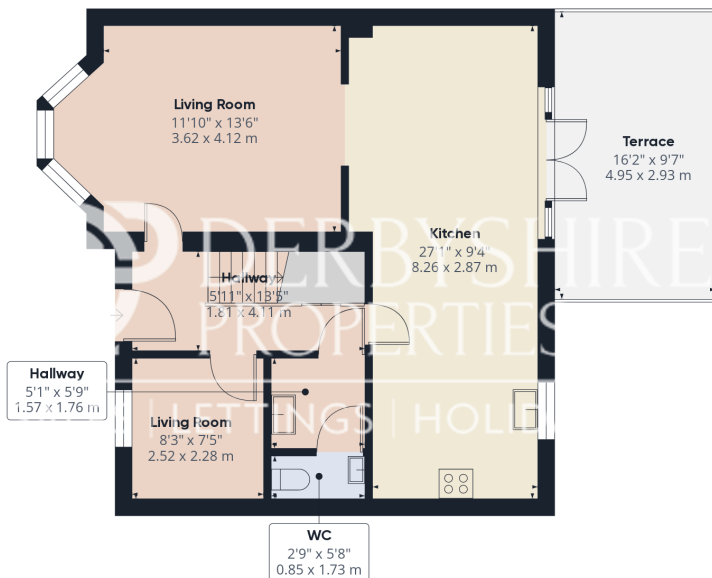
PROPERTY DESCRIPTION

Derbyshire Properties are delighted to introduce for sale this superb four bedroom detached family home located within a popular residential area. The property is approximately two years old and was originally constructed by 'Peter James Homes'. The property briefly comprises of:- spacious entrance hall, study, utility room, cloakroom/WC, open-plan living kitchen and living room. To the first floor:-the landing provides access to 4 double bedrooms, family bathroom, and en-suite to master bedroom. Externally the property benefits from a superb landscaped rear garden, offering private and social spaces with external canopy and seating area. We believe an early internal inspection should be undertaken to avoid disappointment.

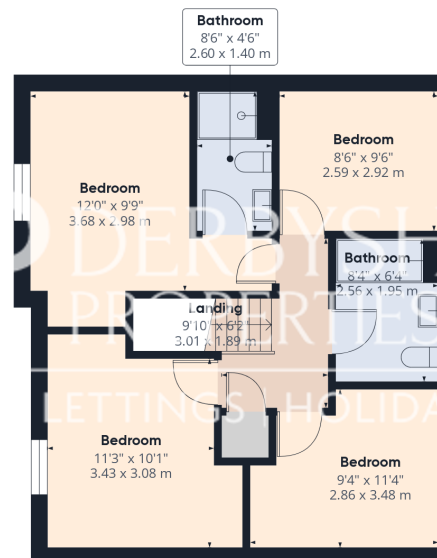
POINTS OF INTEREST

- Superb Modern Detached Home
- 4 Double Bedrooms
- Open Plan Living Kitchen
- Utility Room & Cloakroom/WC
- Private & Landscaped Rear Garden
- En-Suite Shower Room
- Driveway & Garage
- Popular Residential Location
- View Absolutely Essential!
- COUNCIL TAX BAND E





Ground Floor Building 1



Floor 1 Building 1



Ground Floor Building 2

Approximate total area⁽¹⁾

1467.24 ft²
136.31 m²

Balconies and terraces

155.97 ft²
14.49 m²

(1) Excluding balconies and terraces

While every attempt has been made to ensure accuracy, all measurements are approximate, not to scale. This floor plan is for illustrative purposes only.

Calculations are based on RICS IPMS 3C standard.

GIRAFFE360