

315 Vicarage Farm Road,
Hounslow, TW5 0DR

Tel: 02085707900
gavin@bluestateagents.co.uk



**Broad Walk, Hounslow, Greater London,
TW5 9AB**

£649,950 Freehold

- Four Bedroom Semi-Detached House
- Total Floor Area: 1663 Sq.ft. (approx.)
- Located on a Quiet Residential Road
- Two Bathroom Suites
- Garden Length 100ft Approx.
- Scope To Extend (STPP)
- Large Through Lounge and Separate Kitchen
- Side Garage
- Contact Blue Estate Agents to Book Your Viewing Today
- EPC Rating





Blue Estate Agents bring to market, as sole selling agents, a highly desirable four bedroom, semi-detached family home, located on one of Heston's most premier roads. This spacious property has ample living space and natural light throughout. Boasting over 1650 sq ft floor area, the property consists of a large through lounge, separate kitchen and ground floor shower suite. The ground floor is complete with a front garage. Upstairs, the property benefits from four bedrooms (three doubles and a very spacious single) and a family bathroom suite. Outside, the property has an exceptionally large rear garden in excess of 100ft in length and off street parking is available for up to two cars. Further benefits include, double glazed windows, combi-boiler and the potential to extend to the rear, side (first floor) and loft, all require relevant planning permissions.

The property is located on Broad Walk, TW5, a highly desirable location within Heston. Local amenities as well as reputable schools can be found within a short walk from the property. For commuters, the property provides easy access in to the city from Hounslow West Tube Station as well as easy access to major road links, such as the A4 and M4.

For further information, or to book a viewing, please contact Blue Estate Agents.

Lounge/Diner

3.79m x 9.50m (12' 5" x 31' 2")

Kitchen/Breakfast Room

4.29m x 3.40m (14' 1" x 11' 2")

Shower Room

2.40m x 1.26m (7' 10" x 4' 2")

Garage

(Not Measured)

Bedroom One

3.79m x 4.92m (12' 5" x 16' 2")

Bedroom Two

3.79m x 4.46m (12' 5" x 14' 8")

Bedroom Three

3.08m x 3.22m (10' 1" x 10' 7")

Bedroom Four

Bathroom

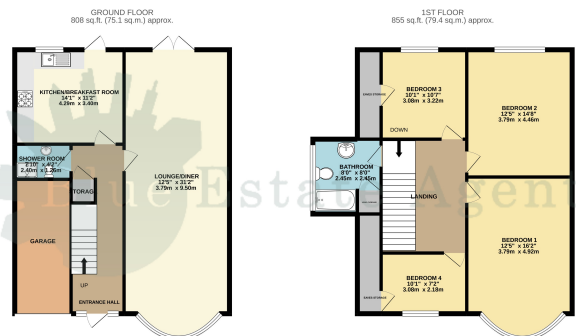
2.45m x 2.45m (8' 0" x 8' 0")

Garden

Approx Length 100 ft.

Disclaimer

Whilst we have endeavoured to prepare our sales particulars accurately none of the services, appliances or equipment have been tested. A buyer should satisfy themselves on such matters prior to purchase. Any measurements or distances mentioned in these particulars are for guide reference only. If such particulars are fundamental to a purchase, buyers should rely on their own enquiries. All enquiries should be directed to Blue Estate Agents in the first instance.



TOTAL FLOOR AREA: 1663 sq ft. (154.5 sq.m.) approx.
 Whilst every effort has been made to ensure the accuracy of the figures contained here, measurements of areas, volumes, lengths and other data are not guaranteed and do not constitute a contract for any specific purpose. The actual, written and spoken words from the seller shall prevail over the printed words. The actual, written and spoken words from the seller shall prevail over the printed words. The actual, written and spoken words from the seller shall prevail over the printed words.