



6 Lowick Place, Emerson Valley, Milton Keynes, Buckinghamshire, MK4 2LP

£310,000 Freehold

- 3 bedroom
- large rear garden
- semi detached house
- open plan lounge and modern kitchen
- Off road parking for 2 vehicles
- EPC Rating

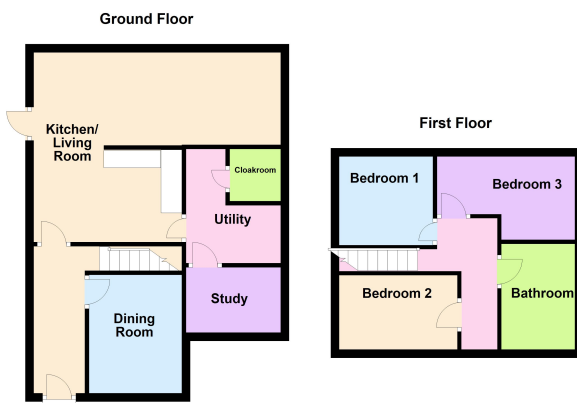




Elevation are delighted to introduce this spacious extended three-bedroom semi-detached home located in the highly popular area of Emerson Valley. The ground floor comprises of a spacious entrance hall a separate dining room, a modern open plan kitchen with an extended living room with access to the rear garden. The garage has been converted into a lovely utility room with downstairs toilet and a study . The first floor comprises of three large bedrooms and modern refitted family bathroom. This property also offers off road parking and a well maintained rear and front garden. This property would make an ideal investment or family home. Please call the Elevation team today to arrange a highly recommended viewing.

Disclaimer

Whilst we have endeavoured to prepare our sales particulars accurately none of the services, appliances or equipment have been tested. A buyer should satisfy themselves on such matters prior to purchase. Any measurements or distances mentioned in these particulars are for guide reference only. If such particulars are fundamental to a purchase, buyers should rely on their own enquiries. All enquiries should be directed to Elevation Estate Agents in the first instance.



Floor plans are for layout purposes only
Plan produced using PlanUp.