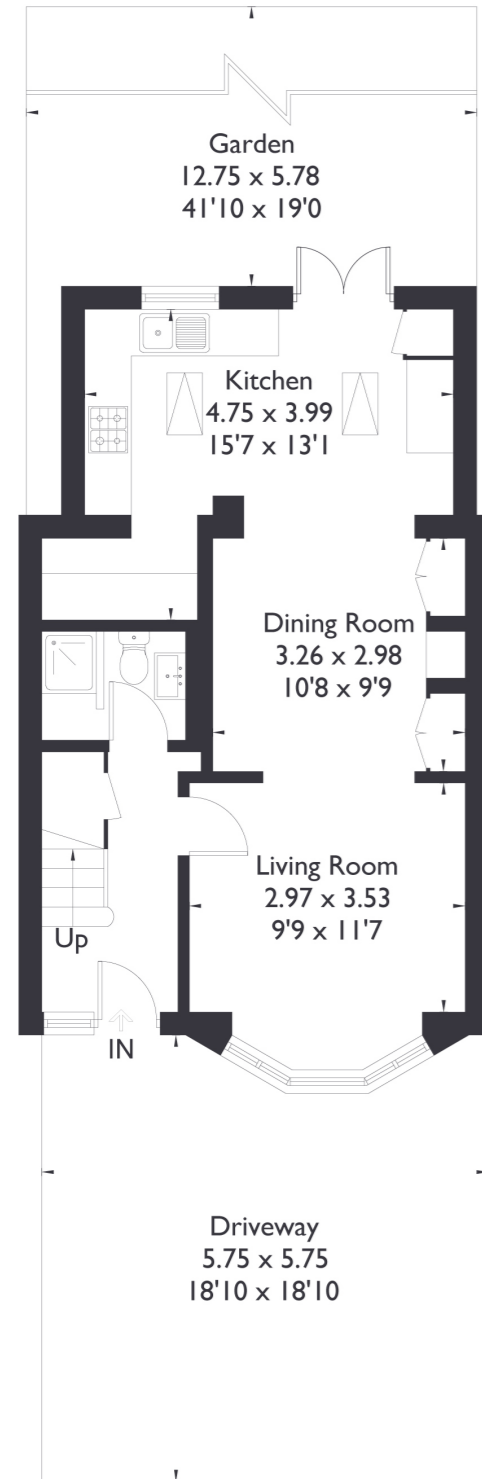
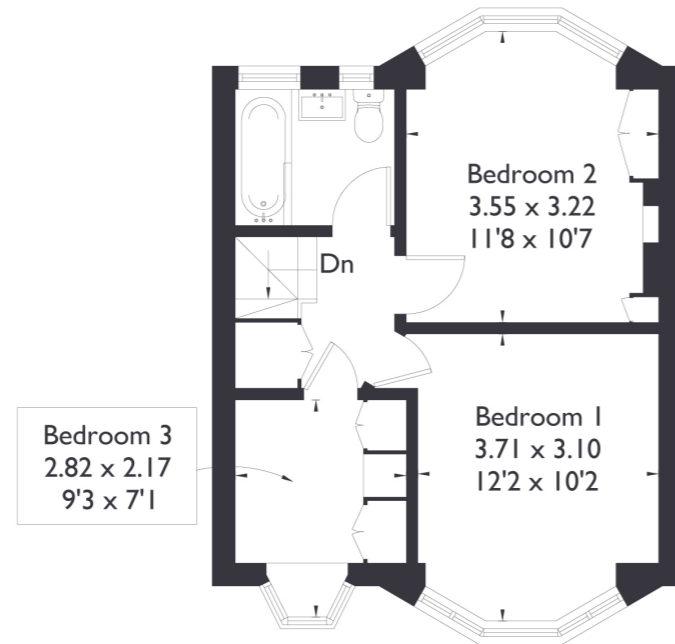


Sarsfield Road, Perivale Greenford, UB6

Approximate Floor Area = 85.2 sq m / 917 sq ft



Ground Floor



First Floor



3 BEDROOM HOUSE

Sarsfield Road, UB6

£650,000

Welcome to this beautifully presented three bedroom, two bathroom home. The property features a spacious reception room that seamlessly flows into an open plan kitchen and dining area, which opens out to a generously sized garden perfect for outdoor living and entertaining. Upstairs, you'll find three well proportioned bedrooms and a family bathroom.

FEATURES

- Three Bedrooms
- One Bathroom/Downstairs W/C
- Open Plan Kitchen Living Space
- Driveway For Two Cars
- Perivale Station (Central Line)
- Potential To Extend (STPP)
- EPC Rating C



3 BEDROOM HOUSE

Sarsfield Road, UB6

With the potential to extend, this home offers fantastic opportunities for future growth.

Located just a 10 minute walk from Perivale Station, the property enjoys excellent transport links and easy access to the A40 into London. Additionally, there are plenty of local amenities nearby, making it a convenient and desirable location. EPC Rating C.

