



BarrettMove



7 Kingsley Drive, Marlow, Buckinghamshire SL7 3QR
£625,000 - Freehold



PROPERTY SUMMARY

Barrett Move is delighted to market this three bedroom, end terrace property offering open plan living in a quiet cul de sac in Marlow Bottom.

POINTS OF INTEREST

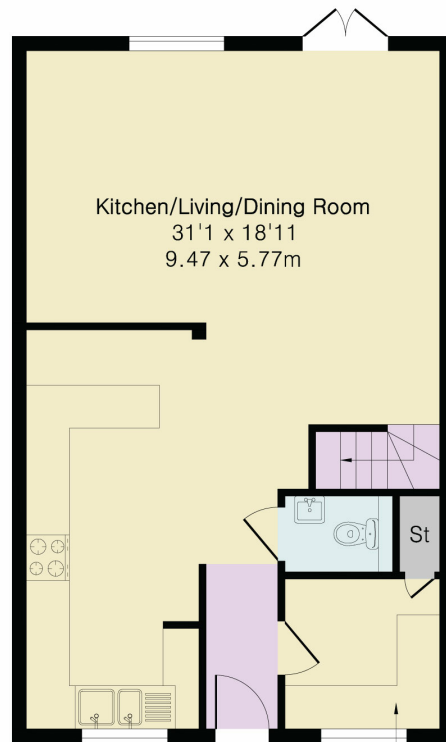
- Open plan kitchen, diner and lounge
- Utility room
- Three double bedrooms
- Master with ensuite bathroom
- Modern feel and layout
- Loft for storage
- A few mins walk to Burford School
- Close to village amenities and woodland walks
- Off street parking
- Highly recommended for viewing



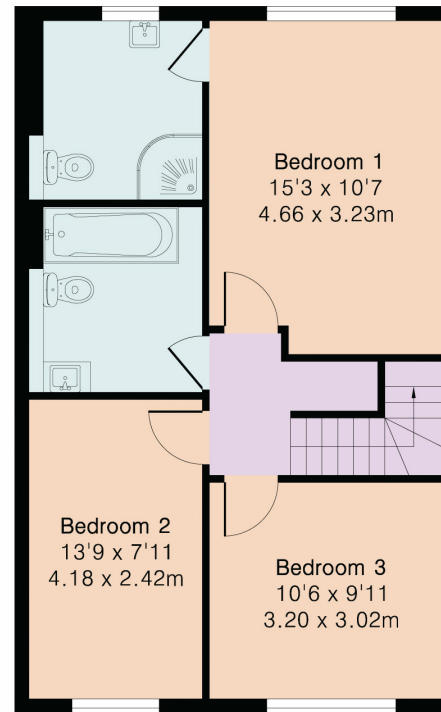
Approximate Gross Internal Area 1176 sq ft - 110 sq m

Ground Floor Area 588 sq ft – 55 sq m

First Floor Area 588 sq ft – 55 sq m



Ground Floor



First Floor



Floor plan produced in accordance with RICS Property Measurement 2nd Edition. Although Pink Plan Ltd ensures the highest level of accuracy, measurements of doors, windows and rooms are approximate and no responsibility is taken for error, omission or misstatement. These plans are for representation purposes only and no guarantee is given on the total square footage of the property within this plan. The figure icon is for initial guidance only and should not be relied on as a basis of valuation.

Energy Efficiency Rating		Current	Potential
Very energy efficient - lower running costs			
(92+)	A		
(81-91)	B		
(69-80)	C	75	80
(55-68)	D		
(39-54)	E		
(21-38)	F		
(1-20)	G		
Not energy efficient - higher running costs			
England, Scotland & Wales			
EU Directive 2002/91/EC			