



philip
INDEPENDENT
ESTATE
AGENT
jarvis



3 Chippendayle Drive, Harrietsham, Maidstone, Kent. ME17 1AD.

£385,000 Freehold

Property Summary

"This home is presented to such a high standard throughout, it was like a show home from top to bottom". - Matthew Gilbert, Branch Manager.

Presenting to the market this fantastic three bedroom semi detached home situated in a cul-de-sac position within the popular commuter village of Harrietsham.

To the ground floor the property comprises of an entrance hall, open plan kitchen/dining room, large utility room, lounge with feature bay window and cloakroom.

To the first floor there is a master bedroom with an ensuite, two further bedrooms and a family bathroom.

Externally there is a driveway and storage area whilst to the rear there is a smart enclosed garden.

Harrietsham is an incredibly popular village boasting a primary school, two shops, post office and Gastro pub. There are great travel links within access to the M20 and a mainline railway station to London Victoria.

A home so well presented rarely comes available so please book a viewing without delay.

Features

- Three Bedroom Semi Detached Home
- Ensuite To Master Bedroom
- Utility Room
- Cul-De-Sac Position
- Council Tax Band D
- Beautifully Presented
- Downstairs Cloakroom
- Open Plan Kitchen/Diner
- EPC Rating: D

Ground Floor

Front Door To

Hall

Stairs to first floor with cupboard underneath. Radiator. Wall mounted thermostat.

Kitchen/Dining Room

16' 8" x 10' 8" (5.08m x 3.25m) Double glazed window to rear. Double glazed French doors to rear. Range of base and wall units. Stainless steel sink unit and drainer. Localised tiling. Integrated dishwasher/ Electric oven. Gas hob with extractor over and under counter fridge. Radiator.

Utility Room

Double glazed door to rear access. Range of wall units. Stainless steel sink and drainer. Localised tiling. Door to storage area. TV point. Radiator.

Lounge

13' 3" x 10' 3" (4.04m x 3.12m) Double glazed bay window to front. TV & BT point. Radiator.

Cloakroom

Double glazed frosted window to front. Low level WC, wash basin with splash back tiling. Chrome heated towel rail.

First Floor

Landing

Double glazed window to side. Cupboard housing gas boiler. Hatch to loft access.

Bedroom One

10' 11" x 9' 9" (3.33m x 2.97m) Double glazed window to rear. Radiator. TV point.

Ensuite

Suite comprising of low level WC, wash hand basin and shower cubicle with glass door. Localised tiling. Extractor. Chrome heated towel rail.

Bedroom Two

10' 5" x 9' 8" (3.17m x 2.95m) Double glazed bay window window to front. Radiator.

Bedroom Three

8' 3" x 6' 8" (2.51m x 2.03m) Double glazed window to rear. Radiator.

Bathroom

Double glazed obscured window to front. Suite comprising of low level WC, wash hand basin and panelled bath with shower attachment and glass screen. Localised tiling. Chrome heated towel rail. Extractor.

Exterior

Front

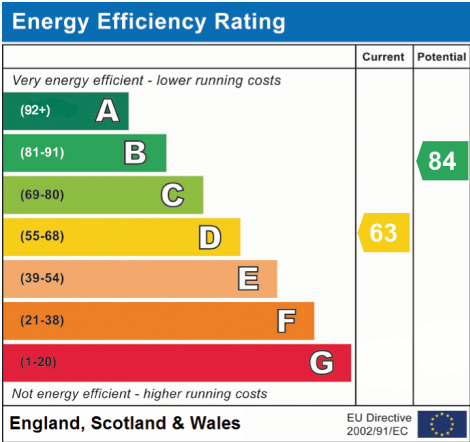
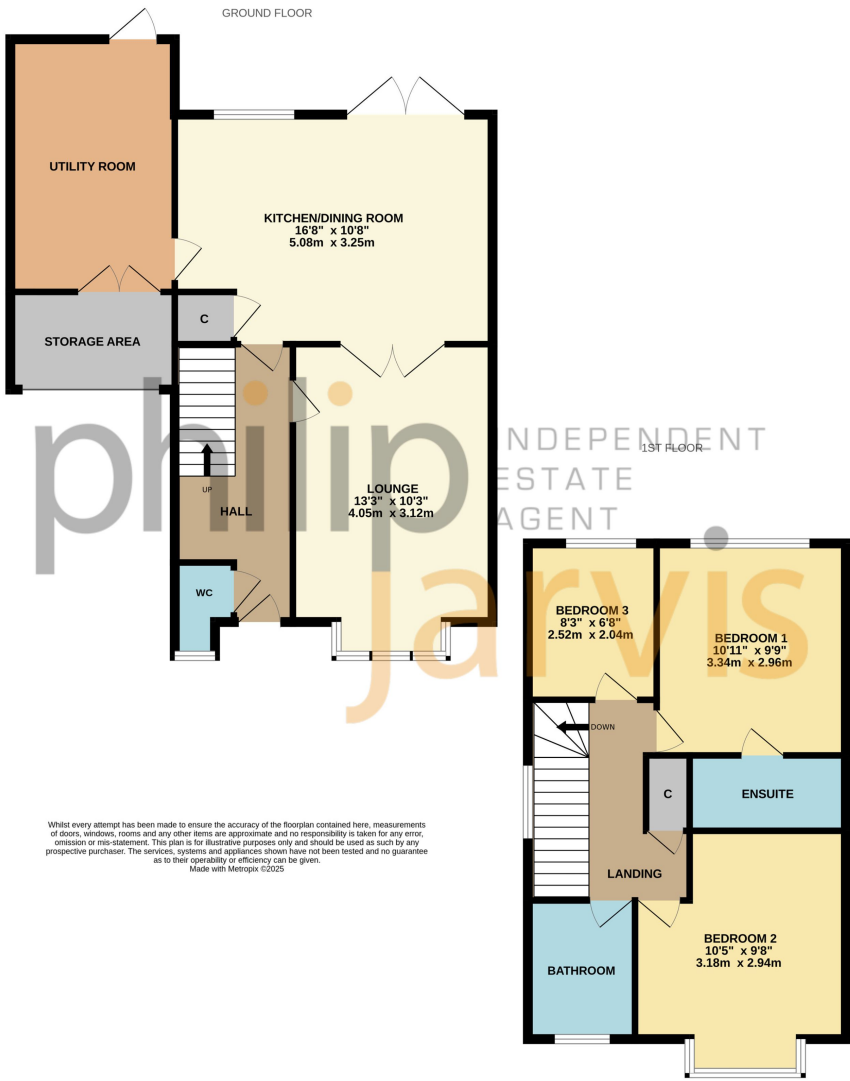
Shrubs and bushes to front borders. Block paved area. Outside light. Bin store.

Driveway

Parking for one/two vehicles.

Rear Garden

Mainly laid to lawn. Mature shrubs, plants and trees. Large paved patio area. Outside lights. Outside tap.



Viewing Strictly By Appointment With



Please Note: All dimensions are approximate and quoted for guidance only. Reference to appliances and/or services does not imply they are necessarily in working order or fit for purpose. interested parties are advised to obtain verification from their solicitors as to the freehold/leasehold status of the property, the position regarding any fixtures and fittings and where the property has been extended/converted as to Planning Approval and Building Regulations compliance. These particulars do not constitute or form part of an offer or contact, nor may they be regarded as representations. All interested parties must themselves verify their accuracy. Where a room layout or virtual tour included this is for the general guidance only. it is not to scale and its accuracy cannot be confirmed.

