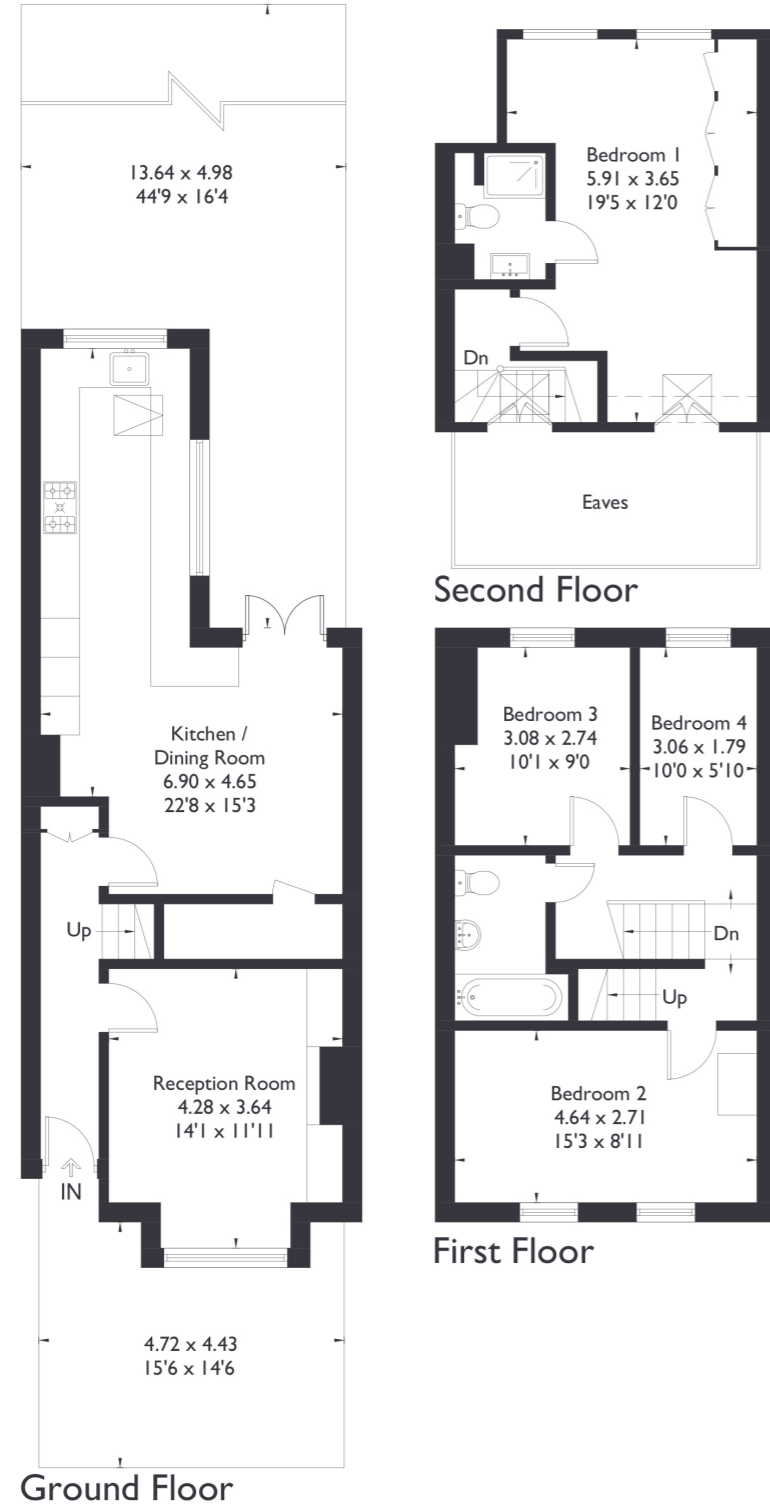


Sunderland Road ,W5

Approximate Floor Area = 117.0 sq m / 1259 sq ft



4 BEDROOM HOUSE

Sunderland Road, W5

£1,095,000

Welcome to this charming four bedroom, two bathroom home, ideally situated in the heart of South Ealing. The property features a separate reception room and a spacious dining room, while the kitchen opens up to a delightful, south facing garden.

Lovingly and skilfully looked after, it is the perfect family home.

FEATURES

- Four Bedrooms
- Two Bathrooms
- Separate Reception Room
- South Ealing Amenities
- Grange Primary School
- South Ealing Station
- EPC Rating C



4 BEDROOM HOUSE

Sunderland Road, W5

Upstairs on the first floor you'll find three bedrooms generously sized, offering plenty of flexibility to suit your lifestyle needs.

On the top floor you'll meet the primary en-suite. The home boasts a blend of original character and contemporary design, with light flowing beautifully throughout every room.

Conveniently located just a five-minute walk from South Ealing station, the property also offers excellent transport links to Central London as well as easy access to the A4 for those traveling by car.

EPC Rating C.

