



**1 Bulmer Close, Broughton, Milton Keynes,
Buckinghamshire, MK10 9LG**

£340,000 Freehold

- Three bedroom
- Single Garage and Driveway
- Refitted en-suite and Kitchen
- Conservatory
- local amenities within walking distance
- Desirable and highly sought-after location
- Perfect family home
- EPC Rating





GROUND FLOOR

Kitchen

5.24m x 2.47m (17' 2" x 8' 1")

Living room

3.23m x 5.58m (10' 7" x 18' 4")

Conservatory

2.81m x 2.13m (9' 3" x 7' 0")

FIRST FLOOR

Bedroom three

2.55m x 2.64m (8' 4" x 8' 8")

Bedroom two

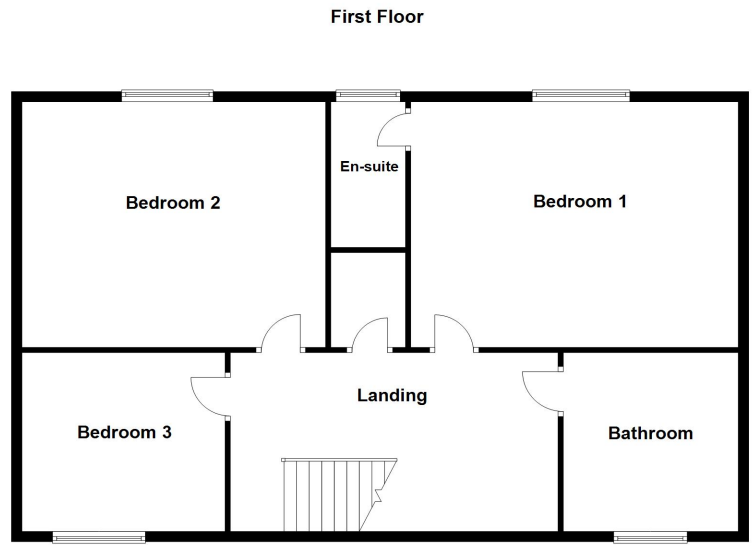
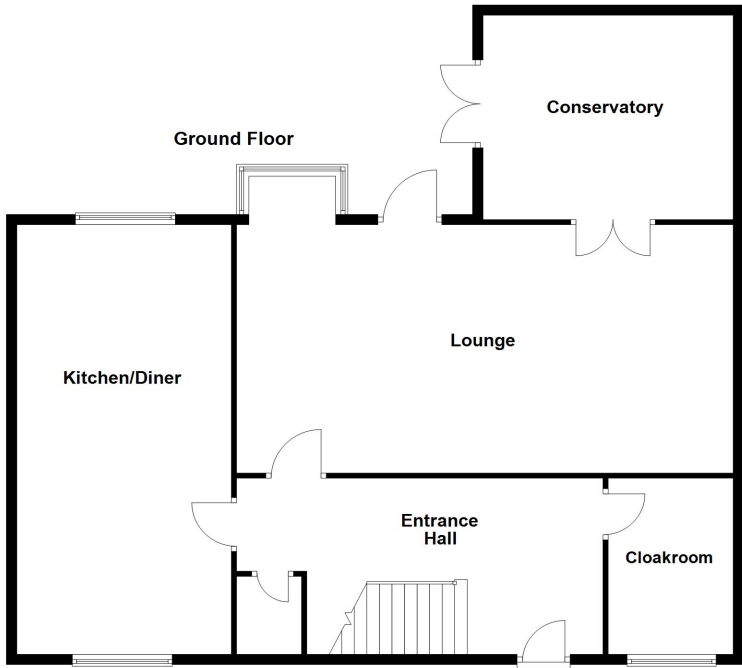
3.45m x 2.66m (11' 4" x 8' 9")

Bedroom one

3.80m x 3.22m (12' 6" x 10' 7")

Disclaimer

Whilst we have endeavoured to prepare our sales particulars accurately none of the services, appliances or equipment have been tested. A buyer should satisfy themselves on such matters prior to purchase. Any measurements or distances mentioned in these particulars are for guide reference only. If such particulars are fundamental to a purchase, buyers should rely on their own enquiries. All enquiries should be directed to Elevation Estate Agents in the first instance.



Floor plans are for layout purposes only. Measurements are approximate and subject to inaccuracies
Plan produced using PlanUp.