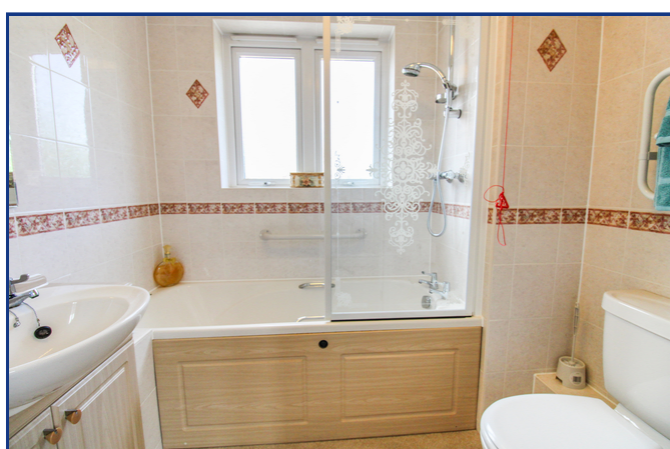


Flat 24, 405-411 Stevens Court, Reading Road,
Winnersh, Wokingham, Berkshire. RG41 5GU.



3 Maiden Lane Centre
Berkshire
Reading RG6 3HD
Tel: 0118 926 8260
www.arins.co.uk



Flat 24, 405-411 Stevens Court, Reading Road,
Winnersh, Wokingham, Berkshire. RG41 5GU.

£190,000 Leasehold

This spacious first floor apartment is located in the centre of Winnersh, within walking distance of local amenities and Sainsbury's supermarket. Stevens Court comprises 35 properties arranged over 3 floors each served by lift. The Development Manager can be contacted from various points within each property in the case of an emergency. Built specifically for the over 60's, this retirement development provides communal lounge and kitchen, laundry room well maintained communal gardens, residents parking. The spacious apartment comprises entrance hall with two large storage cupboards, a 24ft lounge/dining room, modern kitchen, two large double bedrooms and a bathroom. Residents must be over the age of 60 years, or in the event of a couple, one must be over 60 years and the other over 55 years. Please enquire for more information.

- Over 60's Only
- Pleasant Communal Gardens
- Two Double Bedrooms
- Lift Access
- Residents' Communal Lounge & Kitchen
- Laundry Room
- Residents Parking
- Guest Suite Available
- 24hr Emergency Call Monitoring Service

These particulars, whilst believed to be accurate are set out as a general outline only for guidance and do not constitute any part of an offer or contract. Intending purchasers should not rely on them as statements or representation of fact, but must satisfy themselves by inspection or otherwise as to their accuracy. We have not carried out a detailed survey nor tested the services, appliances and specific fittings. Room sizes should not be relied upon for carpets and furnishings. The measurements given are approximate. No person in this firm's employment has the authority to make or give any representation or warranty in respect of the property.



Covering Reading, Earley, Lower Earley, Tilehurst, Woodley, Shinfield, Caversham and all other surrounding areas

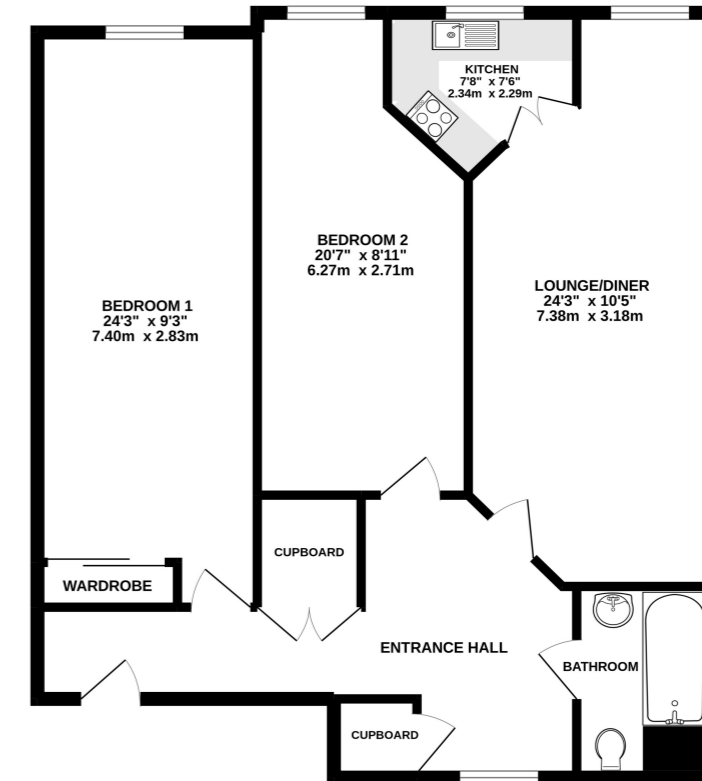
Flat 24, 405-411 Stevens Court, Reading Road,
Winnersh, Wokingham, Berkshire. RG41 5GU.



Have you visited our website for our latest property listings?
www.arins.co.uk



GROUND FLOOR
894 sq.ft. (83.1 sq.m.) approx.



TOTAL FLOOR AREA: 894 sq.ft. (83.1 sq.m.) approx.
Whilst every attempt has been made to ensure the accuracy of the floorplan contained here, measurements of doors, windows, rooms and any other items are approximate and no responsibility is taken for any error, omission or mis-statement. This plan is for illustrative purposes only and should be used as such by any prospective purchaser. The services, systems and appliances shown have not been tested and no guarantee as to their operability or efficiency can be given.
Made with MyPlanMyFloor.com

Property Description

First Floor

Entrance Hall

Lounge/Dining Room

10' 11" x 24' 3" (3.33m x 7.39m)

Kitchen

7' 8" x 7' 6" (2.34m x 2.29m)

Bedroom One

9' 3" x 24' 3" (2.82m x 7.39m)

Bedroom Two

8' 11" x 20' 7" (2.72m x 6.27m)

Bathroom

Leasehold Information

Ground rent - £230 paid twice yearly.
Service Charge - £2,358.16 paid twice yearly.

Council Tax Band

C

