



22 Sweeps Ditch Close, Staines-upon-Thames, Surrey. TW18 2RU.
1 Bedroom Apartment - £235,000 Leasehold

22 Sweeps Ditch Close, Staines-upon-Thames, Surrey. TW18 2RU.

01784 451458

1 Bedroom Apartment - £235,000 Leasehold

WITH GARAGE | WELL PRESENTED & SPACIOUS ONE BEDROOM APARTMENT SITUATED IN THIS SMALL PURPOSE BUILT DEVELOPMENT IDEALLY LOCATED FOR EASY ACCESS TO STAINES TOWN CENTRE, LOCAL MOTORWAY NETWORKS, HEATHROW AIRPORT & THE RIVER THAMES. The property benefits from a spacious lounge/diner, separate modern fitted kitchen, large double bedroom, modern white bathroom suite, well kept communal gardens and garage. No Onward Chain. Viewings Highly Recommended!

Key Features

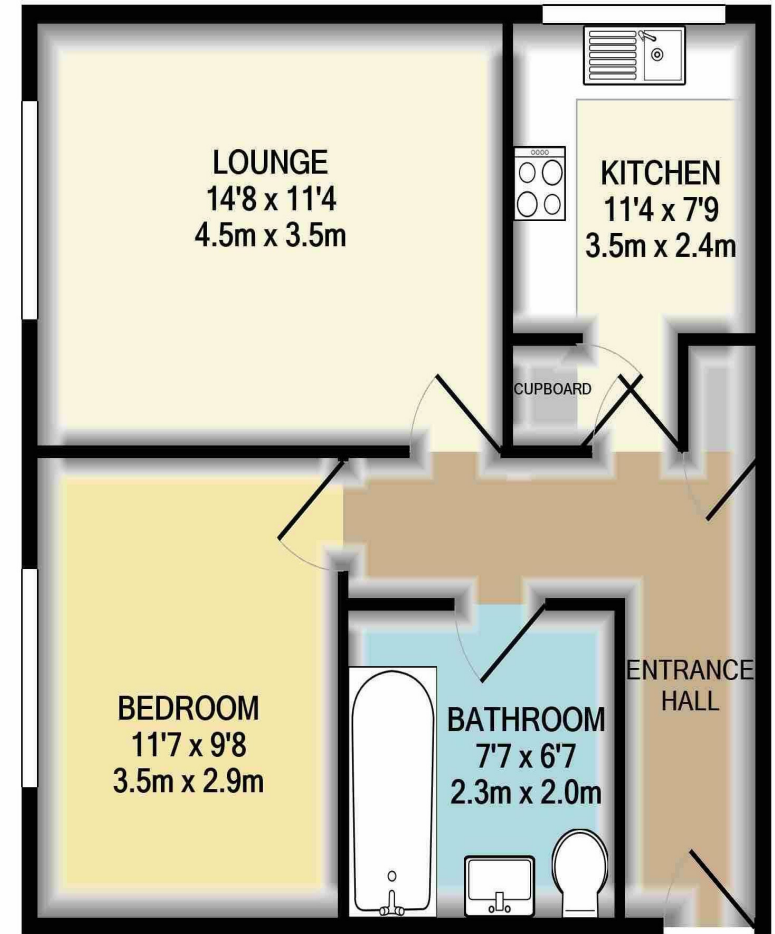
GARAGE

SMALL PURPOSE BUILT DEVELOPMENT

EASY ACCESS TO STAINES TOWN CENTRE & MAINLINE TRAIN STATION

NO ONWARD CHAIN

IDEAL FOR LOCAL MOTORWAY NETWORKS & HEATHROW AIRPORT



TOTAL APPROX. FLOOR AREA 542 SQ.FT. (50.3 SQ.M.)

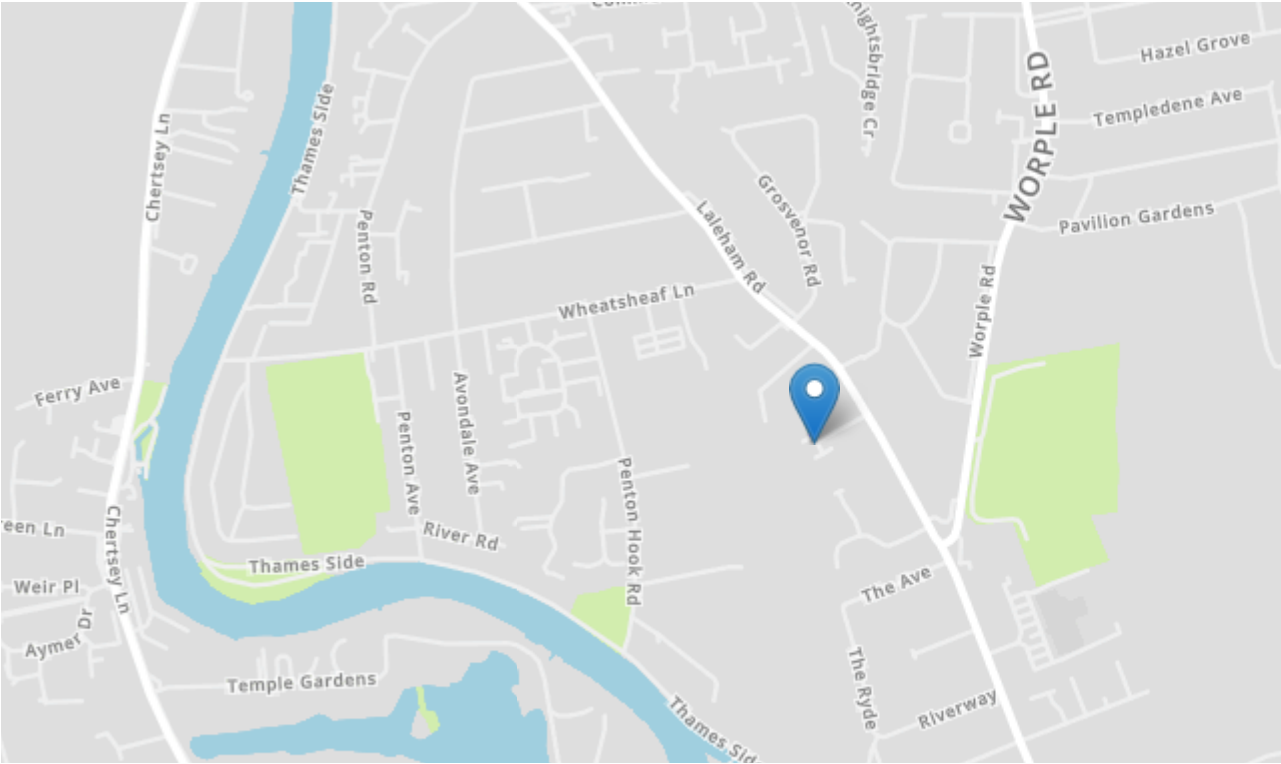


GREGORY BROWN
RESIDENTIAL SALES & LETTINGS



22 Sweeps Ditch Close, Staines-upon-Thames, Surrey. TW18 2RU.

gregory-brown.co.uk



Tenure	Leasehold
Lease Term	To Be Confirmed
Ground Rent	To Be Confirmed
Service Charge	To Be Confirmed
Local Authority	
Council Tax	

We have prepared these property particulars as a general guide to a broad description of the property. They are not intended to constitute part of an offer or contract. We have not carried out a structural survey and the services, appliances and specific fittings have not been tested. All photographs, measurements, floorplans and distances referred to are given as a guide only and should not be relied upon for the purchase of carpets or any other fixtures or fittings. Lease details, service charges and ground rents (where applicable) and council tax are given as a guide only and should be checked and confirmed by your solicitor prior to exchange of contracts. The copyright of all details, photographs and floorplans remain exclusive to Gregory Brown.

