

Total Area: 66.9 m² ... 720 ft²

All measurements are approximate and for display purposes only



Village Mews, Bovington

£295,000

A rare opportunity to purchase a shared freehold two bedroom ground floor apartment, located in the centre of Bovington Village high street, with off road parking for two vehicles. The property is in need of modernisation and has been priced accordingly to reflect this. The accommodation comprises of two double, sitting room/dining room, family bathroom. There is no upper chain

Ground Floor

Communal Entrance Hallway

Staircase leading to the first floor, communal entry phone system.

Entrance Hall

Storage cupboard, radiator, doorway leading to inner lobby.

Sitting Room/Dining Room

With a feature bay window overlooking a private and secluded lawn area. TV point, door from inner hallway and double doors leading to the kitchen area.

Bedroom One

Window to front, radiator, a range of fitted wardrobes.

Bedroom Two

Window overlooking the front garden.

Kitchen

A range of wall and base units in light grey colour, rolled edged work surfaces, a newly installed Viessmann gas central heating boiler, window to side,

Bathroom

A white suite with chrome fittings comprising of a

paneled bath, WC, wash hand basin, extractor fan.

Outside

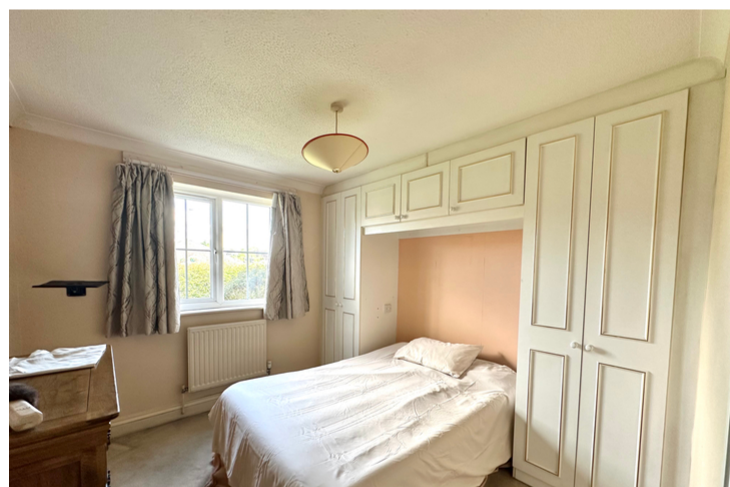
Car Parking and Communal garden

Allocated parking spaces for two vehicles. There is a communal rear garden and front garden.

Share of the freehold/ Service Fees

The property benefits from a one seventh share of the freehold, There is a service and management charge of £140 per month.

www.whitewoodproperties.co.uk



W **W** **WHITEWOOD**
ESTATES
COUNTRY HOMES & VILLAGE PROPERTIES

