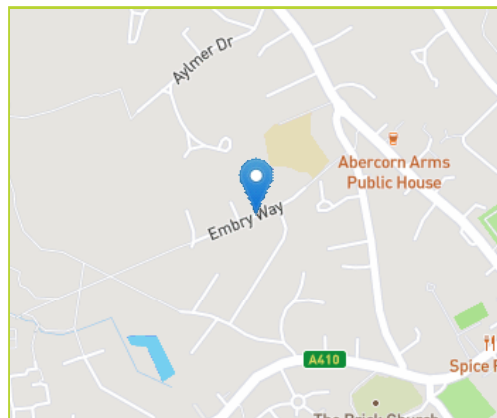


Stanmore's Jubilee Line underground station provides direct access to Docklands and the City of London. Schools, places of worship, recreational facilities (including Stanmore Golf Club) are all well catered for in the surrounding area.

Bentley Priory consists of 66 hectares of countryside open space. The Site is of Special Scientific Interest (SSSI) in particular for its meadow areas. As well as the meadows, the site includes extensive woodlands and two ponds. During the summer, cattle graze the meadows. Bentley Priory is also a haven for bird life and a wide range of plant life. Adjoining the open space is a private Deer Park.



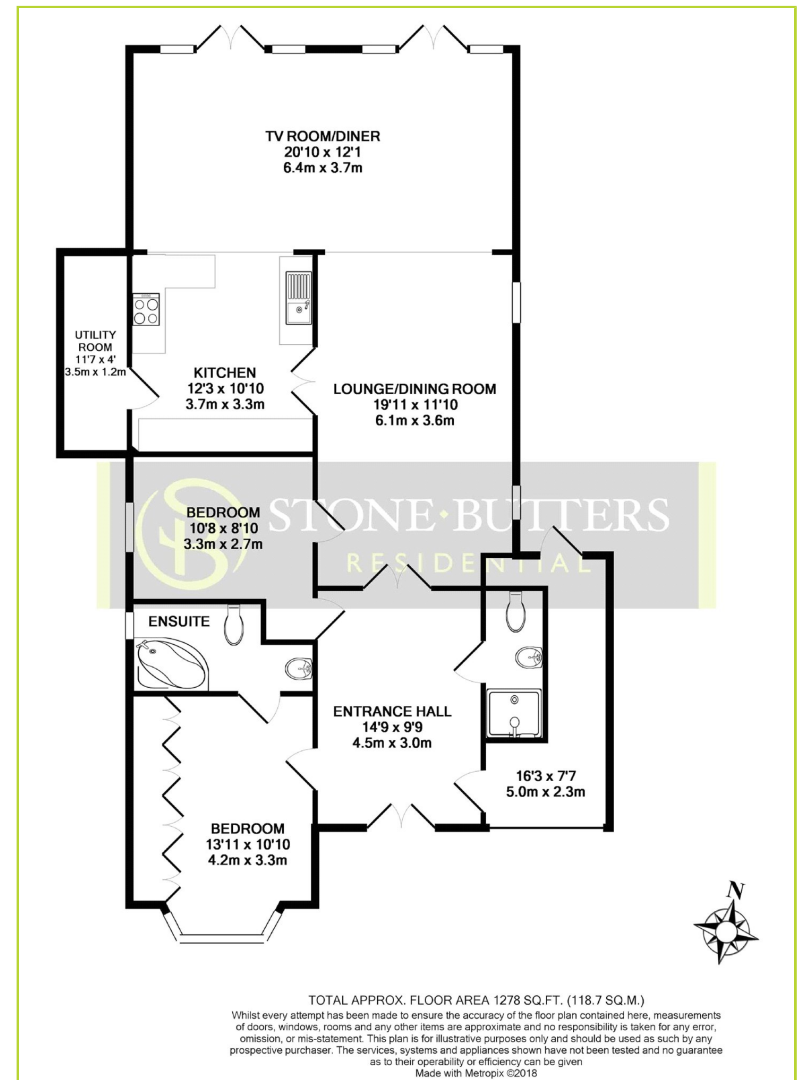
Embry Way, Stanmore

Freehold

A Skilfully Extended 2 Bedroom, 2 Bathroom Detached Bungalow recently refurbished throughout to a high standard and offering spacious living accommodation. Located in this popular turning being close to Stanmore's shopping and transport facilities.

Being bright and airy throughout the bungalows benefits include; off street parking, landscaped garden and utility room. Internal viewing is highly recommended to be fully appreciated.

- Recently Extended & Refurbished
- Two Bedrooms
- Two Bathrooms
- Spacious Living Accommodation
- Modern Fitted Kitchen
- Utility Room
- Off Street Parking
- Split Level Rear Garden
- Bright And Airy Throughout
- Internal Viewing Recommended.



(Floor plans are not to scale and measurements are given for guidance only)

