



DERBYSHIRE



Elm Tree Avenue, Belper, Derbyshire DE56 0NL
£235,000 - Freehold



PROPERTY DESCRIPTION

Located in the popular village of Kilburn, just 2 miles from Belper, is this well-presented three-bedroom semi-detached family home. The property briefly comprises: an entrance hall, a spacious living room, and a modern kitchen/dining room. To the first floor, the landing provides access to three bedrooms and a family bathroom. Externally, the home benefits from landscaped front and rear gardens, as well as a driveway and garage to the side elevation—offering ample off-road parking and storage.

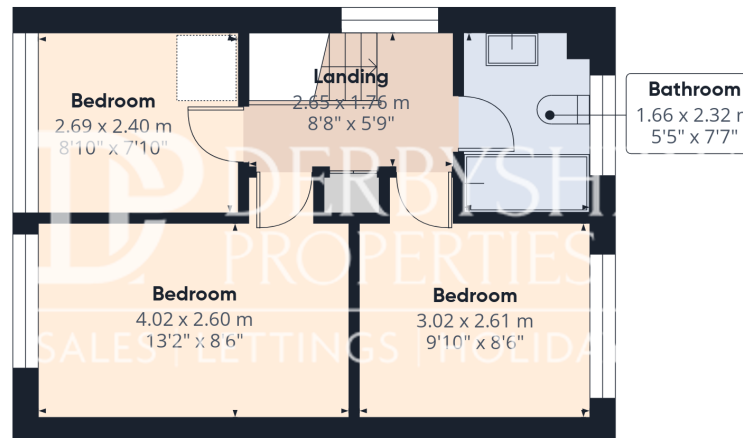
We believe this property will strongly appeal to first-time buyers and small families, and we highly recommend an early internal inspection to fully appreciate what's on offer.

POINTS OF INTEREST

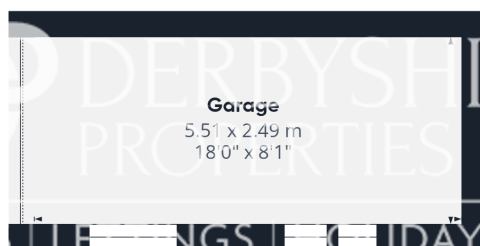
- Semi Detached Home
- 3 Bedrooms
- Open Plan Living
- Front & Rear Gardens
- Driveway & Garage
- Sought After Location
- Ideal Small Family Purchase
- Viewing Recommended
- Council Tax Band B



Ground Floor Building 1



Floor 1 Building 1



Ground Floor Building 2

Approximate total area⁽¹⁾

81 m²

870 ft²

(1) Excluding balconies and terraces

Calculations reference the RICS IPMS 3C standard. Measurements are approximate and not to scale. This floor plan is intended for illustration only.

GIRAFFE360