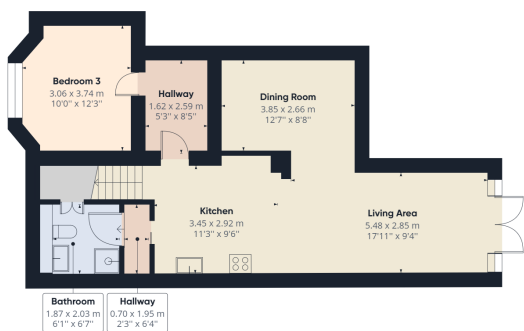




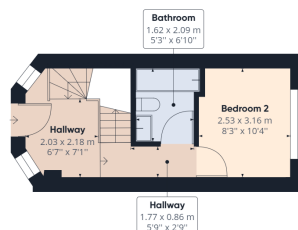
Corringham Road, London, NW11 7BT

£920,000

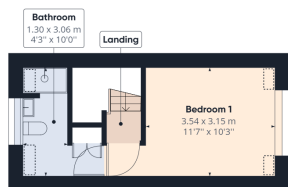
- End of Terrace House
- Three Bathrooms
- Split over 3 floors
- Access to Shared Garden
- Off-Street Parking
- Three Double Bedrooms
- Open Plan Kitchen / Living Room
- Share of Freehold
- Excellent Location



Ground Floor Building 1



Floor 1 Building 1



Floor 2 Building 1

Approximate total area⁽¹⁾

1091.88 ft²
101.44 m²

Reduced headroom

10.25 ft²
0.95 m²

(1) Excluding balconies and terraces

 Reduced headroom (below 1.5m/4.92ft)

While every attempt has been made to ensure accuracy, all measurements are approximate, not to scale. This floor plan is for illustrative purposes only.

GIRAFFE360

