



## 7 Belhaven Terrace, Wishaw, North Lanarkshire, ML2 7AY

Beautifully Presented, Two-Bedroom, Second (Top) Floor Flat

Up to date price and viewing info at [mov8realestate.com/property](https://www.mov8realestate.com/property)

espc rightmove  Zoopla  
find your happy

# Property Description

Beautifully presented, two-bedroom, second (top) floor flat, forming part of an impressive period stone-built terrace. Located in the heart of the town centre of Wishaw, North Lanarkshire.

Comprises a vestibule, hall, an open plan living room/kitchen, two double bedrooms, and a bathroom.

Freshly prepared for the market in light neutral decor, ready-to-move-in.

Highlights include a fitted kitchen with appliances, a modern bathroom, and contemporary flooring throughout. In addition, there is gas central heating, double glazing, and good storage provision including a generous loft space.

A street vernal entrance gives access to an enclosed courtyard to the rear, with a shared drying green and provision for off-street parking.

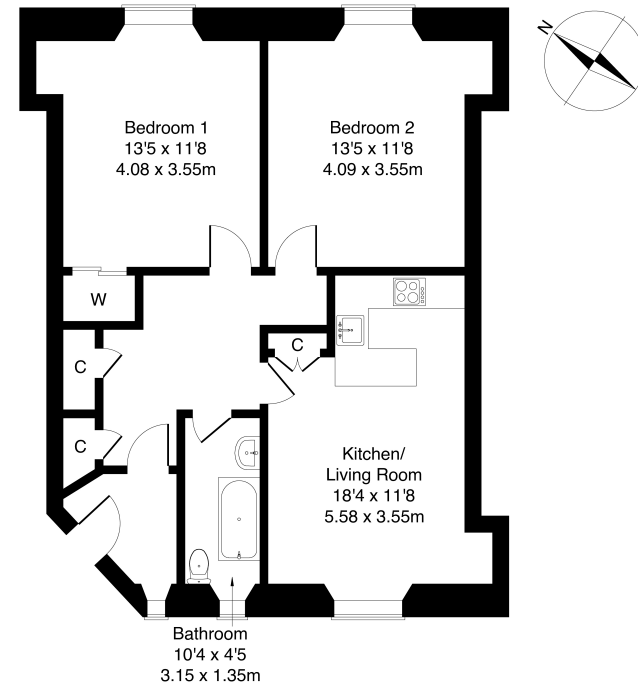
A welcoming entrance vestibule has an entry phone system handset and opens into the hall, affording access throughout the property and features two convenient storage cupboards and a dining table that may be available for inclusion in the sale. Set to the front, an open-plan living room/kitchen features wood effect flooring, light neutral decor, a press with shelves, and a built-in storage cupboard. To the rear of the room, a fitted kitchen includes stone effect worktops, a tiled surround, a sink with a drainer, an integrated oven and gas hob, and a freestanding washer/dryer and fridge; whilst in the hall cupboard, a freestanding freezer may be available for inclusion in the sale.

Set to the rear, two generous double bedrooms are similarly well sized and tastefully finished, with light decor and matching wood effect flooring, with bedroom one also including a built-in wardrobe with mirrored sliding doors and a press with shelves. Completing the accommodation, the bathroom is fitted with a modern three-piece suite including a shower over the bath, tiled splash walls, and contemporary flooring.

**mov<sup>8</sup>** REAL ESTATE  
Estate Agents and Solicitors

## 7 Belhaven Terrace, Wishaw, ML2 7AY

Approximate Gross Internal Area: (775 sq ft - 72 sq m.)



Legal Disclaimer : Floor-plan and measurements are for illustrative guidance only, and not intended to form part of any contract.

# Area Description

Located on the edge of the Clyde Valley, Wishaw is a large town in North Lanarkshire, 15 miles southeast of Glasgow city Centre, and within easy access to the M74 and the M8, making the town a popular location for commuters travelling to both Glasgow and Edinburgh. Local public transportation is available to Motherwell, Hamilton, Glasgow and neighbouring towns, with bus services located outside the property; whilst a train station is within a short walk away providing transport further afield. With a large Lidl and Morrisons superstore, the area also offers the usual

expected everyday amenities, as well as a number of high-street stores, coffee shops, restaurants and pubs. Wishaw also provides a sports centre and its own golf course, whilst further afield the Clyde Walkway and Strathclyde and Chatelherault country parks offer open green spaces and outdoor recreation. Schooling at all levels is well provided for, as well as its own hospital and medical clinics.





## Our Services

-  Free pre-sale property valuations
-  Great value fixed estate agency fees
-  Extensive buyer matching database
-  Purchase and sale conveyancing

## Contact Us

0345 646 0208

[sales@mov8realestate.com](mailto:sales@mov8realestate.com)

[www.mov8.com](http://www.mov8.com)

### Head Office

6 Redheughs Rigg, Edinburgh, EH12 9DQ

### Glasgow Office

77 Renfrew Street, Glasgow, G2 3BZ



Estate Agents and Solicitors

