



## **HOLLY COURT, JOHN HARRISON WAY, LONDON SE10 0BL**

Fantastic one bedroom apartment, enviably positioned within a sought after riverside development. The apartment briefly comprises spacious reception/dining room open plan to the kitchen.

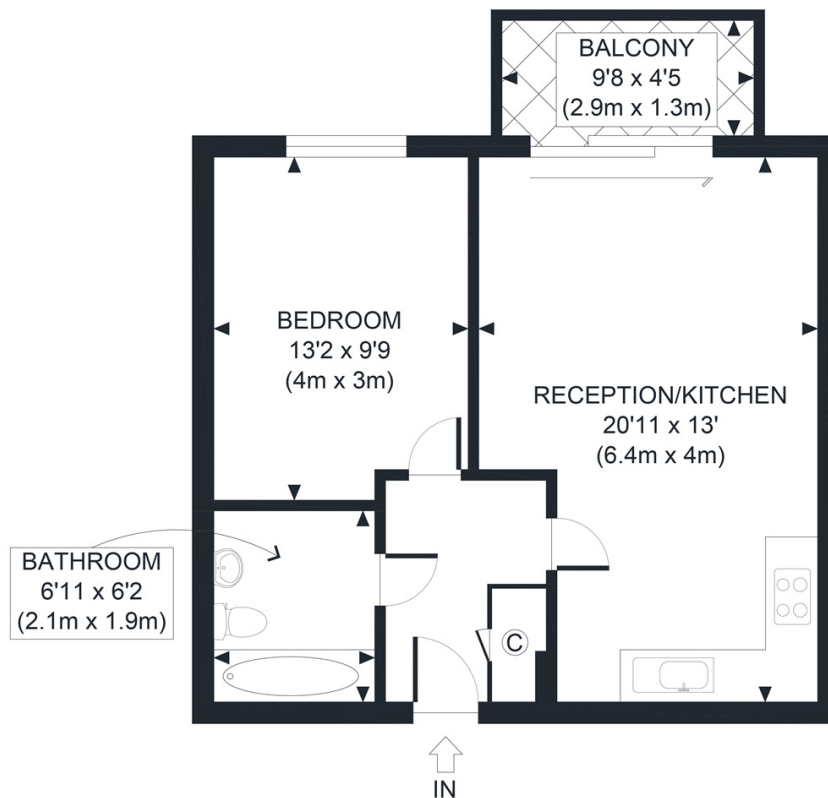
The development is located a short walk from North Greenwich tube station (Jubilee Line), the Emirates Cable Cars and the O2 with the many attractions within, including bars and restaurants. It is also within walking distance to Sainsburys, Aldi, Asda and Ikea. The development is also home to an excellent primary school, nursery and Eco park. Further benefits include secure parking, 24 hour concierge, excellent transport links and located moments from the O2 Arena.

**£1,600  
PCM**

**VIEWING BY APPOINTMENT WITH 1ST AVENUE. CALL: 020 8293 8600**

**313 HOLLY COURT, JOHN  
HARRISON WAY, LONDON  
SE10 0BL**

**£1,600 PCM**



THIRD FLOOR  
GROSS INTERNAL  
FLOOR AREA 485 SQ FT

APPROX. GROSS INTERNAL FLOOR AREA 485 SQ FT / 45 SQM

Disclaimer: Floor plan measurements are approximate and are for illustrative purposes only. While we do not doubt the floor plan accuracy and completeness, you or your advisors should conduct a careful, independent investigation of the property in respect of monetary valuation

Copyright **photoplan360**

**VIEWING BY APPOINTMENT  
WITH 1ST AVENUE.**

**CALL: 020 8293 8600**

**1stavenue**  
Real Estate Services