



- Situated On The Popular Oakwood Hill Development
- Built By Reputable Builders Bloor Homes
- Contemporary Semi Detached House
- Three Bedrooms
- Spacious Living Room & Kitchen/Diner With Utility Area
- En-Suite, Family Bathroom And Downstairs WC
- Generous Rear Garden With Decked Area And Shed
- Driveway Providing Parking

8 Fiske Avenue, Halstead, Essex. CO9 1FZ.

Nestled in the heart of Halstead's sought-after Oakwood Hill Development, built by the reputable Bloor Homes, is this contemporary three-bedroom semi-detached house offering the perfect blend of style, comfort, and convenience.



Property Details.

Room Measurements

Entrance Hall

With access too;

Living Room



4.29m x 3.61m (14' 1" x 11' 10")

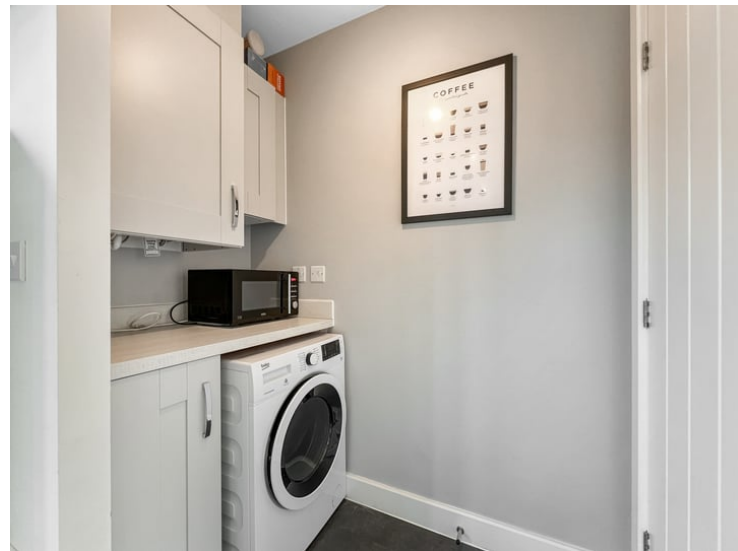
Kitchen/Diner



3.91m x 3.64m (12' 10" x 11' 11")



Utility Area



WC

Landing

Bedroom One



2.90m x 2.69m (9' 6" x 8' 10")

Property Details.

En-Suite



Bathroom



Bedroom Two



3.51m x 2.69m (11' 6" x 8' 10")

Bedroom Three

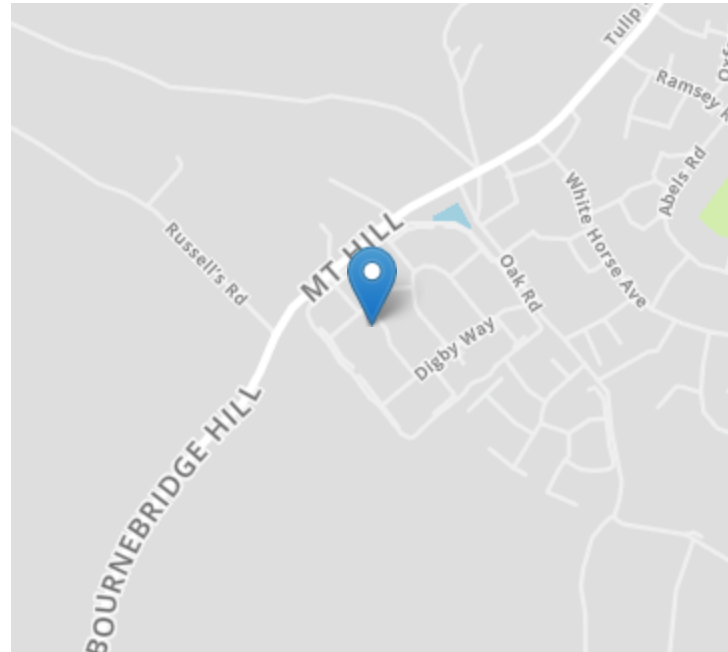


3.51m x 2.01m (11' 6" x 6' 7")

Property Details.

Floorplans

Location



Energy Ratings

We have not carried out a structural survey and the services, appliances and specific fittings have not been tested. All photographs, measurements, floor plans and distances referred to are given as a guide only and should not be relied upon for the purchase of carpets or any other fixtures or fittings. Gardens, roof terraces, balconies and communal gardens as well as tenure and lease details cannot have their accuracy guaranteed for intending purchasers. Lease details, service ground rent (where applicable) are given as a guide only and should be checked and confirmed by your solicitor prior to exchange of contracts.