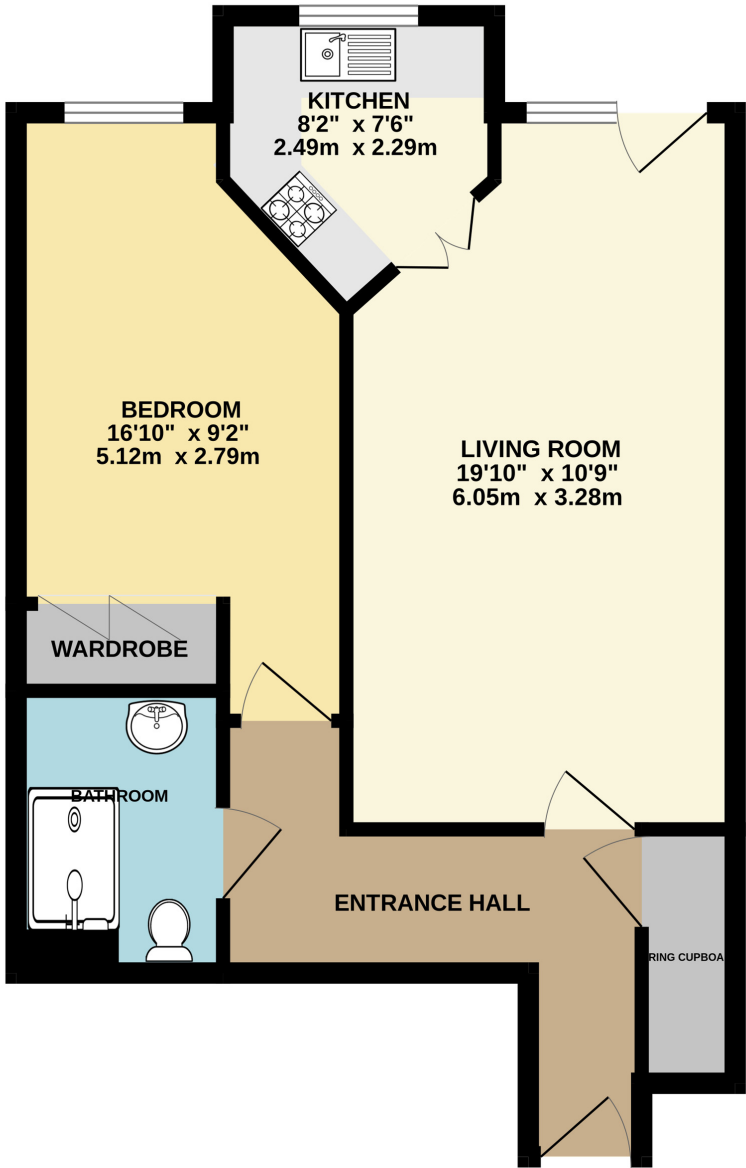


GROUND FLOOR
514 sq.ft. (47.7 sq.m.) approx.



TOTAL FLOOR AREA : 514 sq.ft. (47.7 sq.m.) approx.
Whilst every attempt has been made to ensure the accuracy of the floorplan contained here, measurements of doors, windows, rooms and any other items are approximate and no responsibility is taken for any error, omission or mis-statement. This plan is for illustrative purposes only and should be used as such by any prospective purchaser. The services, systems and appliances shown have not been tested and no guarantee as to their operability or efficiency can be given.
Made with Metropix ©2024



Sheppard Court, Chieveley Close, Tilehurst.

£120,000 Leasehold

Arins Tilehurst - Offered to the market with NO ONWARD CHAIN is this well presented first floor over 60's retirement apartment. The property is tucked away in a desirable location, close to Tilehurst Village, with great access to amenities including a regular bus service, doctors surgery, pharmacy and shops. Further accommodation includes a living room, separate kitchen, and a bathroom. Other features include bay parking, beautifully maintained communal grounds, a communal lounge, a laundry room, and an on site manager.

- Over 60's Retirement Development
- Located at the end of a cul-de-sac
- Assisted Living with Site Manager and Intercom Alarms
- One Bedroom
- First Floor Apartment
- Communal Gardens





Property Description

First Floor

Entrance Hall

Living Room

19' 11" x 10' 9"
(6.07m x 3.28m)

Kitchen

7' 6" x 8' 2" (2.29m x
2.49m)

Bedroom

9' 2" x 16' 10"
(2.79m x 5.13m)

Bathroom

Outside

Communal Garden

Bay Parking

Council Tax Band