



6, Massey Avenue
Northwich CW8 1RF

£320,000

www.westates.co.uk
01606 331784



An extended and well presented semi-detached family home in a sought after location.

- Extended Semi-Detached Home
- Three Reception Rooms
- Modern Kitchen
- Four Bedrooms
- Modern Bathroom
- Good Size Rear Garden
- Car-Port & Three Car Driveway

Description

An extended and all presented, semi-detached family home, located on a popular development. The property provides well proportioned accommodation with gas central heating and PVCu double glazed windows. Comprises: Entrance hall, lounge with wood burning stove, open plan kitchen dining room with modern fitted units and built-in appliances and family room on the ground floor along with four good size bedrooms and bathroom on the first floor. Externally there is a good size rear garden, a covered car-port to the side and there is a triple width driveway to the front.



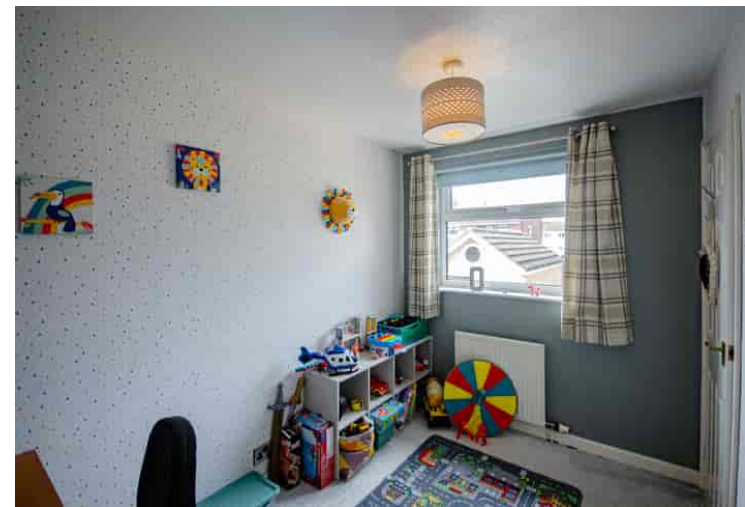
Location

Hartford is a bustling Cheshire village with an excellent range of local facilities including a hub of shops at its centre, offering everything you could want or need. There are three public house's in the village, The Red Lion, The Coachman and Hartford Hall Hotel, in addition there are two wine bars/bistros; Chime, located in the heart of the village and The Hart of Hartford, which is located on School Lane. Two railway stations serve the village with the West Coast Main Line service running through Hartford, enabling access to London within two hours. Trains to Manchester and Chester run from Greenbank station. The A556 and A49 easily facilitate access to the region's major road network with Manchester and Liverpool airports both within 20 miles. The well regarded Grange private school is less than a mile away and both Hartford High and St Nicholas Catholic High School are within walking distance as are the four village primary schools; Hartford Primary School, St Wilfrid's Catholic Primary School, Hartford Manor Community School and the private Grange primary School. Sir John Deanes Six Form College is also within a mile. Nearby Northwich caters for a more comprehensive range of amenities, including leading supermarkets with Waitrose, Sainsbury's and Tesco all represented.

Tenure

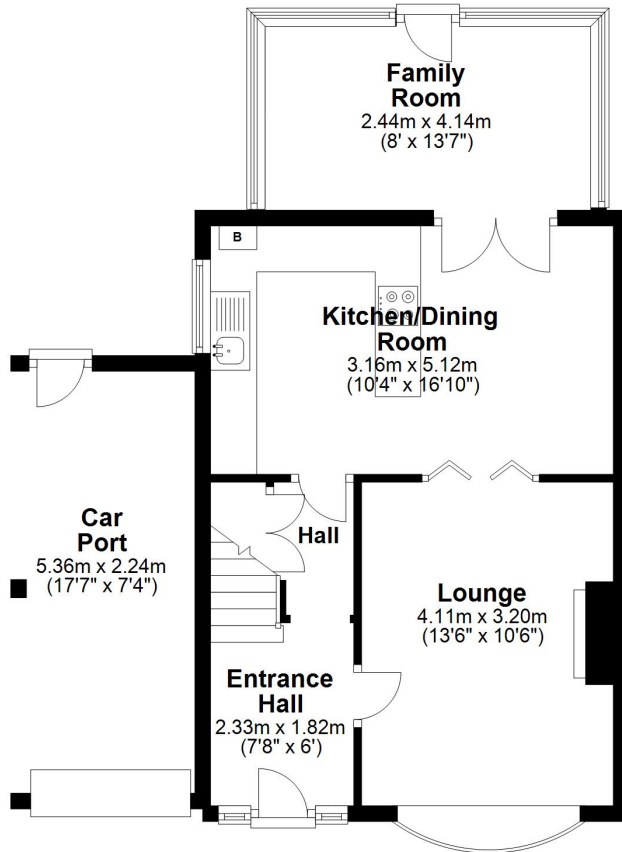
FREEHOLD

EPC Rating:



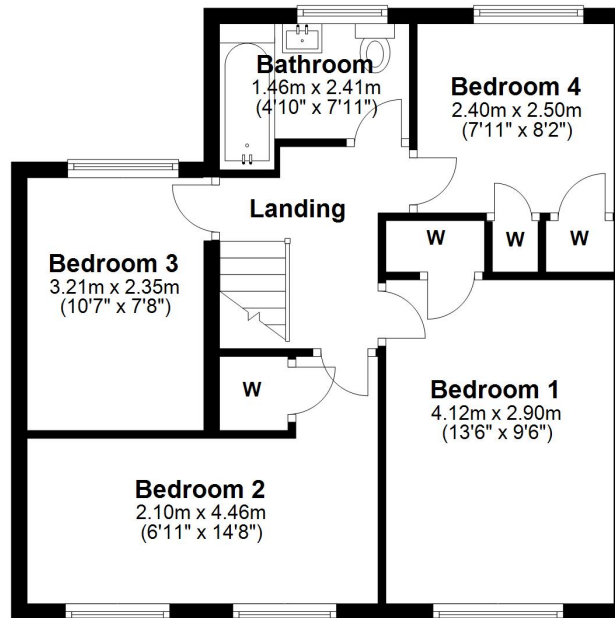
Ground Floor

Approx. 61.1 sq. metres (658.0 sq. feet)



First Floor

Approx. 50.2 sq. metres (540.5 sq. feet)



Total area: approx. 111.3 sq. metres (1198.5 sq. feet)



These particulars, whilst believed to be accurate are set out as a general outline only for guidance and do not constitute any part of an offer or contract. Intending purchasers should not rely on them as statements of representation of fact, but must satisfy themselves by inspection or otherwise as to their accuracy. All measurements quoted are approximate. We are unable to confirm the working order of any fixtures and fittings including appliances that are included in these particulars. No person in this firm's employment has the authority to make or give any representation or warranty in respect of the property.