



Day & Co
ESTATE AGENTS

28 Cavendish Street
Keighley
BD21 3RG



428 Skipton Road, Keighley,
West Yorkshire, BD20 6DT

£220,000

T: 01535 664609

W: www.dayandcoestateagents.co.uk

E: keighley@dayandcoestateagents.co.uk

- SPACIOUS TERRACE HOUSE
- WELL PRESENTED ACCOMMODATION
- INTEGRAL GARAGE, FRONT GARDEN

- FOUR BEDROOMS
- BATHROOM & SHOWER ROOM
- EPC RATING D

SUMMARY

** SPACIOUS MID TERRACE PROPERTY, FOUR BEDROOMS, BATHROOM & SHOWER ROOM, INTERGRAL GARAGE, FRONT GARDEN, VIEWS TO REAR, INTERNAL VIEWING RECOMMENDED, EPC RATING D **

FULL DESCRIPTION

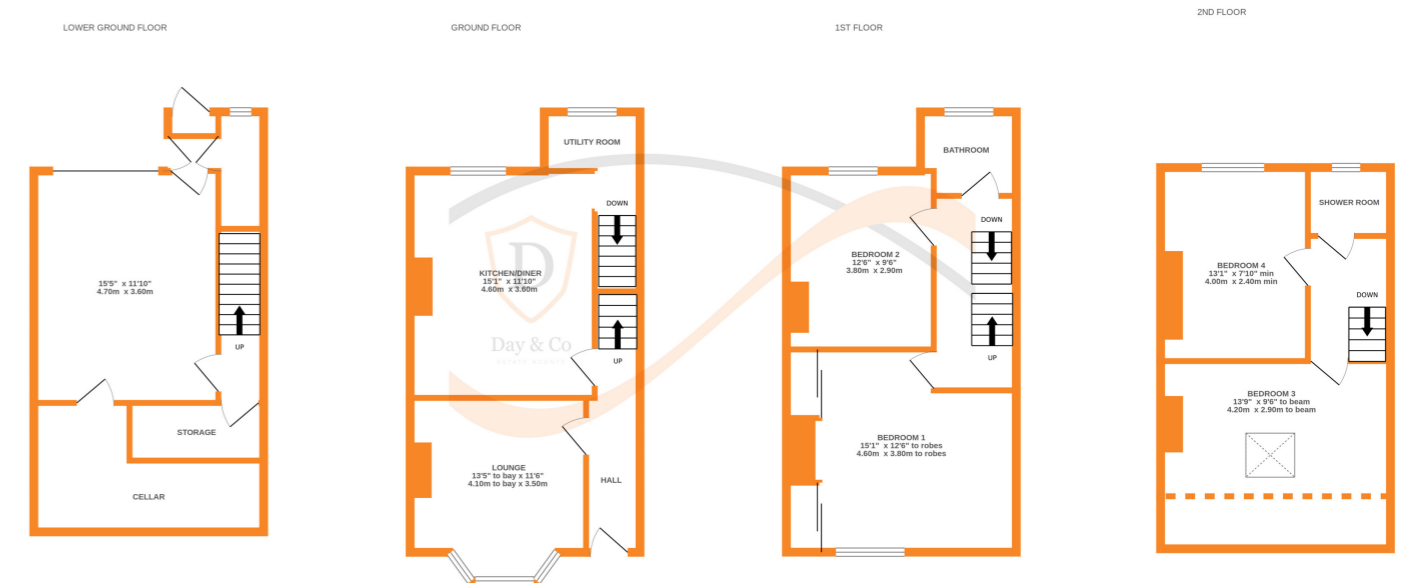
Viewing is highly recommended to fully appreciate this well presented four bedroom through terrace, offering spacious accommodation in the popular location of Utley, with far reaching views to the rear. This property has been improved by its current owners with the accommodation briefly comprising - Ground Floor - Entrance Hallway, Lounge has double glazed bay window to the front and a wood burning stove, Dining Kitchen has a range of wall and base units, vertical radiator, worktops, sink, Utility Room with stairs leading down to the lower level. Pantry, Integral garage, cellar. First Floor - Landing, Two Bedrooms, Bathroom with three piece modern suite in white comprising of a bath with shower over and screen, w.c., wash hand basin. Upper Floor - Landing, Two Bedrooms the rear having a dormer window, Shower Room with modern suite comprising of a shower, w.c., wash hand basin.

Gas central heating and double glazing.

Outside - Front patio garden, Block paved drive to rear providing parking and giving access to the under house garage.

EPC Rating D

Any floor plans are for guidance and illustrative purposes only. While we strive for accuracy, we cannot guarantee the precise layout, dimensions, or details shown. Any measurements or boundaries should be verified through the title deeds. We accept no liability for any loss or damage arising from reliance on this information.



Whilst every attempt has been made to ensure the accuracy of the floorplan contained here, measurements of doors, windows, rooms and any other items are approximate and no responsibility is taken for any error, omission or mis-statement. This plan is for illustrative purposes only and should be used as such by any prospective purchaser. The services, systems and appliances shown have not been tested and no guarantee as to their operability or efficiency can be given.
Made with Metropix ©2026