

SOLD
STC



40 Kingston Road, Carlton-in-Lindrick, Worksop, Nottinghamshire S81 9HF

£160,000 - Freehold



78, Bridge Street, Worksop, S80 1JA 01909 509001 info@bartropanddilks.co.uk

PROPERTY SUMMARY

Of possible interest for first time buyers is this immaculate, much improved three bedroom extended semi detached home that has gas central heating and uPVC double glazed windows. Having a high standard of fixtures and fittings throughout, the accommodation in brief comprises of; entrance hallway, lounge/dining room, extended sitting room with door to the garden, stunning fitted modern breakfast kitchen with integrated appliances. On the first floor; landing, three bedrooms and white fitted bathroom suite. Outside; low maintenance front garden, rear garden with Porcelain patio, driveway and garage.

POINTS OF INTEREST

- *Viewing Highly Recommended*
- *High Specification Throughout*
- *Of Interest FTB's*
- *Three Bedroom*
- *Semi Detached*
- *GFCH & uPVC DG*
- *Extended Accommodation*
- *Two Reception Rooms*
- *Drive and Garage*
- *Attractive Rear Garden*



ROOM DESCRIPTIONS

Ground Floor

Entrance Hallway

With entrance door, stairs to the first floor, central heating radiator.

W.C

With a low flush w.c, wash hand basin, tiling, central heating radiator, side facing window.

Lounge/Dining Room 5.83m x 3.01m (19' 2" x 9' 11")

With a front facing window, sliding patio doors to the sitting room, central heating radiator.

Sitting Room 3.67m x 2.47m (12' 0" x 8' 1")

With a central heating radiator, side facing French door.

Kitchen 3.39m x 2.94m (11' 1" x 9' 8")

With excellent fitted modern wall and base units, worksurfaces, bowl and half sink unit with mixer tap, breakfast bar area, electric hob with extractor, separate electric double oven, plumbing for an automatic washing machine, central heating radiator, rear facing window.

First Floor

Landing

With a storage cupboard housing the wall mounted boiler.

Bedroom One 3.54m x 3.14m (11' 7" x 10' 4")

With a storage cupboard, front facing window, central heating radiator.

Bedroom Two 4.19m x 2.71m (13' 9" x 8' 11")

With a rear facing window, central heating radiator.

Bedroom Three 3.33m x 1.99m (10' 11" x 6' 6")

With a front facing window, central heating radiator.

Bathroom

White suite with panelled bath and mains shower above, wash hand basin, low flush w.c, tiling to splashback, central heating radiator, rear facing window.

Outside

Gardens

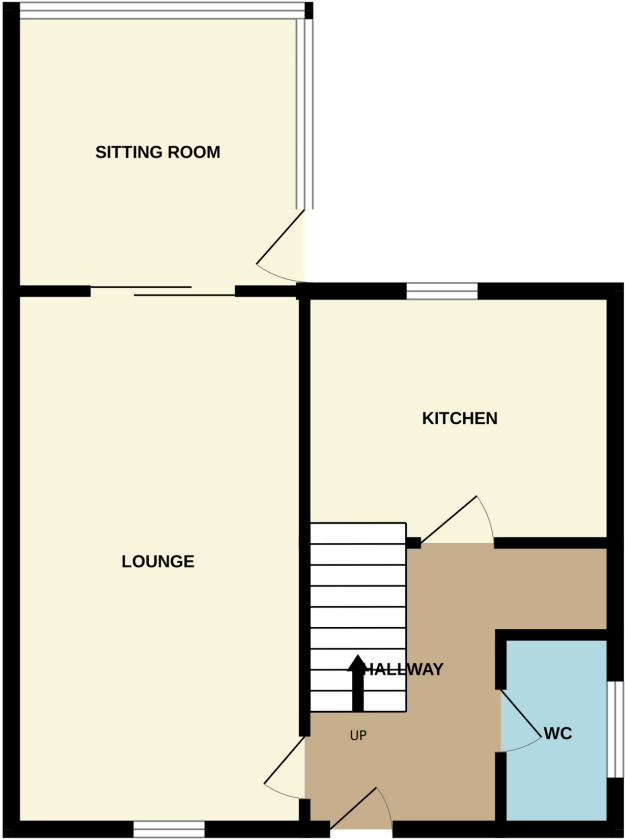
Low maintenance front garden. The rear with extensive patio area lawn.

Driveway

Part shared.

Garage

GROUND FLOOR



1ST FLOOR

