

Merriman Road

Street, BA16 0JB

COOPER
AND
TANNER



Offers Over £290,000 Freehold

This beautifully presented three-bedroom end-of-terrace home is located in a highly sought-after area of Street. Boasting off-road parking and a generously sized garden, it offers the perfect setting for family living.

Merriman Road Street BA16 0JB

 3  1  1 EPC D

Offers Over £290,000 Freehold

ACCOMMODATION:

As you step through the main entrance, you are greeted by an inviting hallway, with stairs leading to the first-floor landing. The hallway provides access to the downstairs cloakroom with WC, both the front sitting room and the heart of the home — the expansive kitchen/dining room. The front sitting room is a comfortable, well-proportioned space, featuring a large window that allows an abundance of natural light to flood in, creating a bright and welcoming atmosphere. The kitchen/dining room is a true highlight, offering both space and style. The newly fitted kitchen includes integrated appliances such as a fridge and dishwasher, as well as room for a range cooker. The composite sink, with a sleek mixer tap, is complemented by a side aspect window that enhances the light-filled ambience. The dining area provides ample room for a large table and chairs, making it the ideal spot for family gatherings. Adding to the charm, the dining area is warmed by a log-burning stove, and French doors open directly onto the rear garden, blurring the lines between indoors and outdoors. At the rear of the property, a handy store/utility room provides additional storage space and practical utility, perfect for everyday needs.

Upstairs, the first floor is home to three well-sized bedrooms: two generous doubles and a comfortable single. The family bathroom offers a bath with a shower over, hand wash basin, and WC, all finished to a high standard. This home perfectly balances modern convenience with inviting family spaces.

OUTSIDE:

To the front of the property, you'll find off-road parking for two vehicles, with convenient access to the side leading to a detached single garage at the rear. The spacious rear garden is a fantastic feature, offering a perfect blend of lush lawn and a well-laid patio area, ideal for family relaxation, outdoor dining, and entertaining. The property is also ideally located near Merriman Park, providing a wonderful green space for young families to enjoy, with ample room for children to play and for leisurely outdoor activities.

SERVICES:

Mains gas, electric, water and drainage are connected, and gas central heating is installed. The property is currently banded C for council tax, within Somerset Council. Ofcom's service checker states that internal mobile coverage is likely with two major providers, whilst Ultrafast broadband is available in the area.

LOCATION:

Located close to the picturesque Merriman Park and within a very short walk of the High Street. Shoppers enjoy the added bonus of Clarks Village Factory Outlets and there is a choice of five supermarkets within a short drive. Quality secondary schooling is available at the renowned Millfield Senior School, Crispin School and Strode College whilst Hindhayes primary school is also a short walk away. Street is well served by doctors and dentists, has indoor and outdoor swimming pools, sports and fitness clubs and a popular Theatre/Cinema. The town also has a fabulous variety of pubs and restaurants to choose from.

VIEWING ARRANGEMENTS:

Strictly through prior arrangement with Cooper and Tanner on 01458 840416. If arriving early, please wait outside to be greeted by a member of our team.





Merriman Road, Street, BA16

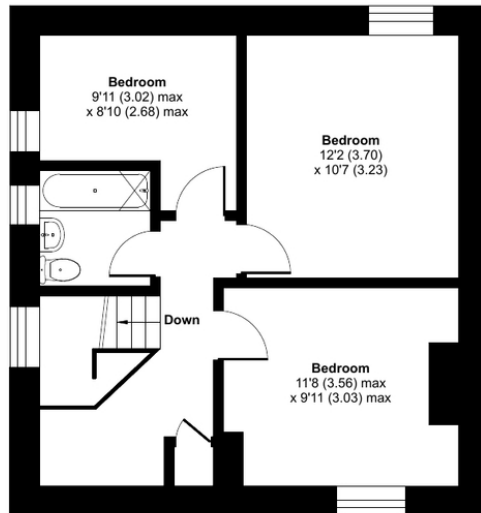
Approximate Area = 956 sq ft / 88.8 sq m

Garage = 133 sq ft / 12.3 sq m

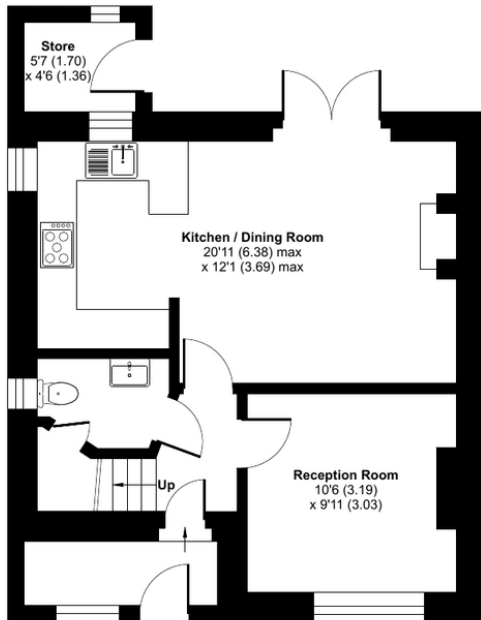
Outbuilding = 25 sq ft / 2.3 sq m

Total = 1114 sq ft / 103.4 sq m

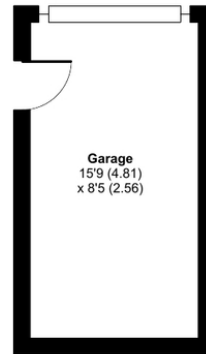
For identification only - Not to scale



FIRST FLOOR



GROUND FLOOR



Floor plan produced in accordance with RICS Property Measurement 2nd Edition, Incorporating International Property Measurement Standards (IPMS2 Residential). © nichcom 2025. Produced for Cooper and Tanner. REF: 1236870

STREET OFFICE

Telephone 01458 840416

86, High Street, Street, Somerset BA16 0EN

street@cooperandtanner.co.uk

COOPER
AND
TANNER

Important Notice: These particulars are set out as a general outline only for the guidance of intended purchasers and do not constitute, nor constitute part of, an offer or contract. All descriptions, dimensions, reference to condition and necessary permissions for use and occupation, warranties and other details are given without responsibility and any intending purchasers should not rely on the same as statements or representations of fact but must satisfy themselves by inspection or otherwise as to the correctness of each of them.



RICS

OnTheMarket