



One Bedroom Apartment  
Corys Road, Rochester, Kent, ME1 1GS

£1,400 pcm  
Leasehold

# Corys Road, Rochester, Kent, ME1 1GS

£1,400 pcm

Leasehold

## Description

A modern and spacious one-bedroom apartment situated on the third floor with lift access, offering stunning views over the River Medway. The property boasts ample storage space, and is bright and airy, featuring a contemporary design and decorated to a high standard throughout. The spacious bedroom includes a built-in wardrobe, providing excellent storage space. The modern kitchen is well-equipped with some fitted appliances, including a fridge freezer, dishwasher and a free standing washing machine, adding convenience to everyday living. Additional benefits include ample storage options, allocated parking for one car, and access to multiple visitors' bays. Ideally located, the apartment is approximately 0.2 miles (distance according to Google Maps) from Rochester Train Station, making it perfect for commuters, and just 0.4 miles (distance according to Google Maps) from Rochester High Street. Rochester is brimming with cultural and historical attractions and World famous for its links with Charles Dickens. Today this ancient town is home to independent shops, stylish restaurants, and elegant wine bars. With the North Downs and London in easy reach. This apartment is ideal for those seeking contemporary living with convenience. Don't miss out on this fantastic opportunity, call today to schedule your viewing!

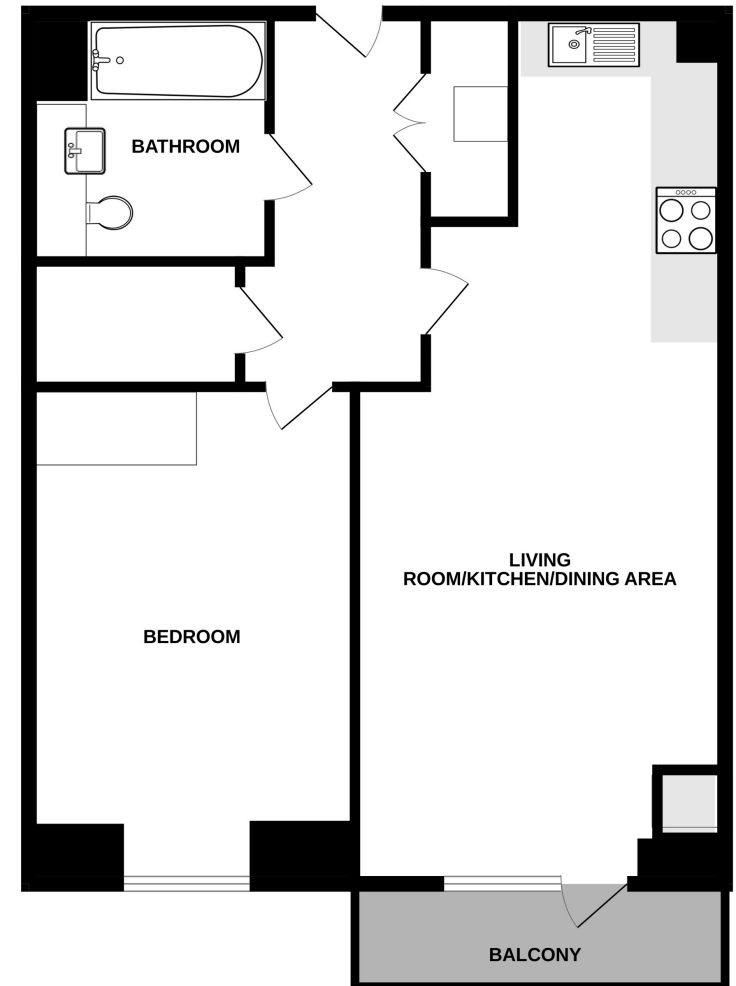
## Key Features

- Modern One Bedroom Apartment
- Spacious Bedroom with fitted Wardrobe and River Views
- Contemporary Family Bathroom
- Open Plan Kitchen/Diner/Lounge
- Balcony with River Views
- Close Proximity to Rochester Train Station
- Allocated parking for one car and Visitor Bays
- Close Proximity to Historic Rochester High Street

## Local Area

Historic Rochester offers a variety of historic buildings including Rochester Castle and Cathedral. The area also offers a variety of restaurants, coffee shops and bars. There is a selection of schools in the area including Rochester Grammar for girls and Sir Joseph Williamson Mathematical for boys, along with further secondary and Primary schools near by. Rochester is ideally located for easy access to the M2 and A2 motorways.

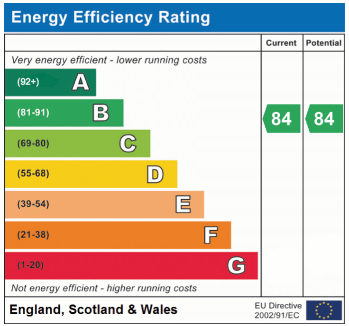
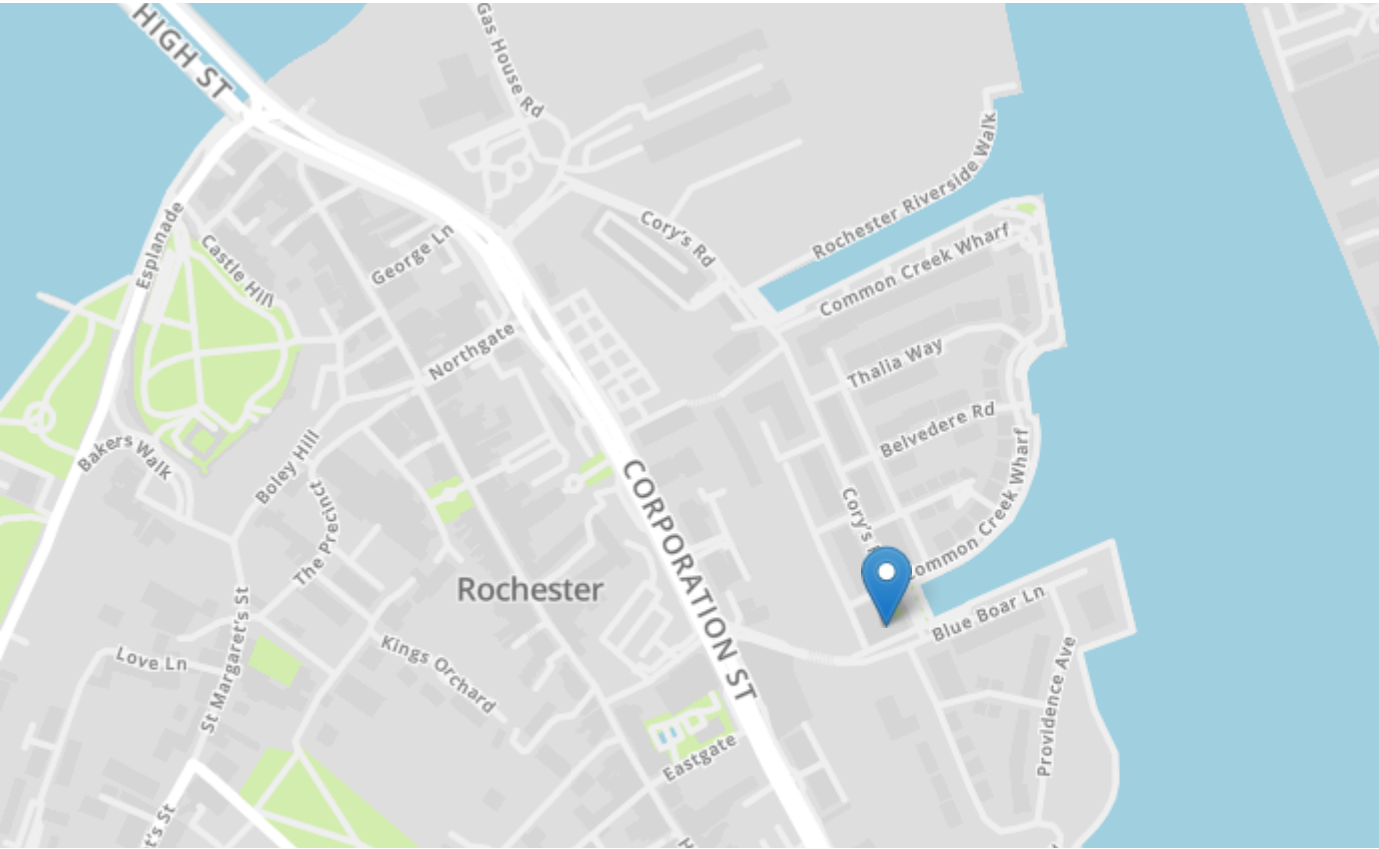
APARTMENT





**Property Location**

Corys Road, Rochester, Kent, ME1 1GS



<b>Tenure</b>	Leasehold
<b>Lease Term</b>	N/A
<b>Ground Rent</b>	N/A
<b>Service Charge</b>	N/A
<b>Local Authority</b>	Medway Council
<b>Council Tax</b>	Band C

**haus Estate Agents**

26, London Road  
 Gillingham  
 Kent  
 ME8 6YX  
 Tel: 01634 848883 Email:  
 hello@hausestateagents.co.uk

**Agent Notes**  
 These particulars do not form part of an offer or contract and must not be relied upon as statements or representation of fact. The seller does not make or give nor do our employees or haus Estate Agents have authority to make or give any representation or warranty to the property. It should not be assumed that the property has all necessary planning, building regulation or other consents and we have not tested any services, equipment, or facilities. All photographs, measurements, floorplans and distances referred to are given as a guide only and should not be relied upon for the purchase of carpets or any other fixtures or fittings. References to tenure, service charges and ground rent (where applicable) as well as council tax are based on information supplied by the seller. The Buyer should verify all information themselves by inspection or otherwise prior to a legal commitment to purchase. The copyright of all details, photographs and floorplans remains exclusive to haus Estate Agents. If you require clarification or further information on any points, please contact us, especially if you are travelling some distance to view.