

FOR SALE

Winslow Road,
Hammersmith, W6

Flat
Riverside

£700,000 lh

2  1  1 

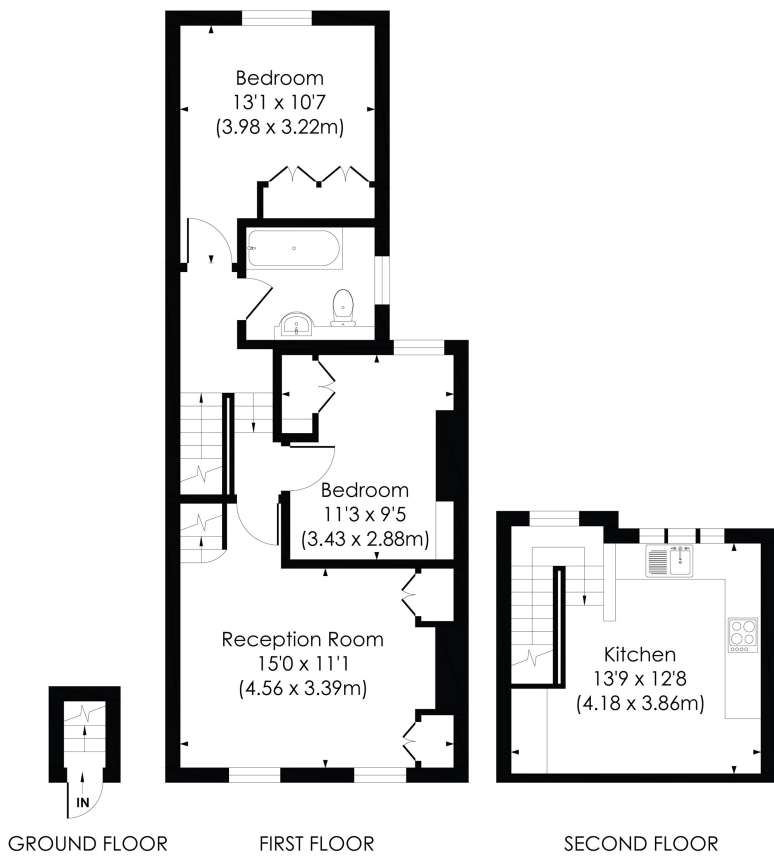


**horton
andgarton**

SALES / LETTINGS / PROPERTY MANAGEMENT

hortonandgarton.co.uk | Sales 020 8819 0510 | Lettings 020 8819 0511
172 King Street, Hammersmith, W6 0QU





Split level maisonette | Two bedrooms - One bathroom |
718 Sq' – 66.70 SqM | Superbly presented | EPC rating
D | Riverside



hortonandgarton.co.uk
Sales 020 8819 0510
Lettings 020 8819 0511

172 King Street, Hammersmith, W6 0QU



© Pixangle Property Marketing Ltd. info@pixangle.com Tel: 0208 870 2118
This floor plan has been prepared for the purpose of illustration only in accordance with the latest RICS code of measuring practice and is not to scale. All measurements and areas are approximate and whilst every effort has been made to ensure the accuracy of the plan contained here, no responsibility is taken for any error, omission or misstatement.

WINSLOW ROAD, W6
Approx. Gross Internal Floor Area
718 Sq. ft/66.70 Sq. m