

TO LET

Hazledene Road,
Grove Park, W4

Terraced House
Grove Park

£795 p/w

3  2  1 

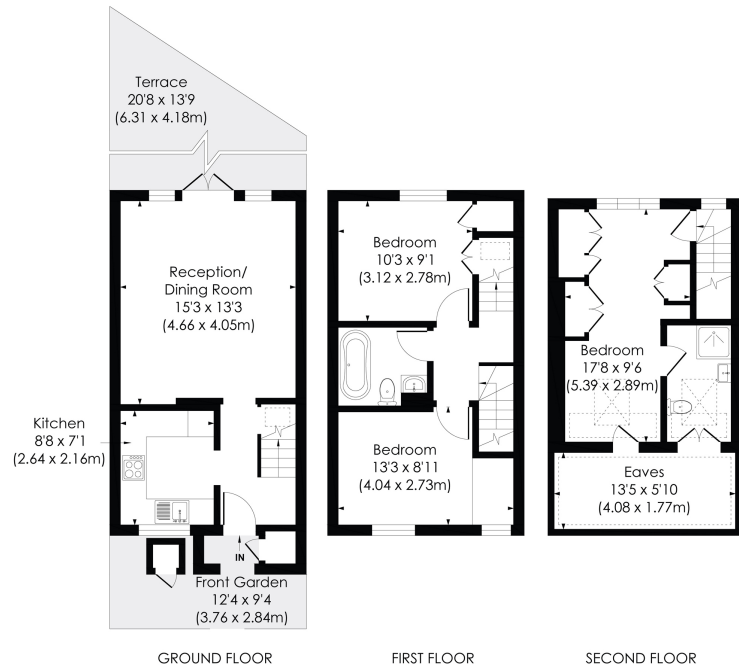


**horton
andgarton**

SALES / LETTINGS / PROPERTY MANAGEMENT

hortonandgarton.co.uk | Sales 020 8819 0510 | Lettings 020 8819 0511
172 King Street, Hammersmith, W6 0QU





HAZLEDENE ROAD, W4

Approx. Gross Internal Floor Area

971 Sq' / 90.18 SqM (Including Eaves)

886 Sq' / 82.34 SqM (Excluding Eaves)

© Pixangle Property Marketing Ltd. info@pixangle.com Tel: 0208 870 2118

This floor plan has been prepared for the purpose of illustration only in accordance with the latest RICS code of measuring practice and is not to scale. All measurements and areas are approximate and whilst every effort has been made to ensure the accuracy of the plan contained here, no responsibility is taken for any error, omission or misstatement.



Three double bedroom house | Two bathrooms | South facing garden | Modern finish throughout | EPC rating C | Grove Park



hortonandgarton.co.uk
 Sales 020 8819 0510
 Lettings 020 8819 0511

172 King Street, Hammersmith, W6 0QU