

Total area: approx. 63.9 sq. metres (687.9 sq. feet)

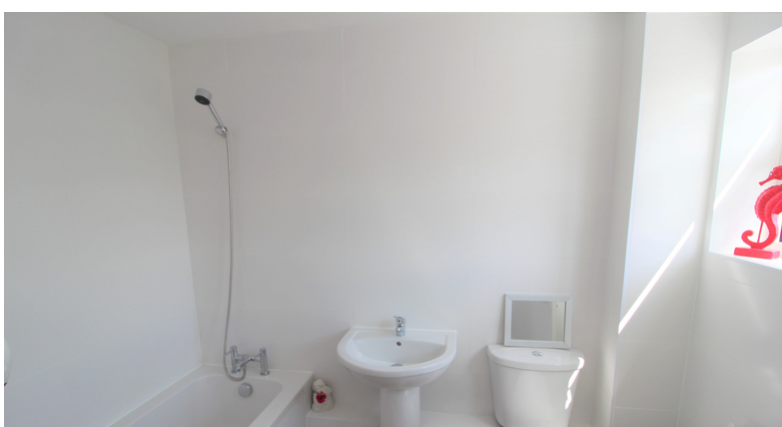
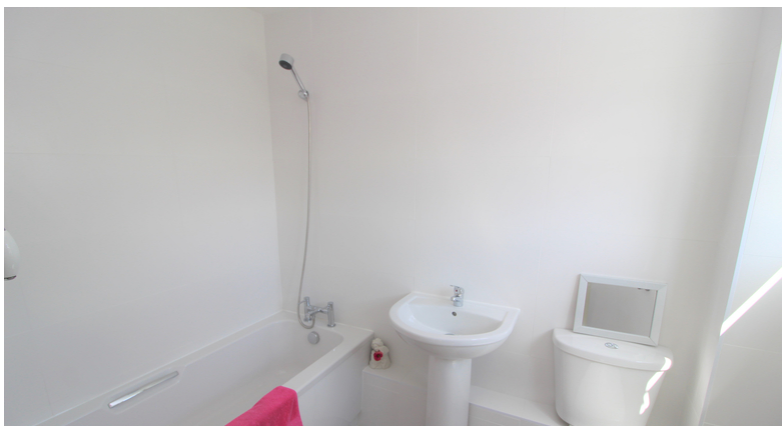
All measurements shown are approximate and for guidance only. Garages and workshops are not included in any gross floor areas unless integral to the main building where they will be included. Plan produced using Planity.





Offered with vacant possession is this spacious and recently refurbished two bedroomed first floor maisonette. The property is situated at the end of a cul de sac with playing fields to the rear and also boasts a single garage and parking space along with its own private garden.

Hitchin town provides a broad range of shops and a regular traditional market, together with a good selection of restaurants, bars and pubs within its historic centre. The town also provides a swimming centre, theatres and a library, whilst the commuter is served by the main line railway station (Kings Cross - 30 minutes) and direct links to the A1(M).



- Private Garden
- Spacious Accommodation
- No Upward Chain
- Views over Playing Fields
- Refurbished Throughout
- Two Bedrooms
- Single Garage and Driveway
- Cul-de Sac Location
- New Lease