

34 Ashbourne Rise, Orpington, Kent, BR6 9PZ

Property Images

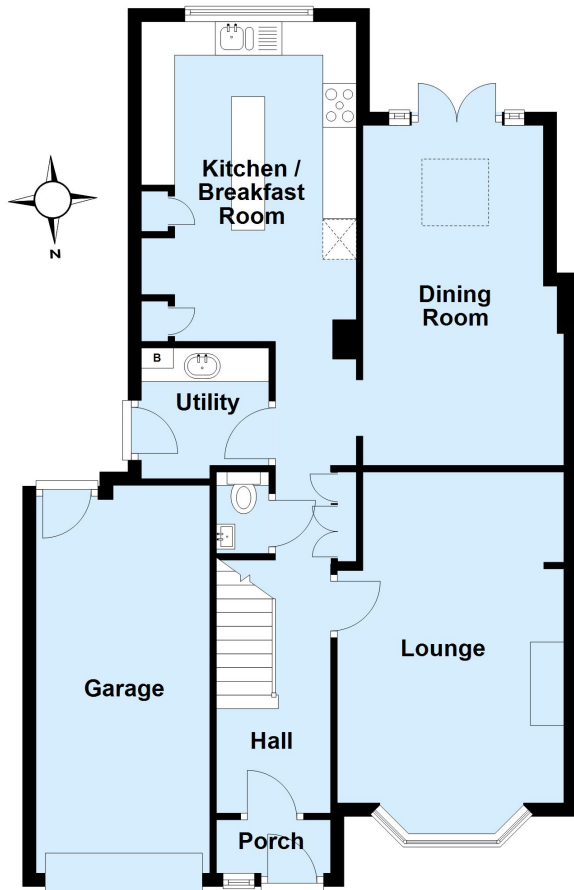






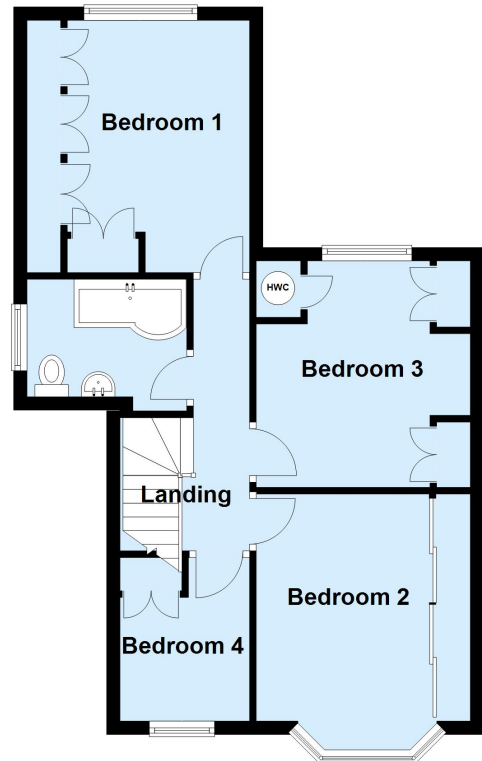
Ground Floor

Approx. 80.7 sq. metres (869.1 sq. feet)



First Floor

Approx. 51.3 sq. metres (551.9 sq. feet)



Total area: approx. 132.0 sq. metres (1421.0 sq. feet)

This plan is for general layout guidance and may not be to scale.
Plan produced using PlanUp.